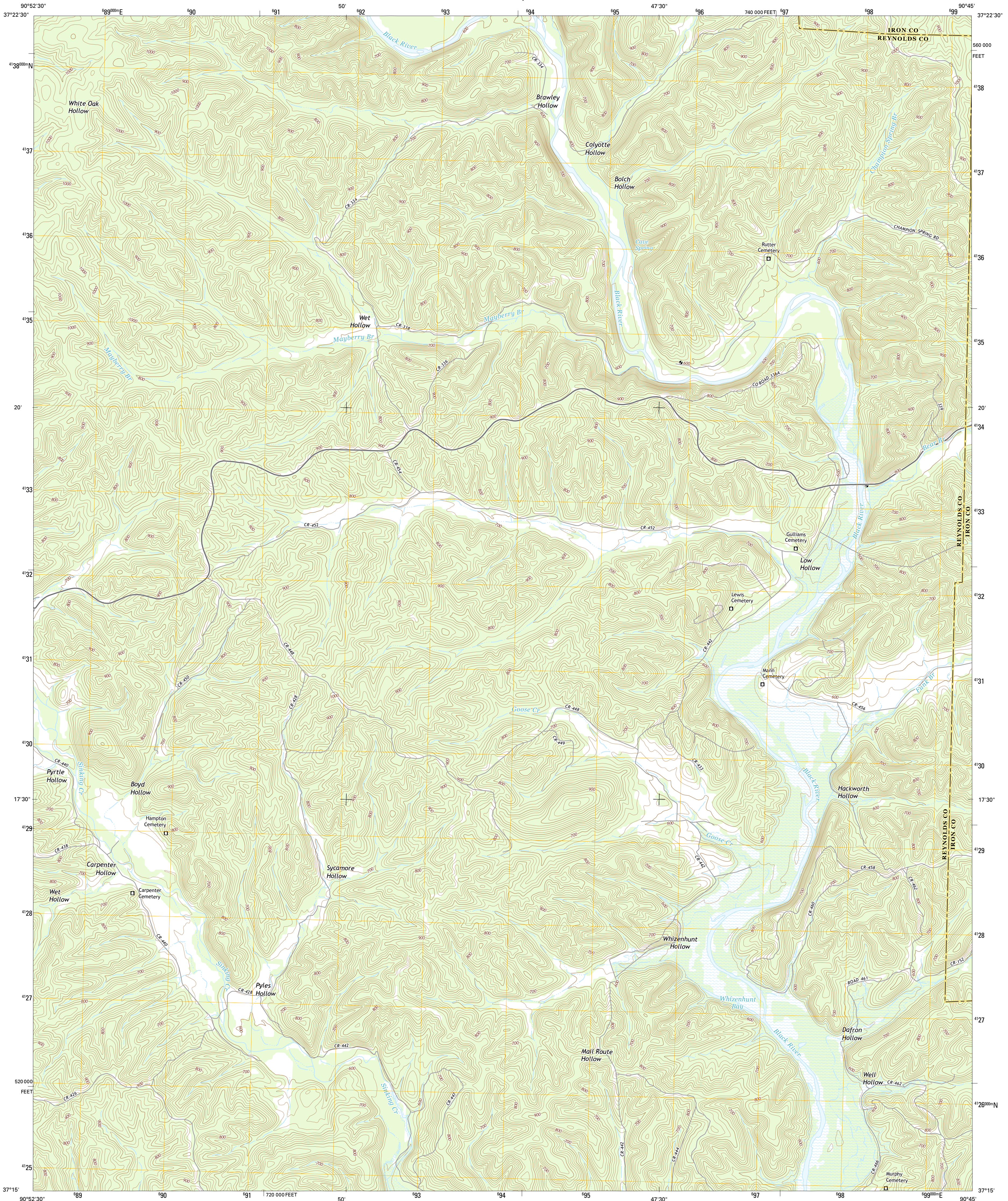




U.S. DEPARTMENT OF THE INTERIOR  
U.S. GEOLOGICAL SURVEY



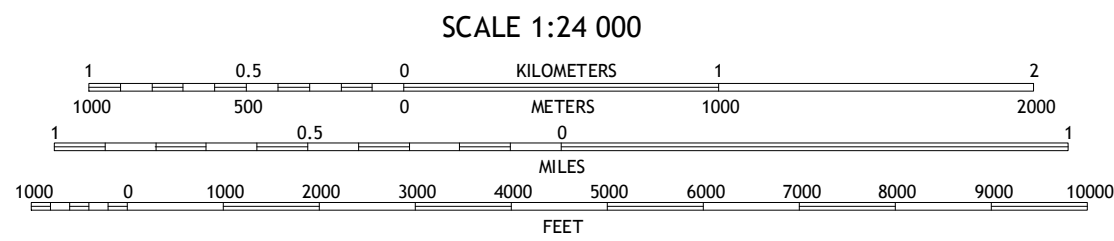
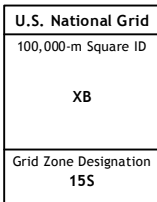
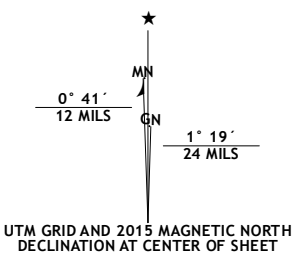
LESTERVILLE SE QUADRANGLE  
MISSOURI  
7.5-MINUTE SERIES



Produced by the United States Geological Survey  
North American Datum of 1983 (NAD83)  
World Geodetic System of 1984 (WGS84). Projection and  
1,000-meter grid: Universal Transverse Mercator, Zone 15S  
10,000-foot ticks: Missouri Coordinate System of 1983 (east  
zone)

This map is not a legal document. Boundaries may be  
generalized for this map scale. Private lands within government  
reservations may not be shown. Obtain permission before  
entering private lands.

Imagery.....NAIP, June 2012  
Roads.....HERE, ©2013  
Names.....National Hydrography Dataset, 2012  
Contours.....National Elevation Dataset, 2002  
Boundaries.....Multiple sources; see metadata file 1972 - 2014  
Public Land Survey System.....BLM, 2011



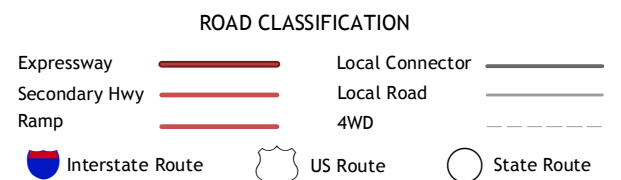
CONTOUR INTERVAL 20 FEET  
NORTH AMERICAN VERTICAL DATUM OF 1988  
This map was produced to conform with the  
National Geospatial Program US Topo Product Standard, 2011.  
A metadata file associated with this product is draft version 0.6.18



1	2	3
4	5	6
7	8	9

ADJOINING QUADRANGLES

1 Lesterville  
2 Lesterville  
3 Glover  
4 Redford  
5 Des Arc  
6 Ellington  
7 Clearwater Dam  
8 Piedmont



LESTERVILLE SE, MO  
2015

