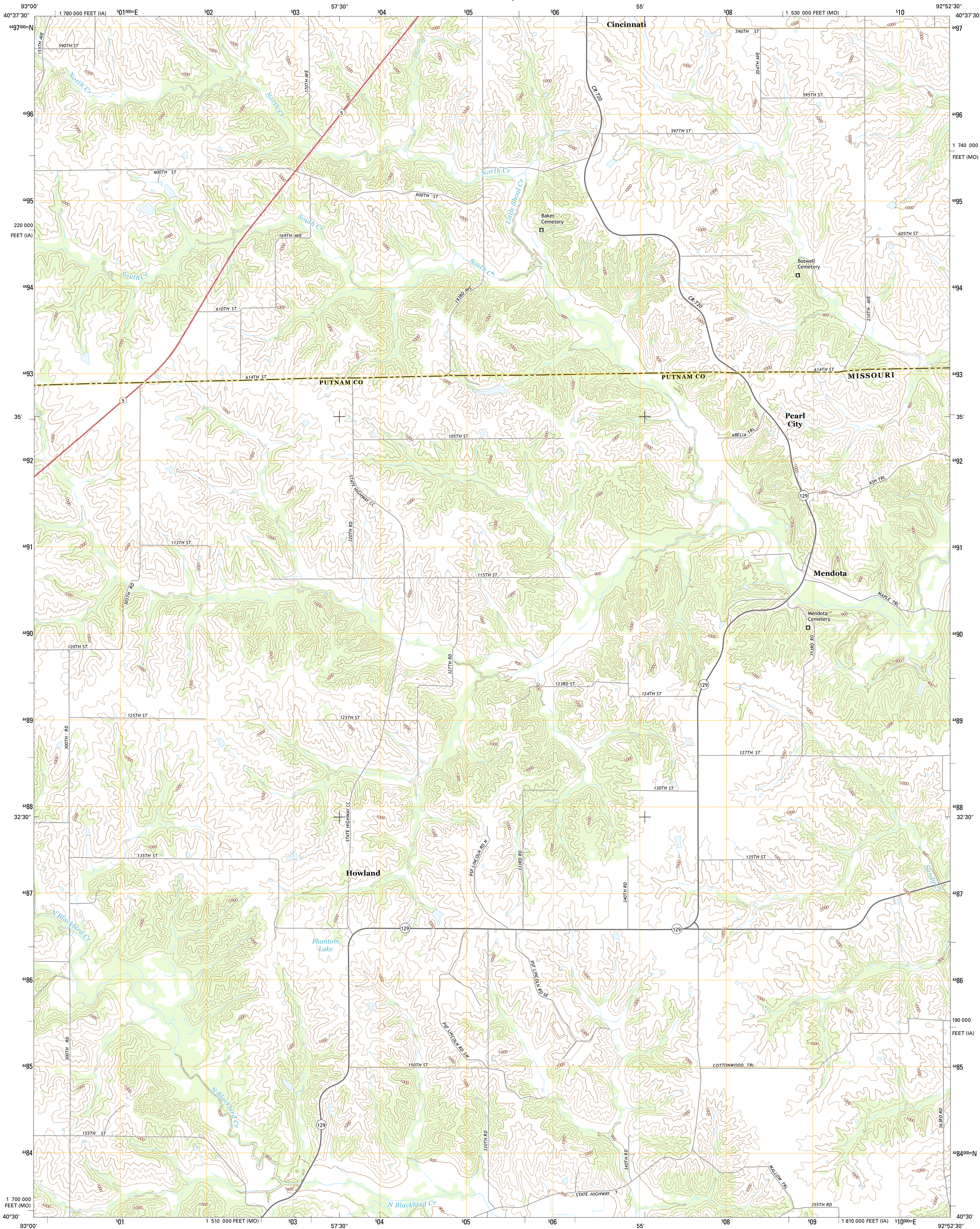




U.S. DEPARTMENT OF THE INTERIOR
U.S. GEOLOGICAL SURVEY



MENDOTA QUADRANGLE
MISSOURI-IOWA
7.5-MINUTE SERIES



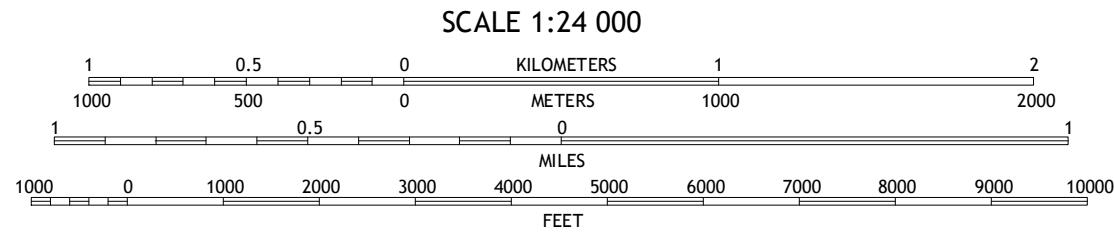
Produced by the United States Geological Survey
North American Datum of 1983 (NAD83)
World Geodetic System of 1984 (WGS84)
1 000-meter grid: Universal Transverse Mercator, Zone 15T
10 000-foot ticks: Missouri Coordinate System of 1983 (central zone), Iowa Coordinate System of 1983 (south zone)

This map is not a legal document. Boundaries may be generalized for this map scale. Private lands within government reservations may not be shown. Obtain permission before entering private lands.

Imagery.....NAIP, June 2012 - July 2013
Roads.....HERE, ©2013
Names.....GNIS, 2013
Hydrography.....National Hydrography Dataset, 2012
Contours.....National Elevation Dataset, 2013
Boundaries.....Multiple sources; see metadata file 1972 - 2014
Public Land Survey System.....BLM, 2011

UTM GRID AND 2015 MAGNETIC NORTH DECLINATION AT CENTER OF SHEET

U.S. National Grid
100,000 m Square ID
WE
Grid Zone Designation
15T



CONTOUR INTERVAL 20 FEET
NORTH AMERICAN VERTICAL DATUM OF 1988

This map was produced to conform with the National Geospatial Program US Topo Product Standard, 2011.
A metadata file associated with this product is draft version 0.6.18



1	2	3
4	5	
6	7	8

ADJOINING QUADRANGLES

1 Seymour East
2 Centerville West
3 Centerville East
4 Lake Thunderhead
5 Omaha
6 Unionville West
7 Unionville East
8 Graysville

ROAD CLASSIFICATION

Expressway
Secondary Hwy
Ramp

Local Connector
Local Road
4WD

Interstate Route
US Route
State Route

MENDOTA, MO-IA
2015

