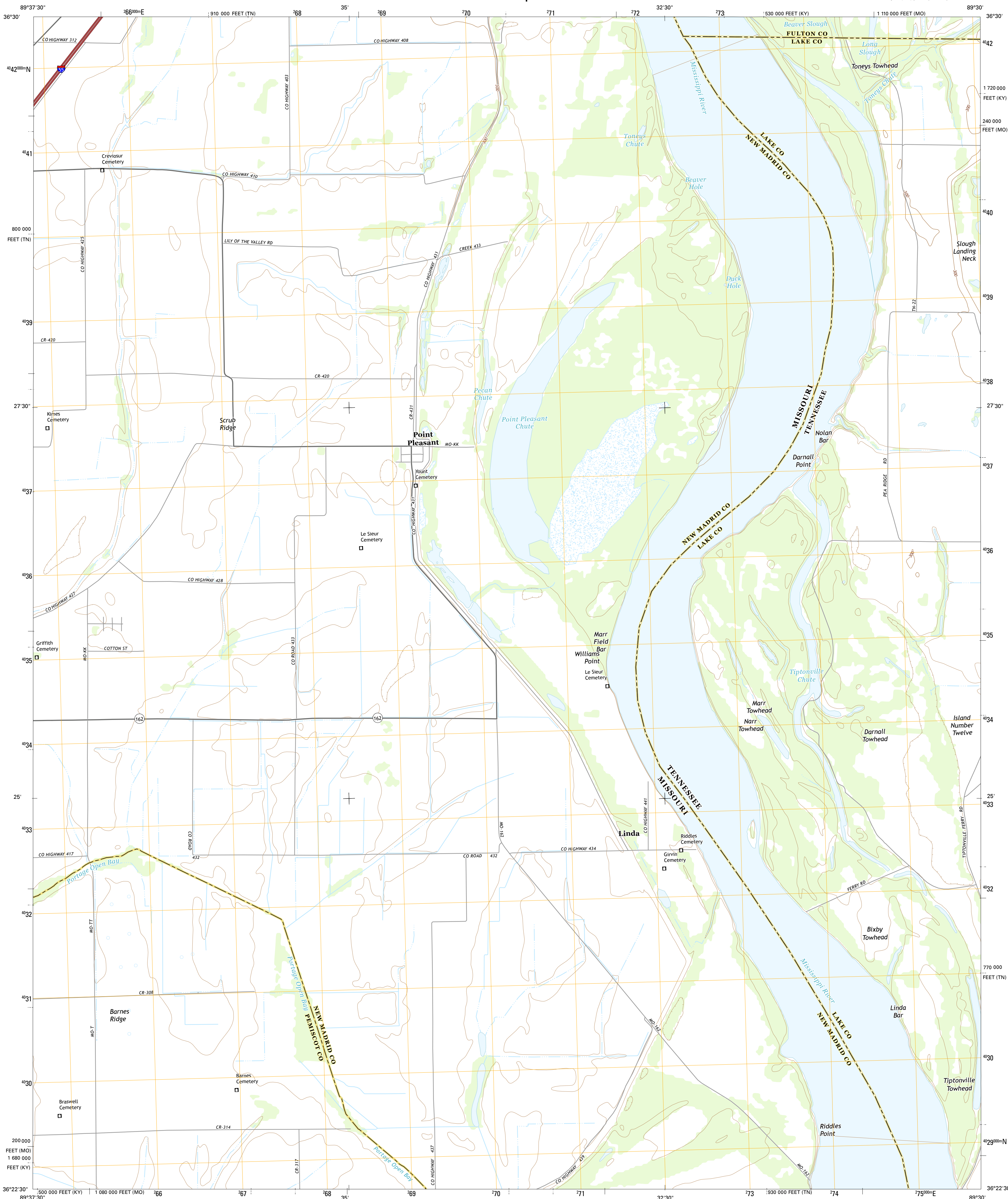




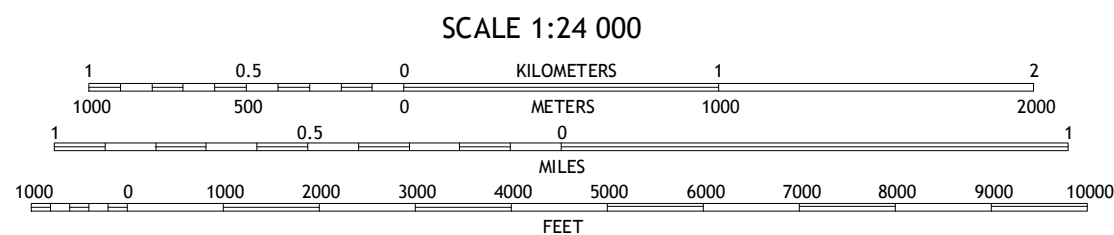
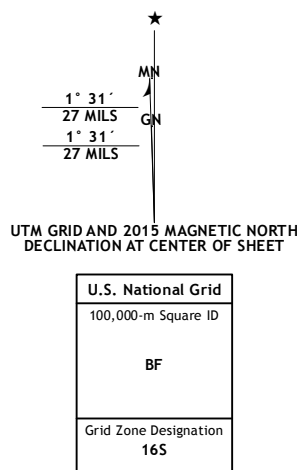
U.S. DEPARTMENT OF THE INTERIOR  
U.S. GEOLOGICAL SURVEY



POINT PLEASANT QUADRANGLE  
MISSOURI-TENNESSEE-KENTUCKY  
7.5-MINUTE SERIES



Produced by the United States Geological Survey  
North American Datum of 1983 (NAD83)  
North Geodetic System of 1994 (NGS94)  
1 000-meter grid: Universal Transverse Mercator, Zone 16S  
10 000-foot ticks: Missouri Coordinate System of 1983 (east zone), Tennessee Coordinate System of 1983 (south zone)  
Coordinate System of 1983 (south zone)  
This map is not a legal document. Boundaries may be generalized for this map scale. Private lands within government reservations may not be shown. Obtain permission before  
Imagery.....N.A.P., June 2012  
Roads.....HERE, ©2013  
Names.....GNIS, 2013  
Hydrography.....National Hydrography Dataset, 2012  
Contours.....National Elevation Dataset, 2008  
Boundaries.....Multiple sources; see metadata file 1972 - 2014  
Public Land Survey System.....BLM, 2011

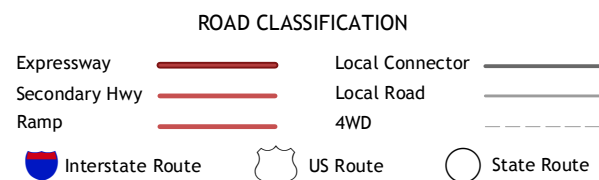


CONTOUR INTERVAL 10 FEET  
NORTH AMERICAN VERTICAL DATUM OF 1988  
This map was produced to conform with the  
National Geospatial Program US Topo Product Standard, 2011.  
A metadata file associated with this product is draft version 0.6.18



1	2	3
4	5	6
7	8	9

1 Catron  
2 New Madrid  
3 Hubbard Lake  
4 Portageville  
5 Tiptonville  
6 Stanley  
7 Moorings  
8 Ridgely



POINT PLEASANT, MO-TN-KY  
2015

