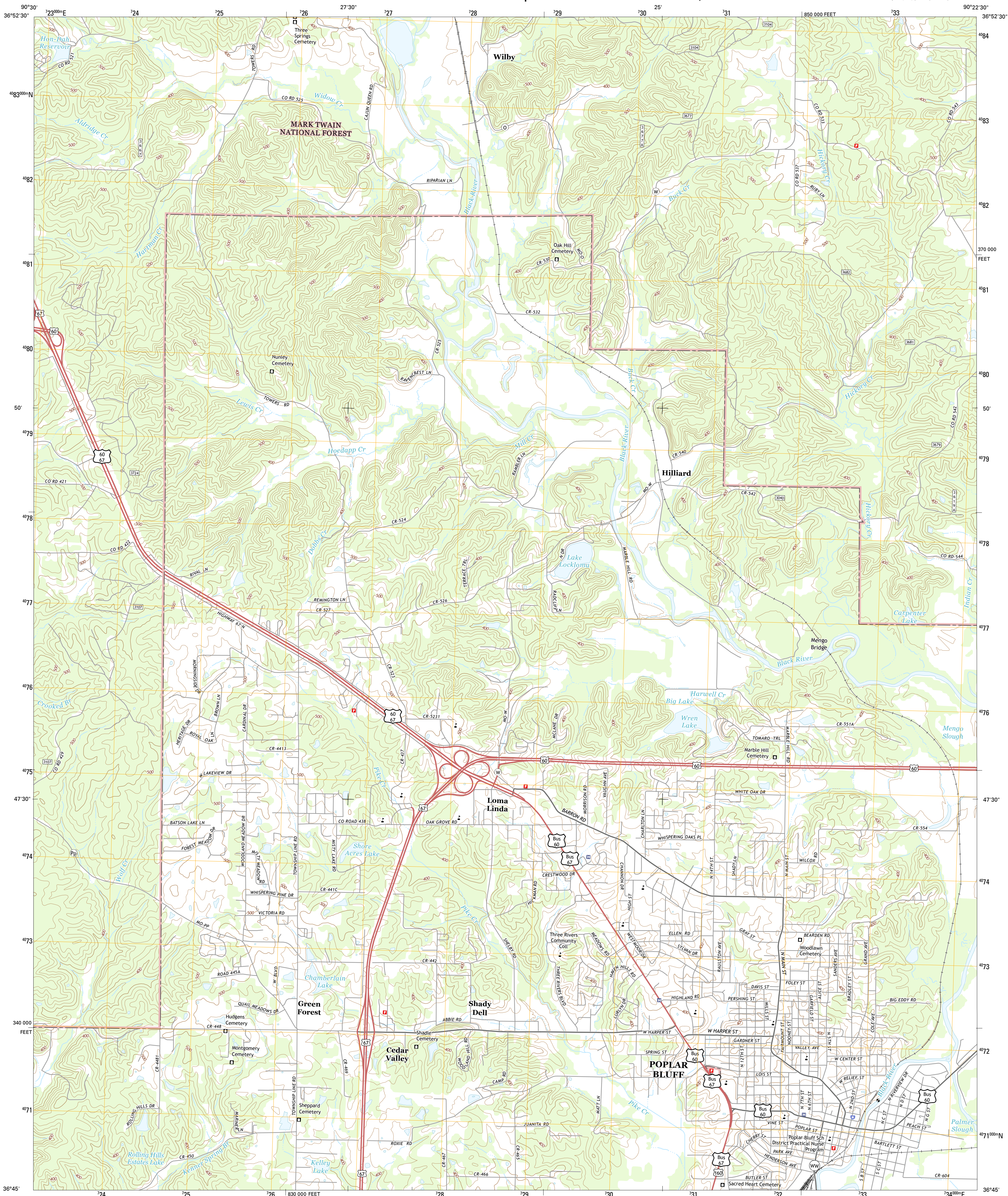




U.S. DEPARTMENT OF THE INTERIOR  
U.S. GEOLOGICAL SURVEY

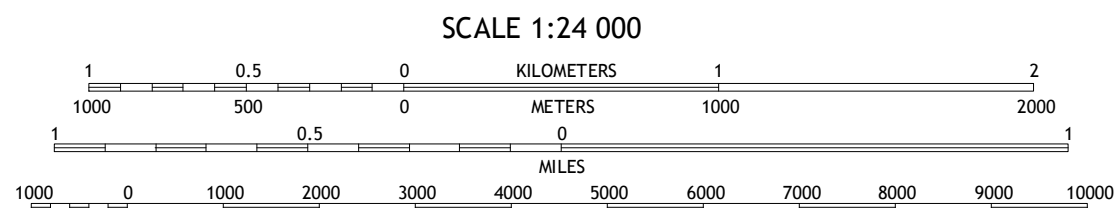


POPLAR BLUFF QUADRANGLE  
MISSOURI-BUTLER CO.  
7.5-MINUTE SERIES



Produced by the United States Geological Survey  
North American Datum of 1983 (NAD83)  
World Geodetic System of 1984 (WGS84)  
1:100,000 scale, Universal Transverse Mercator, Zone 15S  
10,000-foot ticks; Missouri Coordinate System of 1983 (east zone)  
This map is not a legal document. Boundaries may be generalized for this map scale. Private lands within government reservations may not be shown. Obtain permission before entering private lands.  
Imagery.....NAIP, June 2012  
Roads.....HERE, ©2013  
Roads within US Forest Service Lands.....FSTopo Data with limited Forest Service updates, 2013  
Names.....National Hydrography Dataset, 2013  
Hydrography.....National Hydrography Dataset, 2012  
Contours.....National Elevation Dataset, 2004  
Boundaries.....Multiple sources; see metadata file 1972 - 2014  
Public Land Survey System.....BLM, 2011

UTM GRID AND 2015 MAGNETIC NORTH DECLINATION AT CENTER OF SHEET  
U.S. National Grid  
100,000-m Square ID  
YA  
Grid Zone Designation  
19S



CONTOUR INTERVAL 20 FEET  
NORTH AMERICAN VERTICAL DATUM OF 1988  
This map was produced to conform with the National Geospatial Program US Topo Product Standard, 2011.  
A metadata file associated with this product is draft version 0.6.18



1	2	3
4	5	6
7	8	9

ADJOINING QUADRANGLES

ROAD CLASSIFICATION  
Expressway  
Secondary Hwy  
Ramp  
Interstate Route  
US Route  
FS Primary Route  
Local Connector  
Local Road  
4WD  
US Route  
FS Passenger Route  
FS High Clearance Route  
Check with local Forest Service unit for current travel conditions and restrictions.

POPLAR BLUFF, MO  
2015

