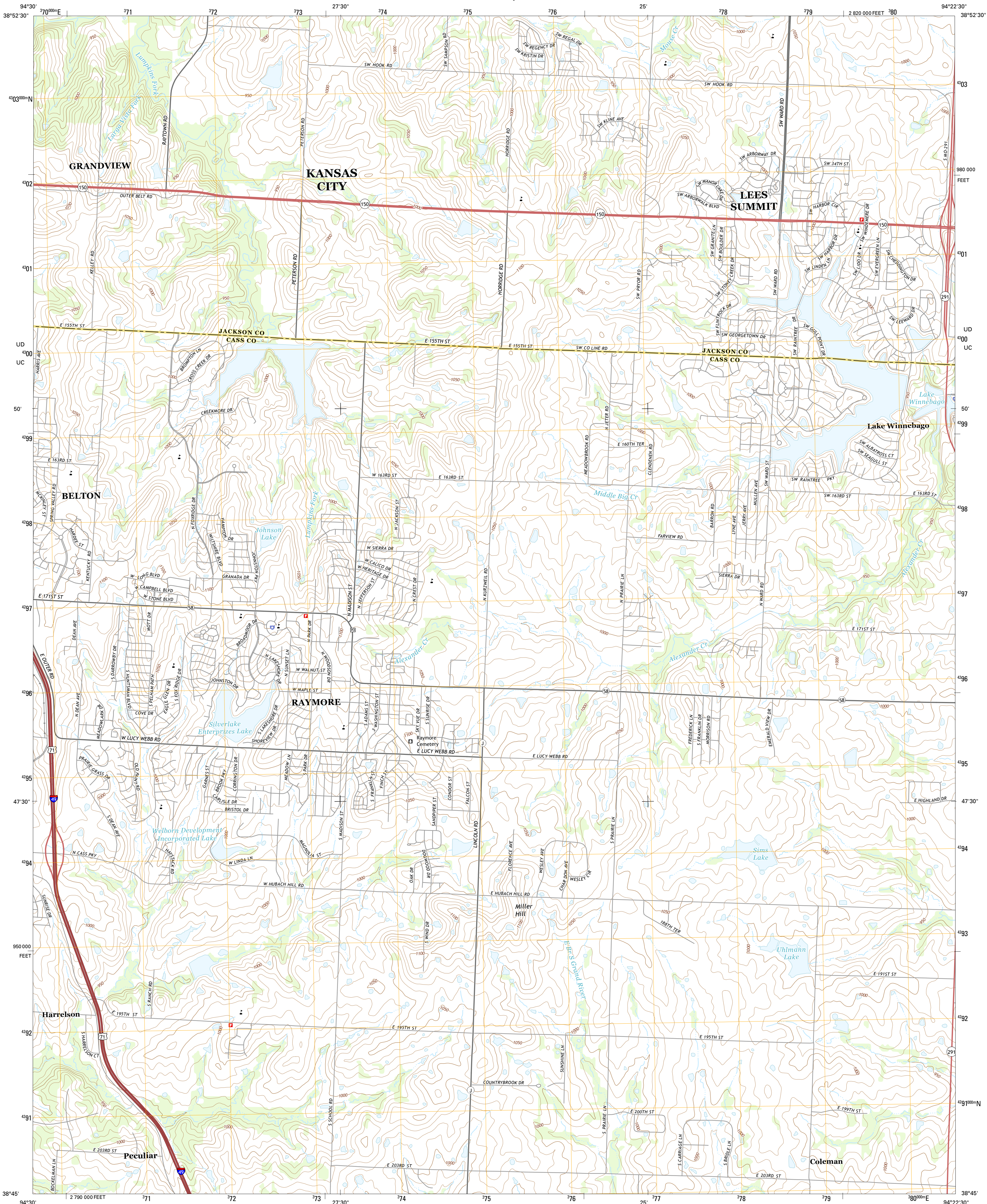




U.S. DEPARTMENT OF THE INTERIOR
U.S. GEOLOGICAL SURVEY



RAYMORE QUADRANGLE
MISSOURI
7.5-MINUTE SERIES



Produced by the United States Geological Survey
North American Datum of 1983 (NAD83)
World Geodetic System of 1984 (WGS84). Projection and
1000-meter grid: Universal Transverse Mercator, Zone 15S
10 000-foot ticks: Missouri Coordinate System of 1983 (west
zone)

This map is not a legal document. Boundaries may be
generalized for this map scale. Private lands within government
reservations may not be shown. Obtain permission before
entering private lands.

Imagery.....NAIP, June 2012
Roads.....HERE, ©2013
Names.....GNIS, 2013
Hydrography.....National Hydrography Dataset, 2012
Contours.....National Elevation Dataset, 2008
Boundaries.....Multiple sources; see metadata file 1972-2014
Public Land Survey System.....BLM, 2011

UTM GRID AND 2015 MAGNETIC NORTH
DECLINATION AT CENTER OF SHEET

U.S. National Grid
100,000-m Square ID
UD
UC
Grid Zone Designation
15S

SCALE 1:24 000
1 0.5 0 1 2
1000 500 0 1000 2000
KILOMETERS
1 0.5 0 1000 2000
METERS
1 0 1000 2000 3000 4000 5000 6000 7000 8000 9000 10000
MILES
FEET

CONTOUR INTERVAL 10 FEET
NORTH AMERICAN VERTICAL DATUM OF 1988

This map was produced to conform with the
National Geospatial Program US Topo Product Standard, 2011.
A metadata file associated with this product is draft version 0.6.18



QUADRANGLE LOCATION

ADJOINING QUADRANGLES
1 Grandview
2 Lees Summit
3 Lake Jacomo
4 Belton
5 Pleasant Hill
6 West Line
7 Peculiar
8 Harrisonville

ROAD CLASSIFICATION
Expressway
Secondary Hwy
Ramp
Interstate Route
Local Connector
Local Road
4WD
US Route
State Route

RAYMORE, MO
2015



USGS X 4 K 7 2 3 1
NCA REF NO.