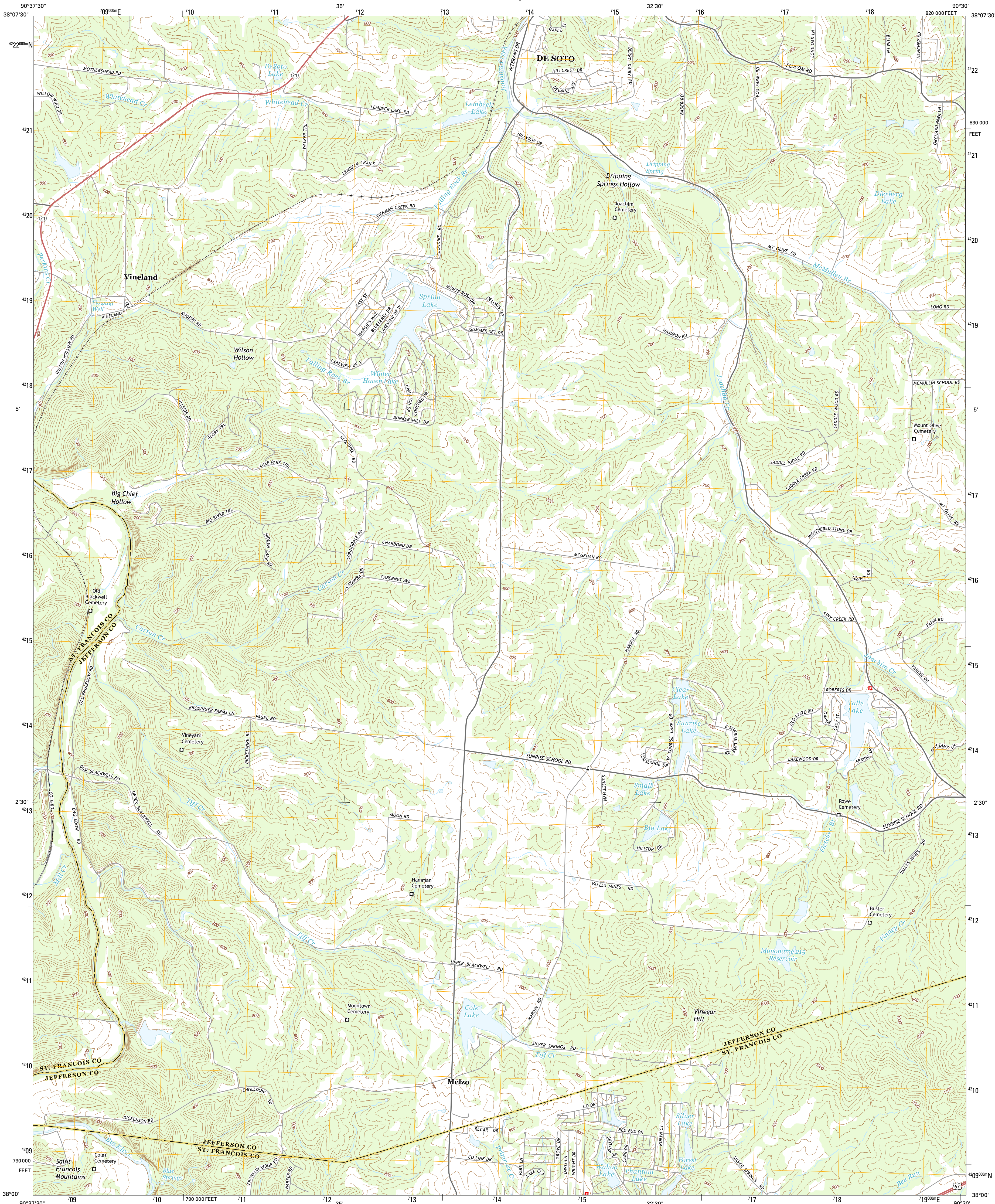




U.S. DEPARTMENT OF THE INTERIOR
U.S. GEOLOGICAL SURVEY



VINELAND QUADRANGLE
MISSOURI
7.5-MINUTE SERIES



Produced by the United States Geological Survey
North American Datum of 1983 (NAD83). Projection and
World Geodetic System of 1984 (WGS84). Zone 15S
1000-meter grid; Universal Transverse Mercator, Zone 15S
10 000-foot ticks; Missouri Coordinate System of 1983 (east zone)

This map is not a legal document. Boundaries may be
generalized for this map scale. Private lands within government
reservations may not be shown. Obtain permission before
entering private lands.

Imagery.....NAIP, June 2012
Roads.....HERE, c2013
Names.....GNIS, 2013
Hydrography.....National Hydrography Dataset, 2012
Contours.....National Elevation Dataset, 2012
Boundaries.....Multiple sources; see metadata file 1972-2014
Public Land Survey System.....BLM, 2011

UTM GRID AND 2011 MAGNETIC NORTH
DECLINATION AT CENTER OF SHEET

U.S. National Grid
100,000-m Square ID
YC
Grid Zone Designation
15S

SCALE 1:24 000
1 0.5 0 0.5 1 2
1000 500 0 500 1000 2000
KILOMETERS
1 0.5 0 0.5 1 2
1000 500 0 500 1000 2000
METERS
1 0 1000 2000 3000 4000 5000 6000 7000 8000 9000 10000
MILES
FEET

CONTOUR INTERVAL 20 FEET
NORTH AMERICAN VERTICAL DATUM OF 1988

This map was produced to conform with the
National Geospatial Program US Topo Product Standard, 2011.
A metadata file associated with this product is draft version 0.6.18



QUADRANGLE LOCATION

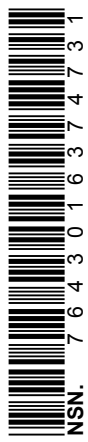
ROAD CLASSIFICATION
Expressway Local Connector
Secondary Hwy Local Road
Ramp 4WD
Interstate Route US Route State Route

1	2	3
4	5	6
7	8	9

ADJOINING QUADRANGLES

1 Fletcher
2 De Soto
3 Festus
4 Tiff
5 Halfway
6 Mineral Point
7 Bonne Terre
8 French Village

VINELAND, MO
2015



NSN 756-010-604-6600
NGA REF NO. USGSX24K46600