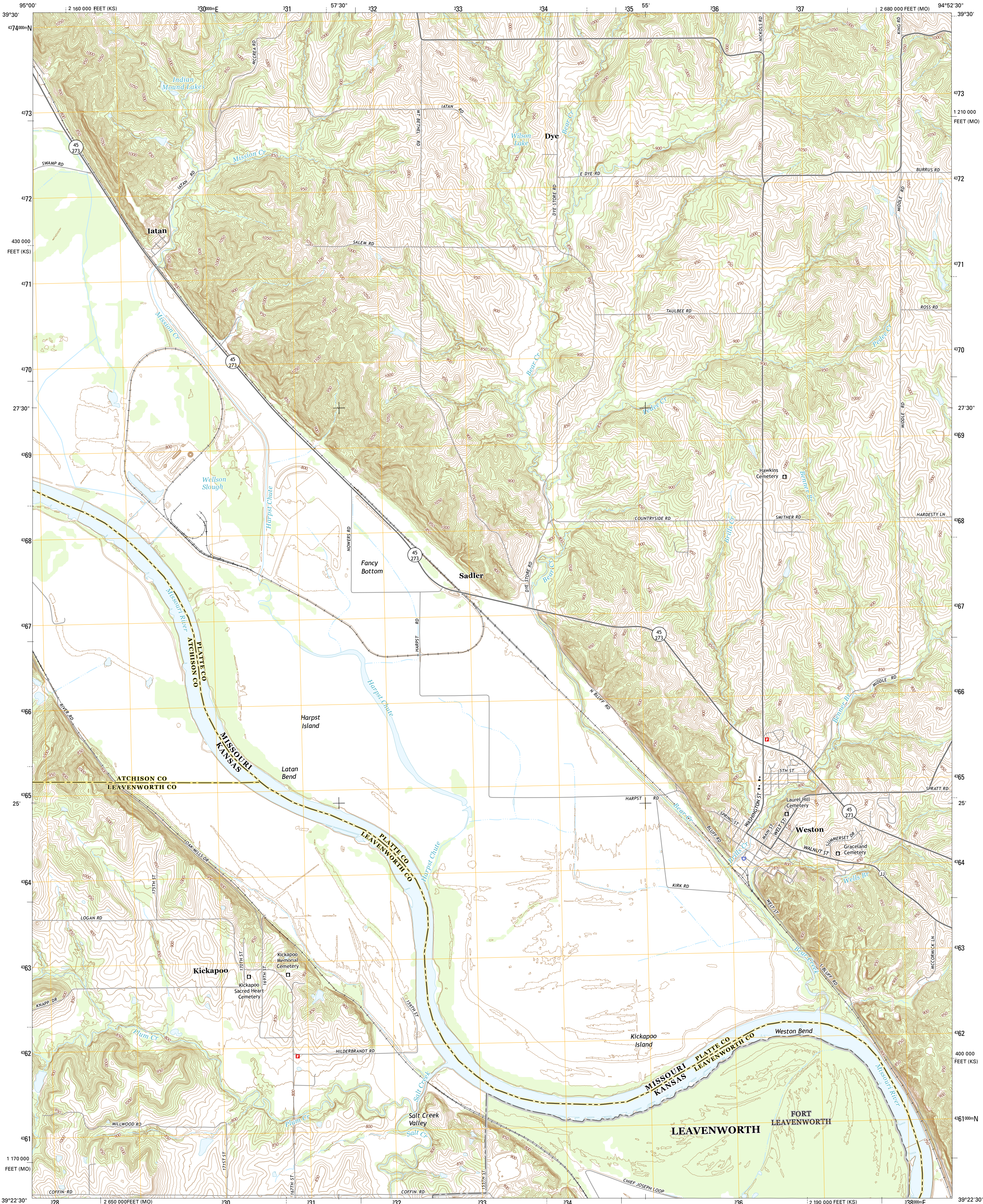




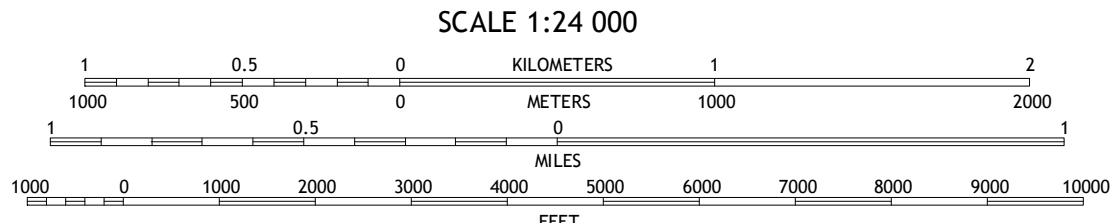
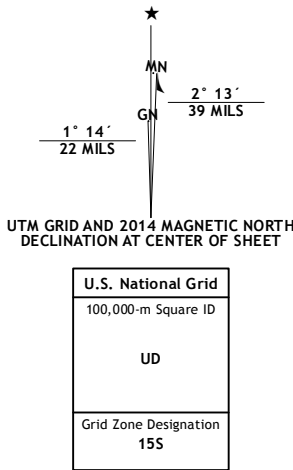
U.S. DEPARTMENT OF THE INTERIOR
U.S. GEOLOGICAL SURVEY



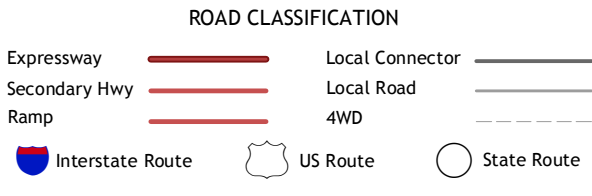
WESTON QUADRANGLE
MISSOURI-KANSAS
7.5-MINUTE SERIES



Produced by the United States Geological Survey
North American Datum of 1983 (NAD83)
World Geodetic System of 1984 (WGS84)
1 000-meter grid; Universal Transverse Mercator, Zone 15S
10 000-foot ticks; Missouri Coordinate System of 1983 (west zone), Kansas Coordinate System of 1983 (north zone)
This map is not a legal document. Boundaries may be generalized for this map scale. Private lands within government reservations may not be shown. Obtain permission before entering private lands.
Imagery.....NAP, June 2012
Roads.....HERE, ©2013
Names.....GNIS, 2013
Hydrography.....National Hydrography Dataset, 2012
Contours.....National Elevation Dataset, 2014
Boundaries.....Multiple sources; see metadata file 1972-2014
Public Land Survey System.....BLM, 2011



CONTOUR INTERVAL 10 FEET
NORTH AMERICAN VERTICAL DATUM OF 1988
This map was produced to conform with the
National Geospatial Program US Topo Product Standard, 2011.
A metadata file associated with this product is draft version 0.6.18



1	2	3
4	5	6
7	8	9

ADJOINING QUADRANGLES

1 Atchison East
2 De Kalb
3 Osborn
4 Oak Mills
5 Tracy
6 Easton
7 Leavenworth
8 Platte City

WESTON, MO-KS
2014

