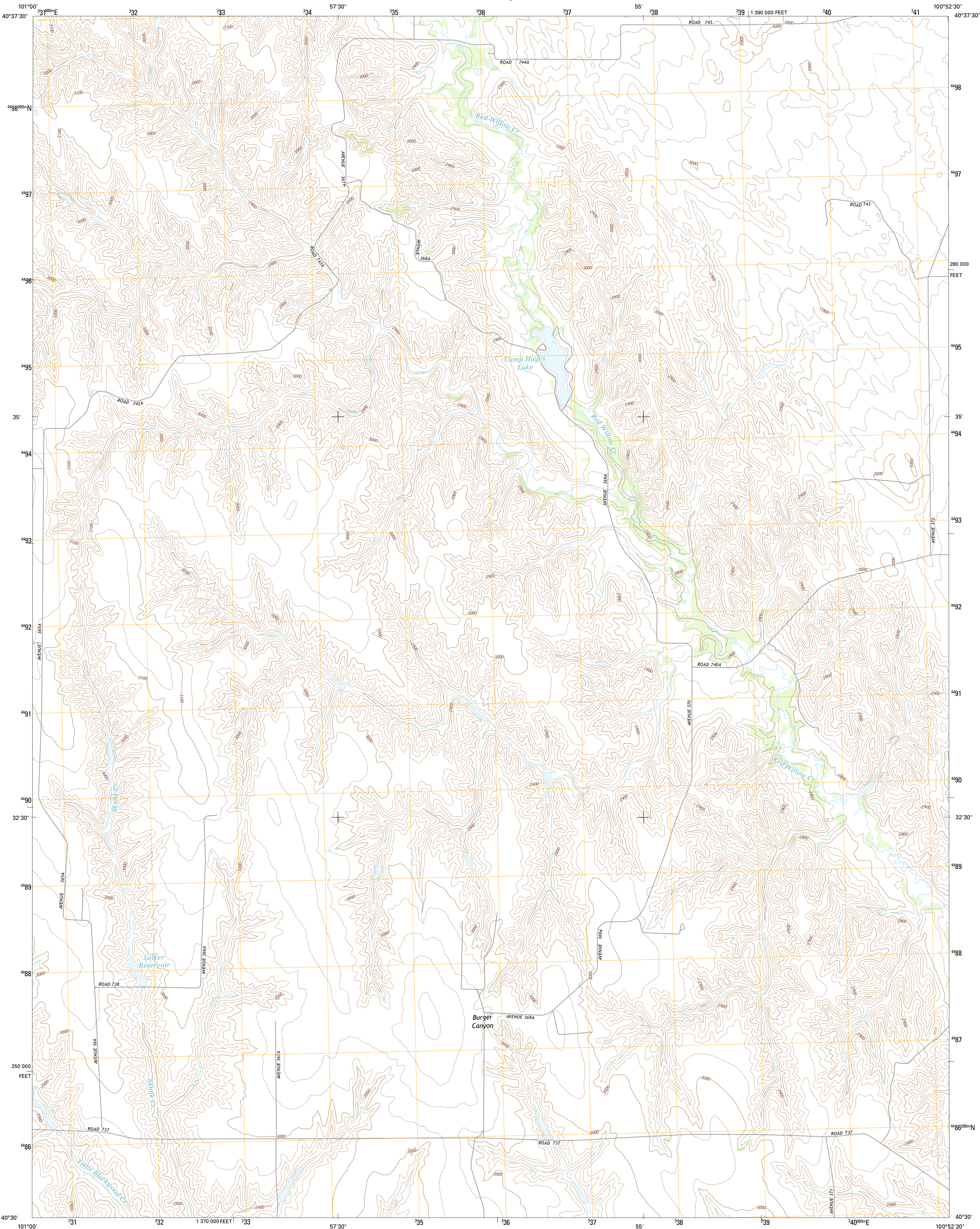




U.S. DEPARTMENT OF THE INTERIOR
U.S. GEOLOGICAL SURVEY



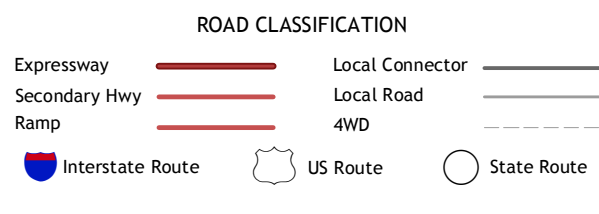
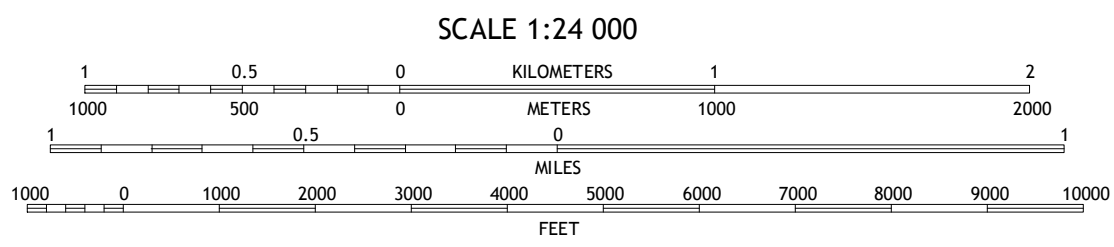
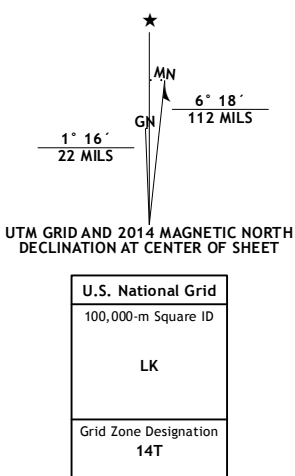
CAMP HAYES LAKE QUADRANGLE
NEBRASKA-HAYES CO.
7.5-MINUTE SERIES



Produced by the United States Geological Survey
North American Datum of 1983 (NAD83)
World Geodetic System of 1984 (WGS84) Projection and
1 000-meter grid: Universal Transverse Mercator, Zone 14T
10 000-foot ticks: Nebraska Coordinate System of 1983

This map is not a legal document. Boundaries may be
generalized for this map scale. Private lands within government
reservations may not be shown. Obtain permission before
entering private lands.

Imagery.....N.A.P. July 2012
Roads.....HERE. ©2013
Names.....GNIS. 2013
Hydrography.....National Hydrography Dataset, 2012
Contours.....National Elevation Dataset, 2001
Boundaries.....Multiple sources; see metadata file 1972 - 2014



1	2	3
4	5	6
7	8	9

ADJOINING QUADRANGLES

1 Suttlers Canyon West
2 Suttlers Canyon East
3 Camp Hayes Lake NE
4 Hayes Center
5 Camp Hayes Lake SE
6 Palisade NE
7 Burger Canyon West
8 Burger Canyon East

CAMP HAYES LAKE, NE
2014

