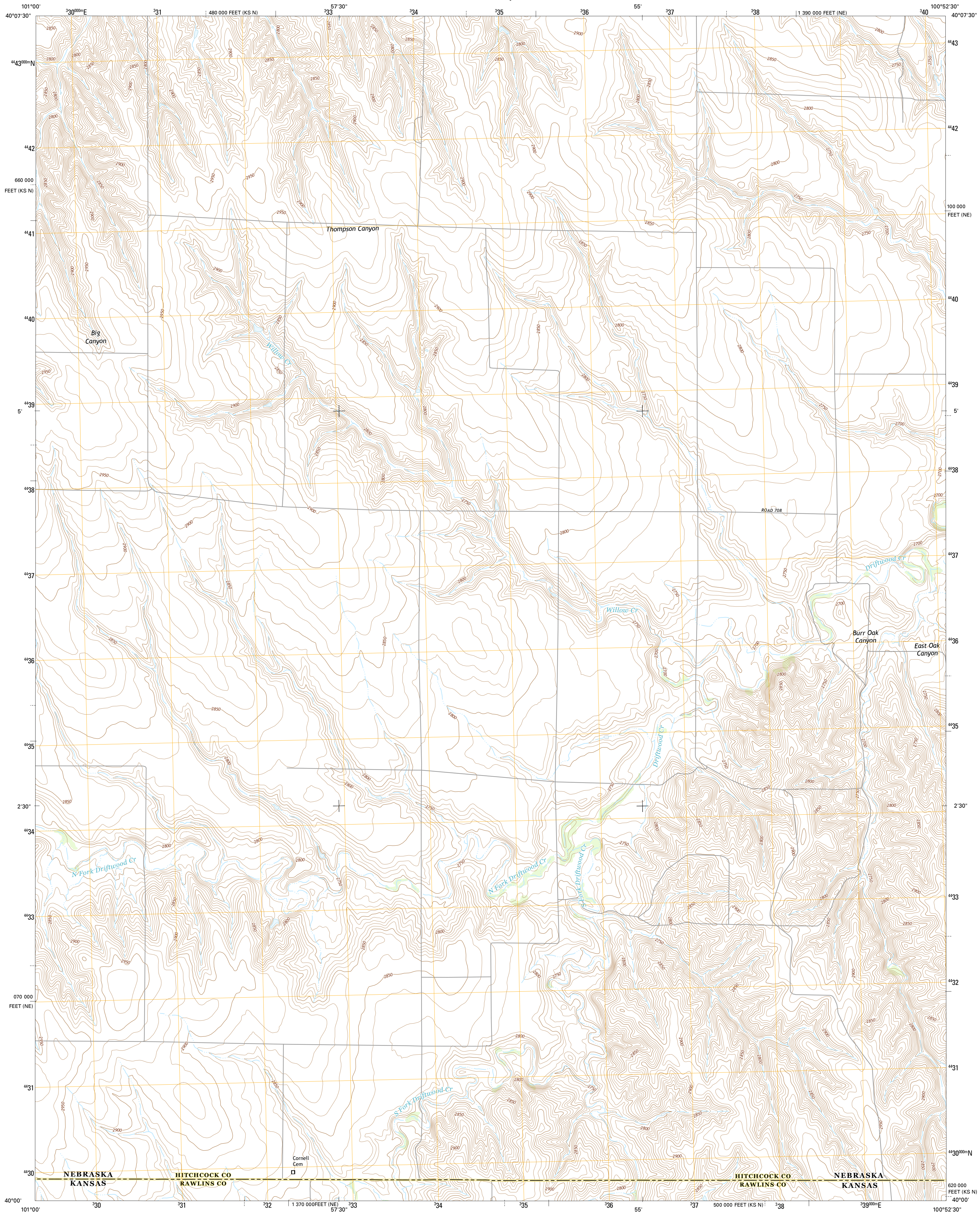




U.S. DEPARTMENT OF THE INTERIOR  
U.S. GEOLOGICAL SURVEY



CULBERTSON SW QUADRANGLE  
NEBRASKA-KANSAS  
7.5-MINUTE SERIES



Produced by the United States Geological Survey  
North American Datum of 1983 (NAD83)  
World Geodetic System of 1984 (WGS84). Projection and  
1000-meter grid: Universal Transverse Mercator, Zone 14T  
10 000-foot ticks: Nebraska Coordinate System of 1983, Kansas  
Coordinate System of 1983 (north zone)

This map is not a legal document. Boundaries may be  
generalized for this map scale. Private lands within government  
reservations may not be shown. Obtain permission before  
entering private lands.

Imagery.....NAIP, June 2012 - July 2012  
Roads.....HERE, ©2013  
Names.....GNIS, 2013  
Hydrography.....National Hydrography Dataset, 2012  
Contours.....National Elevation Dataset, 2001  
Boundaries.....Multiple sources; see metadata file 1972 - 2014

UTM GRID AND 2014 MAGNETIC NORTH  
DECLINATION AT CENTER OF SHEET

U.S. National Grid  
100,000-m Square ID  
LK  
Grid Zone Designation  
14T

SCALE 1:24 000  
1 0.5 0 KILOMETERS 1 2  
1000 500 0 METERS 1000 2000  
1 0.5 0 MILES 1000 2000 3000 4000 5000 6000 7000 8000 9000 10000  
FEET

CONTOUR INTERVAL 10 FEET  
NORTH AMERICAN VERTICAL DATUM OF 1988

This map was produced to conform with the  
National Geospatial Program US Topo Product Standard, 2011.  
A metadata file associated with this product is draft version 0.6.16



QUADRANGLE LOCATION

ROAD CLASSIFICATION  
Expressway Local Connector  
Secondary Hwy Local Road  
Ramp 4WD  
Interstate Route US Route State Route

1	2	3
4	5	6
7	8	9

1 Trenton  
2 Culbertson NW  
3 Culbertson  
4 Trenton SE  
5 Culbertson SE  
6 Atwood NE  
7 Herndon NW  
8 Herndon

CULBERTSON SW, NE-KS  
2014

