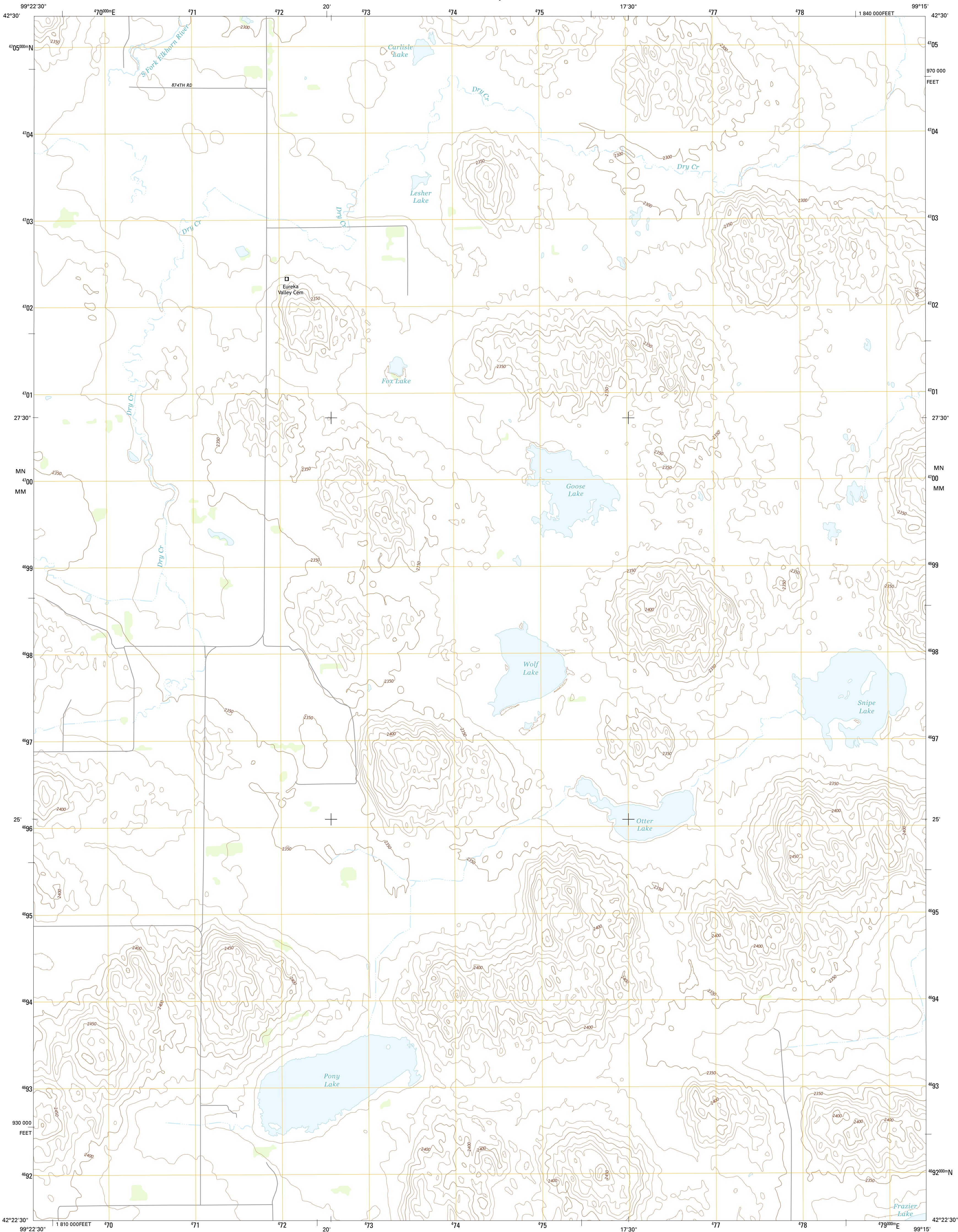




U.S. DEPARTMENT OF THE INTERIOR
U.S. GEOLOGICAL SURVEY



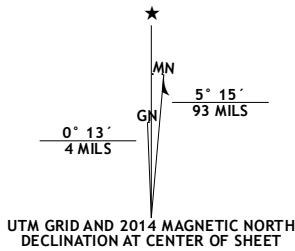
PONY LAKE QUADRANGLE
NEBRASKA-ROCK CO.
7.5-MINUTE SERIES



Produced by the United States Geological Survey
North American Datum of 1983 (NAD83)
World Geodetic System of 1984 (WGS84). Projection and
1 000-meter grid: Universal Transverse Mercator, Zone 14T
10 000-foot ticks: Nebraska Coordinate System of 1983

This map is not a legal document. Boundaries may be
generalized for this map scale. Private lands within government
reservations may not be shown. Obtain permission before
entering private lands.

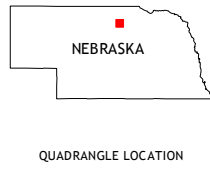
Imagery.....NAIP, July 2012
Roads.....HERE, ©2013
Names.....GNIS, 2013
Hydrography.....National Hydrography Dataset, 2012
Contours.....National Elevation Dataset, 2002
Boundaries.....Multiple sources; see metadata file 1972 - 2014



U.S. National Grid	
100,000-m Square ID	
MN	00
Grid Zone Designation	
14T	

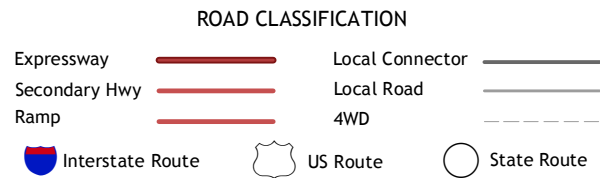


CONTOUR INTERVAL 10 FEET
NORTH AMERICAN VERTICAL DATUM OF 1988
This map was produced to conform with the
National Geospatial Program US Topo Product Standard, 2011.
A metadata file associated with this product is draft version 0.6.16



1	2	3
4	5	6
7	8	9

1 Newport SW
2 Newport
3 Stuart
4 Linke Lake
5 Dora Lake
6 Stockdale Lake
7 Sylvant
8 Lambs Lake



PONY LAKE, NE
2014

