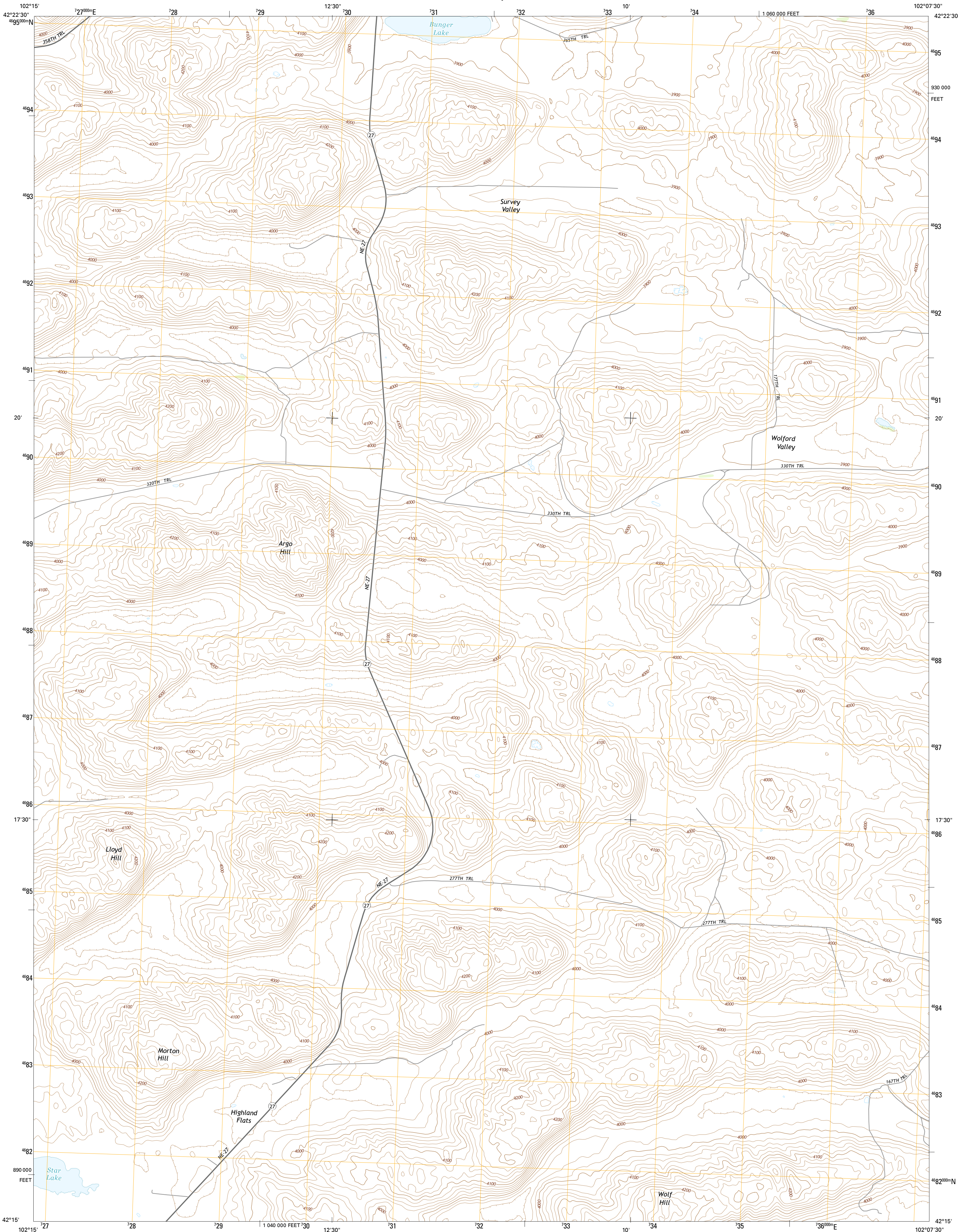




U.S. DEPARTMENT OF THE INTERIOR
U.S. GEOLOGICAL SURVEY



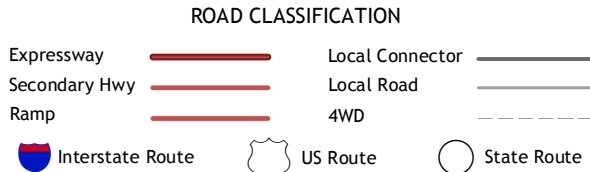
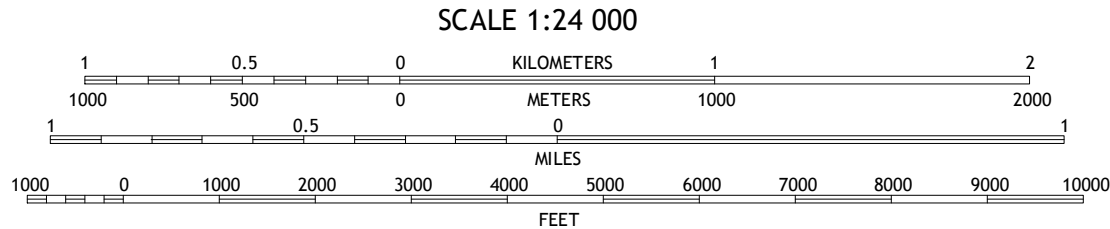
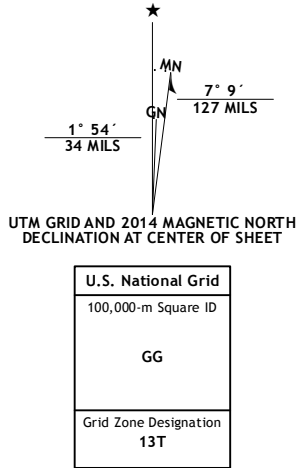
ARGO HILL QUADRANGLE
NEBRASKA-SHERIDAN CO.
7.5-MINUTE SERIES



Produced by the United States Geological Survey
North American Datum of 1983 (NAD83)
World Geodetic System of 1984 (WGS84). Projection and
1 000-meter grid; Universal Transverse Mercator, Zone 13T
10 000-foot ticks; Nebraska Coordinate System of 1983

This map is not a legal document. Boundaries may be
generalized for this map scale. Private lands within government
reservations may not be shown. Obtain permission before
entering private lands.

Imagery.....NAIP, June 2012
Roads.....HERE, ©2013
Names.....GNIS, 2013
Hydrography.....National Hydrography Dataset, 2012
Contours.....National Elevation Dataset, 2002
Boundaries.....Multiple sources; see metadata file 1972 - 2014



1	2	3	1 Twin Lakes NE
4		5	2 Dolly Warden Lake
6	7	8	3 Billys Lake
			4 Green Lake
			5 Wolford Valley
			6 White Lake
			7 Arnold Lake
			8 Lowe Valley

ADJOINING QUADRANGLES

ARGO HILL, NE
2014

