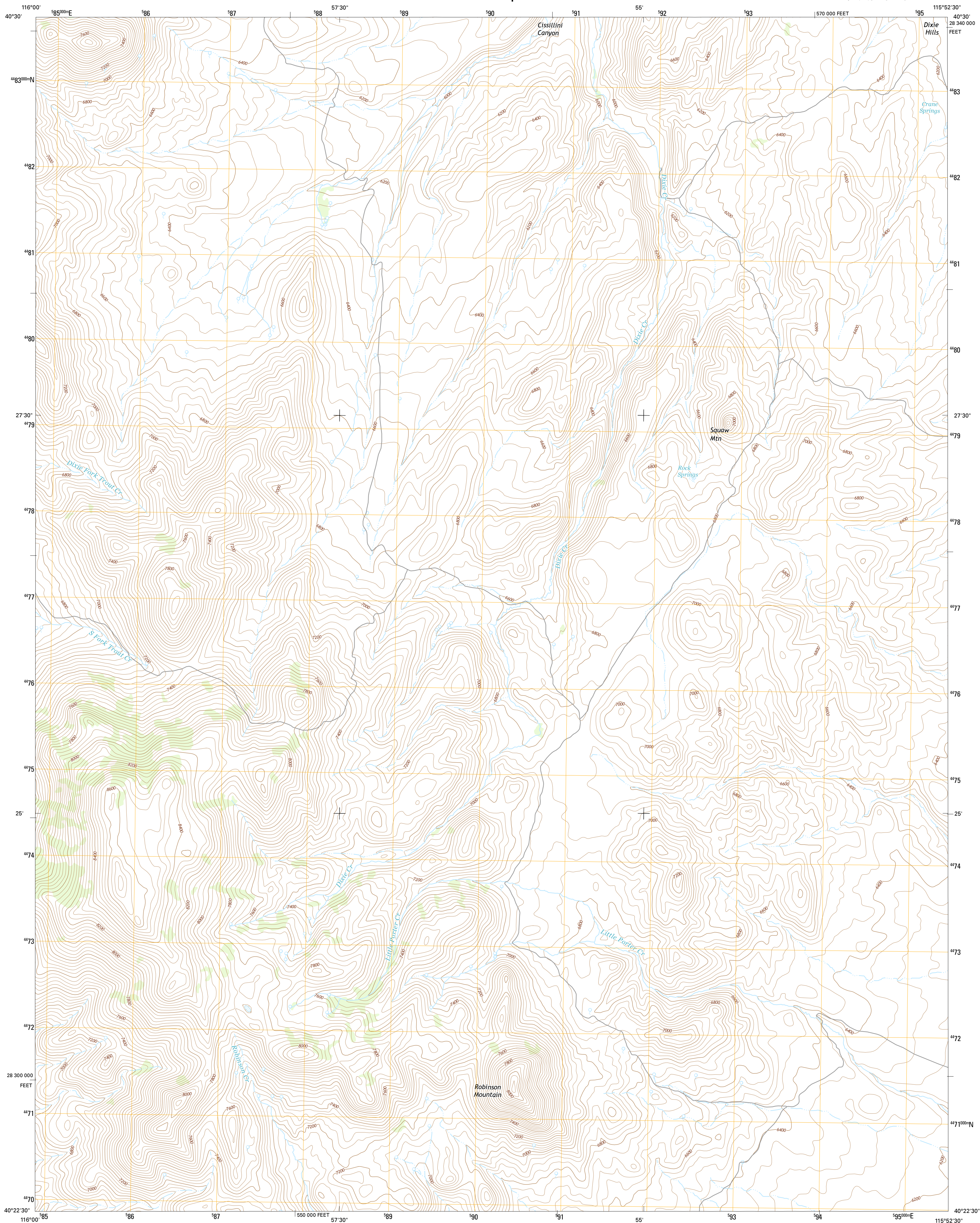




U.S. DEPARTMENT OF THE INTERIOR
U.S. GEOLOGICAL SURVEY



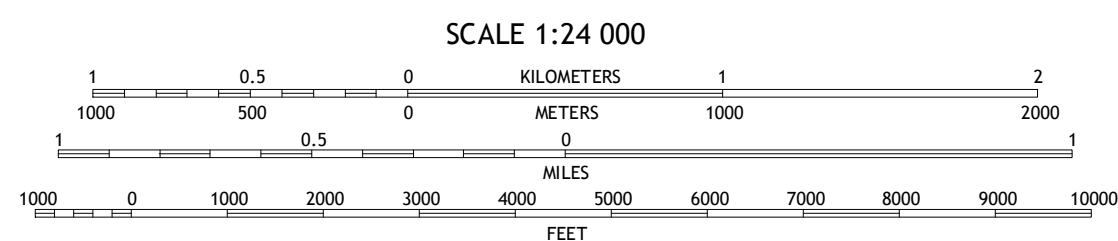
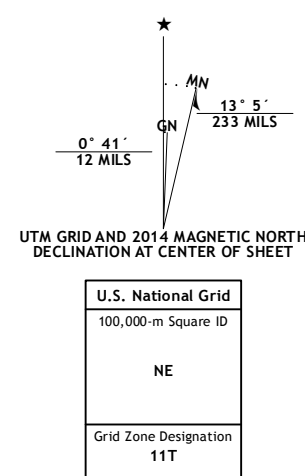
ROBINSON MOUNTAIN QUADRANGLE
NEVADA-ELKO CO.
7.5-MINUTE SERIES



Produced by the United States Geological Survey
 North American Datum of 1983 (NAD83)
 World Geodetic System of 1984 (WGS84). Projection and
 1 000-metre grid: Universal Transverse Mercator, Zone 11T
 10 000-foot ticks: Nevada Coordinate System of 1983 (east zone)

This map is not a legal document. Boundaries may be
 generalized for this map scale. Private lands within government
 reservations may not be shown. Omission permission before
 entering private lands.

Imagery.....NAP, July 2000
 Roads.....HERE, ©2000
 Names.....GNIS, 2000
 Hydrography.....National Hydrography Dataset, 1999
 Boundaries.....National Elevation Dataset, 1999
 Boundaries.....Multiple sources; see metadata file 1972-
 Public Land Survey System.....BLM, 2000



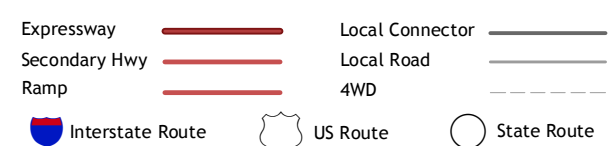
CONTOUR INTERVAL 40 FEET
NORTH AMERICAN VERTICAL DATUM OF 1988

This map was produced to conform with the
National Geospatial Program US Topo Product Standard, 2011.
A metadata file associated with this product is draft version 0.6.18



QUADRANGLE LOCATION

ROAD CLASSIFICATION



1	2	3	1 Ravens Nest 2 Bullion 3 Red Spring
4		5	4 Papoose Canyon 5 Cedar Ridge
6	7	8	6 Coffin Mountain 7 Bailey Mountain 8 East of Bailey Mountain

ADJOINING QUADRANGLES

ROBINSON MOUNTAIN, NV
2014

