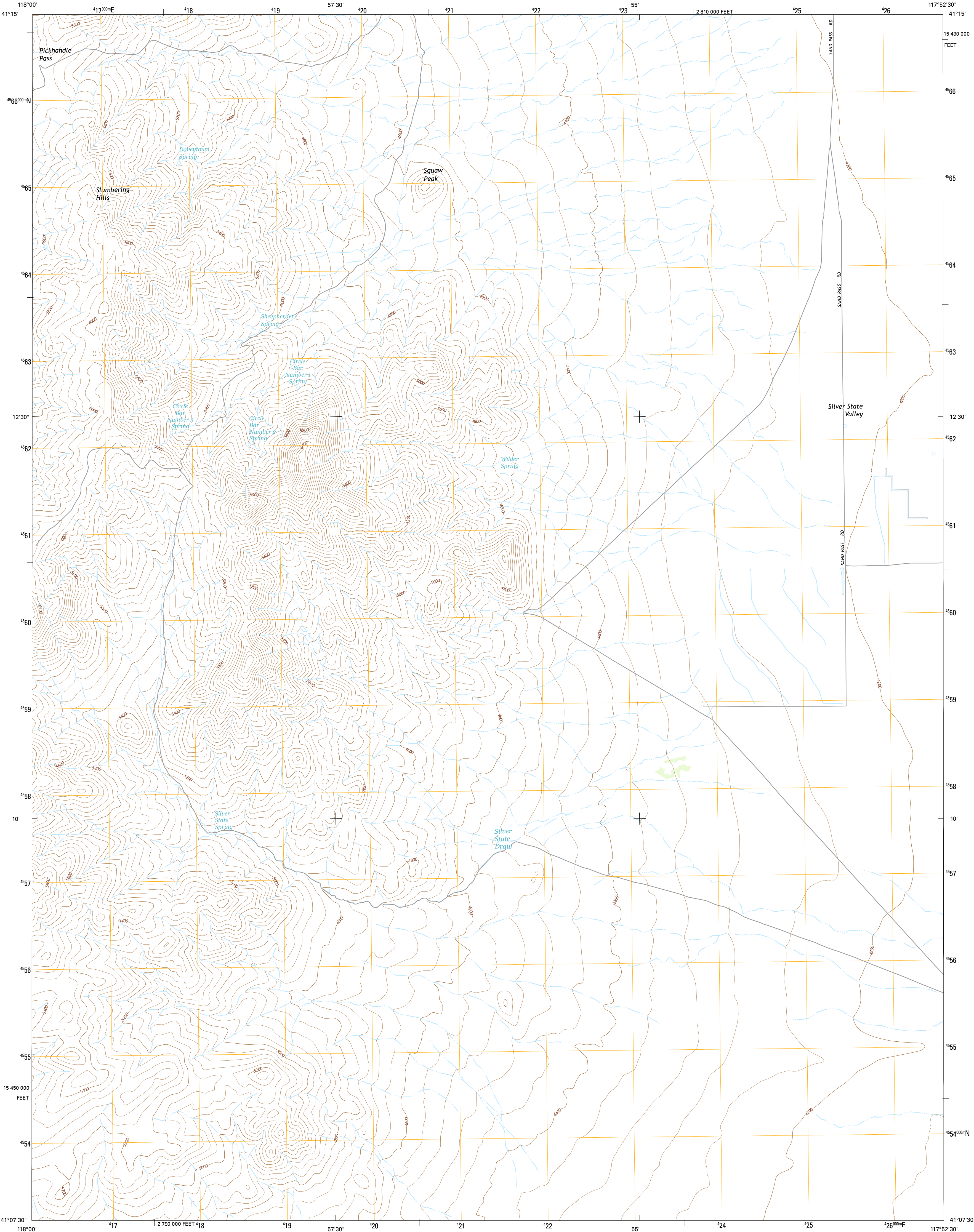




U.S. DEPARTMENT OF THE INTERIOR
U.S. GEOLOGICAL SURVEY



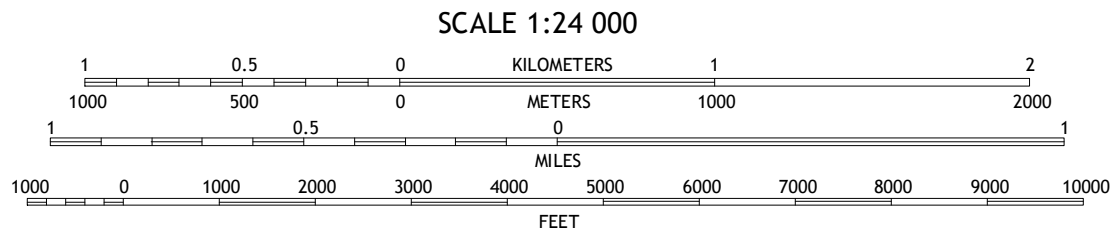
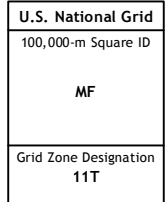
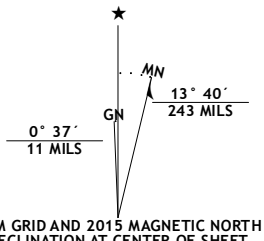
SILVER STATE DRAW QUADRANGLE
NEVADA-HUMBOLDT CO.
7.5-MINUTE SERIES



Produced by the United States Geological Survey
North American Datum of 1983 (NAD83)
World Geodetic System of 1984 (WGS84). Projection and
1 000-meter grid: Universal Transverse Mercator, Zone 11T
10 000-foot ticks: Nevada Coordinate System of 1983 (west
zone)

This map is not a legal document. Boundaries may be
generalized for this map scale. Private lands within govern-
ment reservations may not be shown. Obtain permission before
entering private lands.

Imagery.....NAIP, July 2013
Roads.....HERE, ©2013
Names.....GNIS, 2013
Hydrography.....National Hydrography Dataset, 2013
Contours.....National Elevation Dataset, 2002
Boundaries.....Multiple sources; see metadata file 1972-2014
Public Land Survey System.....BLM, 2011



CONTOUR INTERVAL 40 FEET
NORTH AMERICAN VERTICAL DATUM OF 1988
This map was produced to conform with the
National Geospatial Program US Topo Product Standard, 2011.
A metadata file associated with this product is draft version 0.6.18



ROAD CLASSIFICATION
Expressway.....
Secondary Hwy.....
Ramp.....
Interstate Route.....
US Route.....
Local Connector.....
Local Road.....
4WD.....
State Route.....

1	2	3
4	5	6
7	8	9

ADJOINING QUADRANGLES

1 Jackson Well
2 Awakening Peak
3 Mud Spring Canyon
4 Sombra Peak
5 Bloody Run Peak
6 Mormon Dan Butte
7 Barrett Springs
8 Winnemucca Mountain

SILVER STATE DRAW, NV
2015

