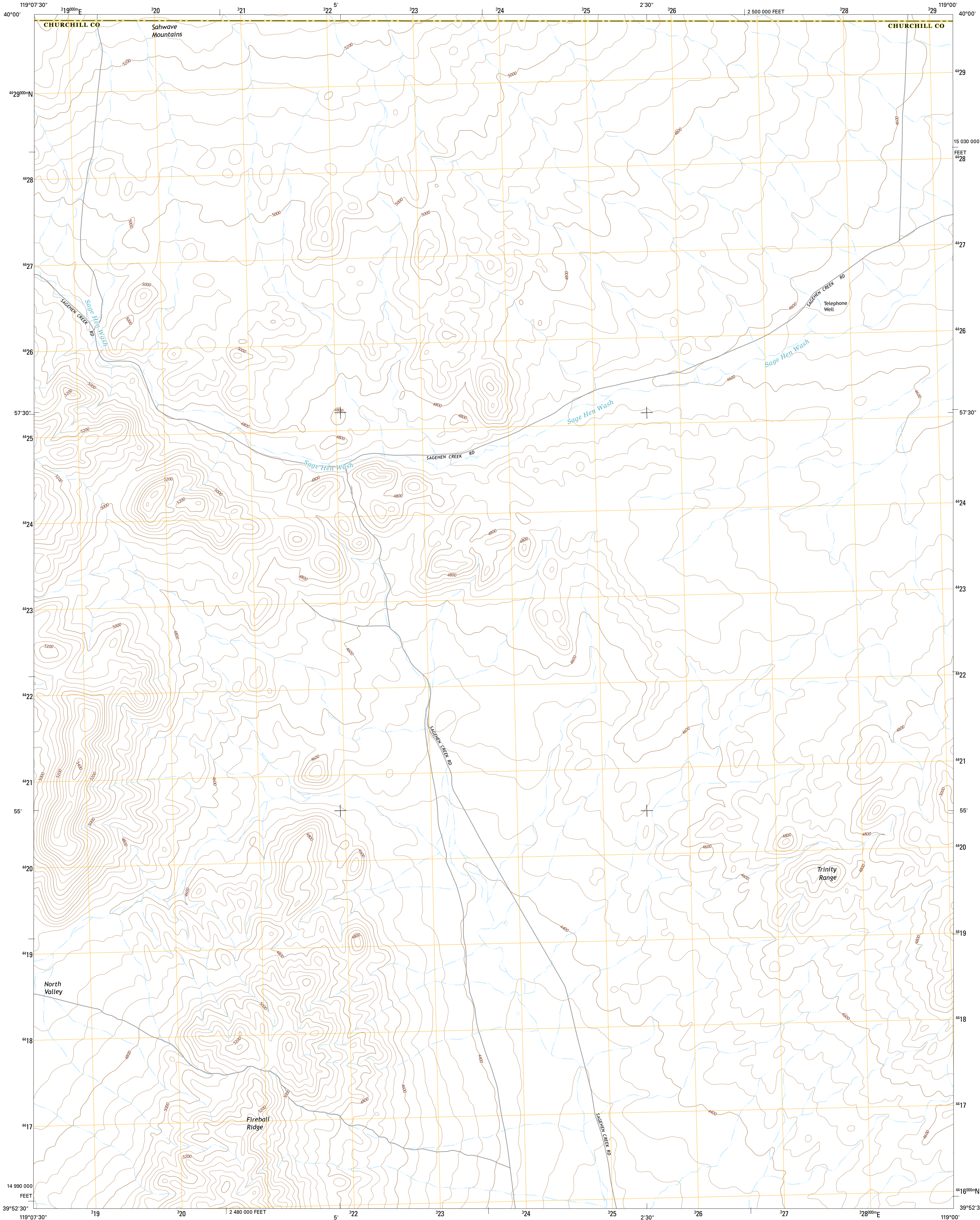




U.S. DEPARTMENT OF THE INTERIOR
U.S. GEOLOGICAL SURVEY



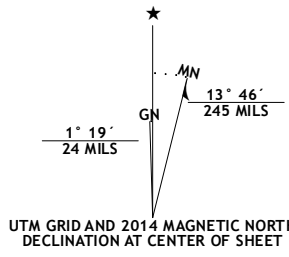
TELEPHONE WELL QUADRANGLE
NEVADA
7.5-MINUTE SERIES



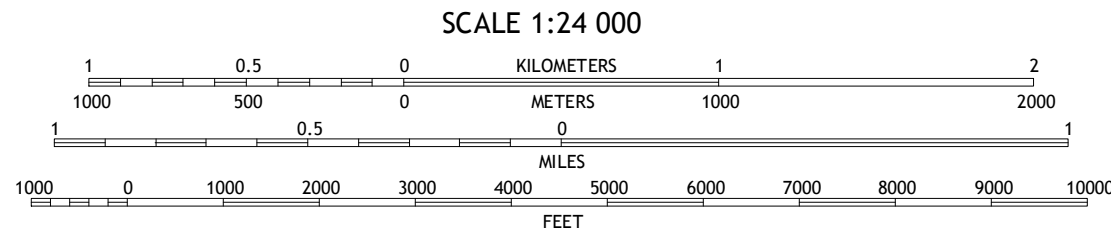
Produced by the United States Geological Survey
North American Datum of 1983 (NAD83)
World Geodetic System of 1984 (WGS84). Projection and
1 000-meter grid: Universal Transverse Mercator, Zone 11S
10 000-foot ticks: Nevada Coordinate System of 1983 (west
zone)

This map is not a legal document. Boundaries may be
generalized for this map scale. Private lands within government
reservations may not be shown. Obtain permission before
entering private lands.

Imagery.....NAIP, July 2013
Roads.....HERE, ©2013
Names.....GNIS, 2013
Hydrography.....National Hydrography Dataset, 2013
Contours.....National Elevation Dataset, 1999
Boundaries.....Multiple sources; see metadata file 1972 - 2014
Public Land Survey System.....BLM, 2011



| |
|---|
| U.S. National Grid 100,000-m Square ID |
| LE |
| Grid Zone Designation 11S |



CONTOUR INTERVAL 40 FEET
NORTH AMERICAN VERTICAL DATUM OF 1988

This map was produced to conform with the
National Geospatial Program US Topo Product Standard, 2011.
A metadata file associated with this product is draft version 0.6.18



QUADRANGLE LOCATION

| ROAD CLASSIFICATION | | | |
|---------------------|-----------------|-------------|--|
| Expressway | Local Connector | Local Road | |
| Secondary Hwy | Local Road | 4WD | |
| Ramp | US Route | State Route | |

| | | |
|---|---|---|
| 1 | 2 | 3 |
| 4 | 5 | 6 |
| 7 | 8 | 9 |

- 1 Sage Hen Spring
- 2 Bluewing Spring
- 3 Ragged Top Mountain SW
- 4 Black Warrior Peak
- 5 Jessup
- 6 Juniper Peak
- 7 Hot Springs Flat
- 8 Desert Peak

TELEPHONE WELL, NV
2014

