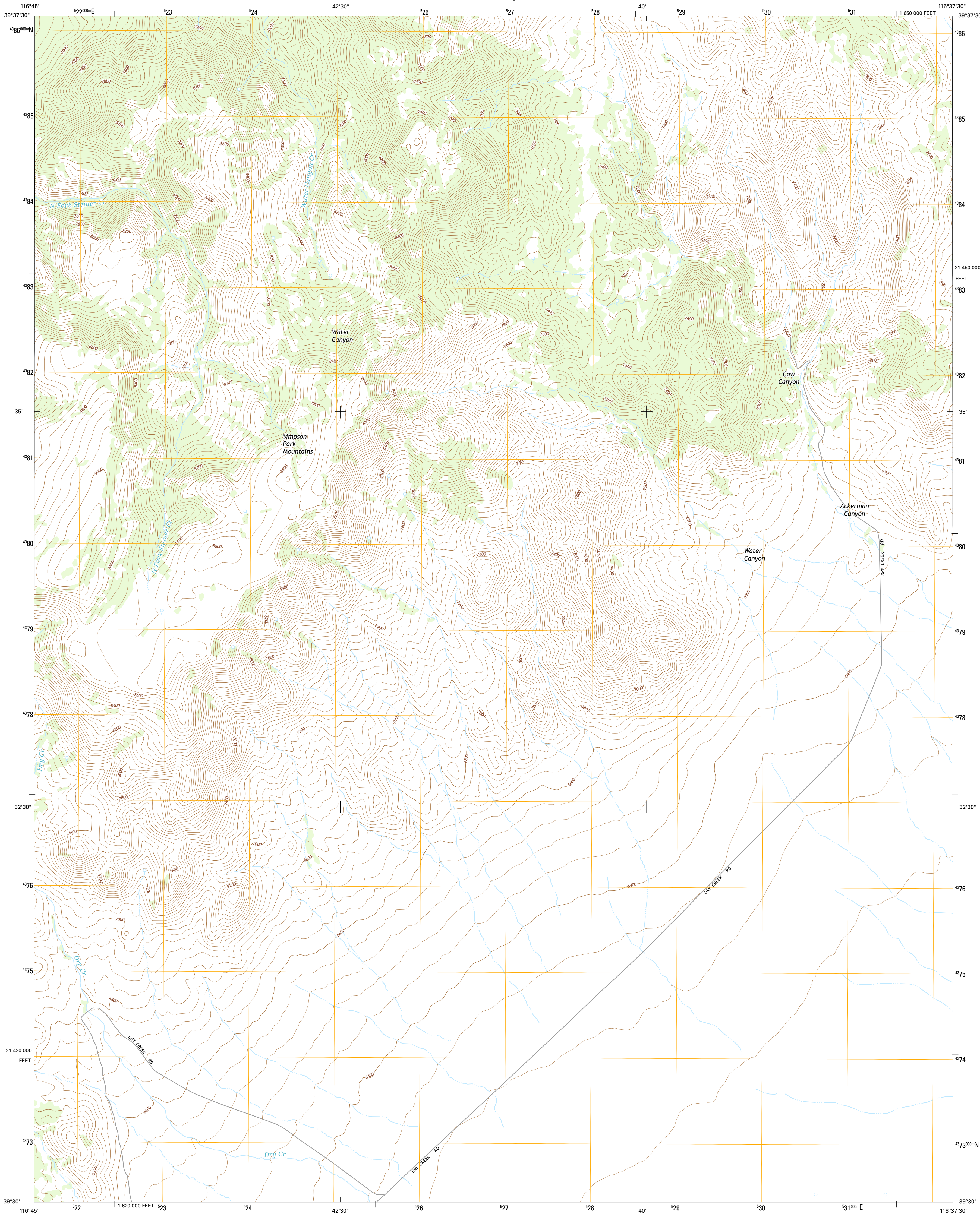




U.S. DEPARTMENT OF THE INTERIOR
U.S. GEOLOGICAL SURVEY



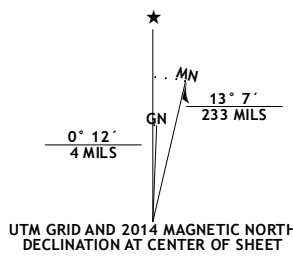
ACKERMAN CANYON QUADRANGLE
NEVADA-LANDER CO.
7.5-MINUTE SERIES



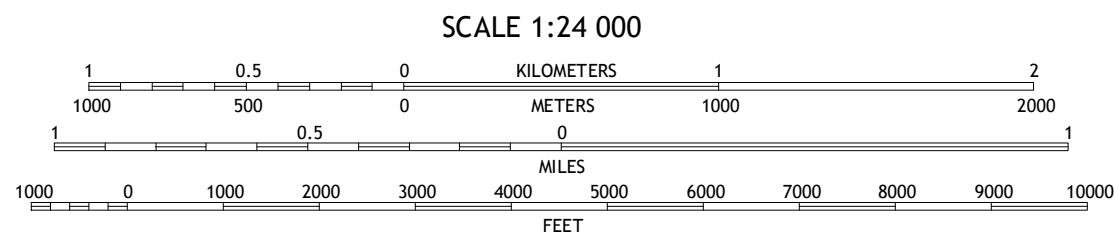
Produced by the United States Geological Survey
North American Datum of 1983 (NAD83)
World Geodetic System of 1984 (WGS84). Projection and
1 000-meter grid: Universal Transverse Mercator, Zone 11S
10 000-foot ticks: Nevada Coordinate System of 1983 (central
zone)

This map is not a legal document. Boundaries may be
generalized for this map scale. Private lands within government
reservations may not be shown. Obtain permission before
entering private lands.

Imagery.....NAIP, August 2013
Roads.....HERE, ©2013
Names.....GNIS, ©2013
Hydrography.....National Hydrography Dataset, 2013
Contours.....National Elevation Dataset, 2004
Boundaries.....Multiple sources; see metadata file 1972-2014
Public Land Survey System.....BLM, 2011



U.S. National Grid
100,000-m Square ID
ND
Grid Zone Designation
11S



CONTOUR INTERVAL 40 FEET
NORTH AMERICAN VERTICAL DATUM OF 1988

This map was produced to conform with the
National Geospatial Program US Topo Product Standard, 2011.
A metadata file associated with this product is draft version 0.6.18



QUADRANGLE LOCATION

ROAD CLASSIFICATION			
Expressway	Local Connector	Interstate Route	US Route
Secondary Hwy	Local Road		
Ramp	4WD		State Route

1	2	3
4	5	
6	7	8

ADJOINING QUADRANGLES

- 1 Grass Valley Ranch
- 2 Salt Marsh Canyon
- 3 Shagbush
- 4 Bates Mountain
- 5 Bean Flat West
- 6 Cape Horn
- 7 Hickson Summit
- 8 Jackrabbit Spring

ACKERMAN CANYON, NV
2014

