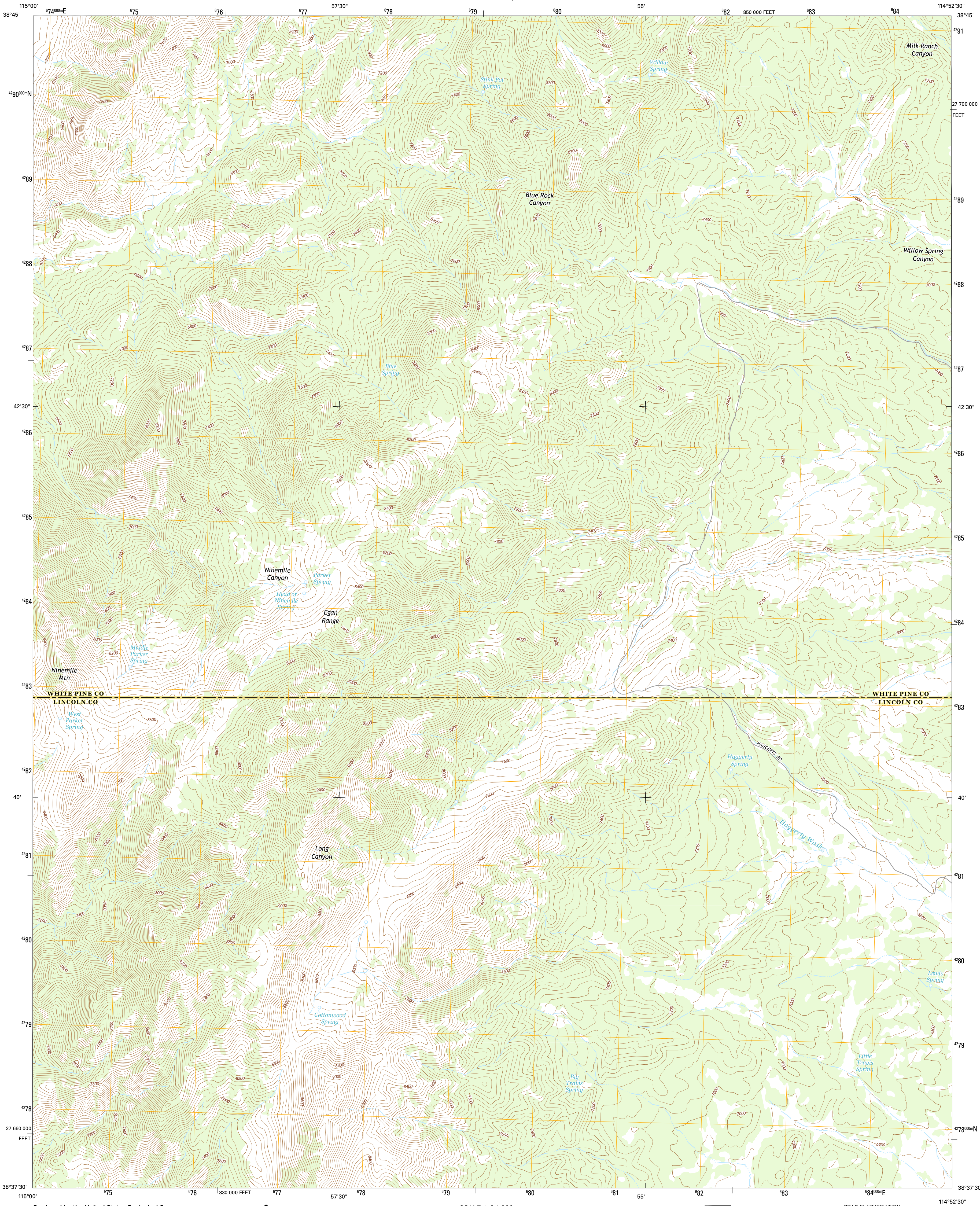




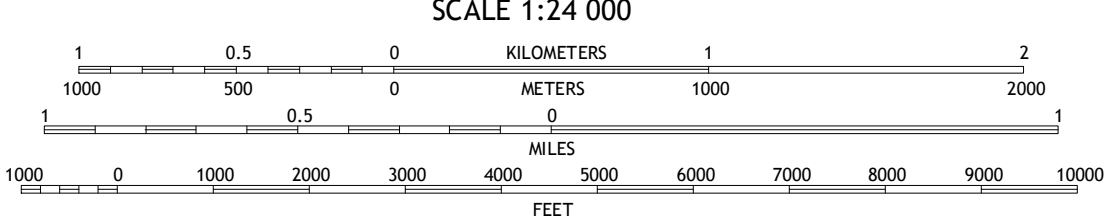
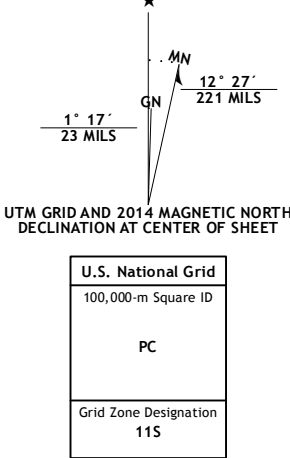
U.S. DEPARTMENT OF THE INTERIOR  
U.S. GEOLOGICAL SURVEY



HAGGERTY SPRING QUADRANGLE  
NEVADA  
7.5-MINUTE SERIES



Produced by the United States Geological Survey  
North American Datum of 1983 (NAD83)  
World Geodetic System of 1984 (WGS84). Projection and  
1 000-meter grid: Universal Transverse Mercator, Zone 11S  
10 000-foot ticks: Nevada Coordinate System of 1983 (east zone)  
  
This map is not a legal document. Boundaries may be  
generalized for this map scale. Private lands within government  
reservations may not be shown. Obtain permission before  
entering private lands.  
  
Imagery.....NAIP, August 2013 - September 2013  
Roads.....HERE, ©2013  
Names.....GNIS, 2013  
Hydrography.....National Hydrography Dataset, 2013  
Contours.....National Elevation Dataset, 2004  
Boundaries.....Multiple sources; see metadata file 1972 - 2014  
Public Land Survey System.....BLM, 2011



CONTOUR INTERVAL 40 FEET  
NORTH AMERICAN VERTICAL DATUM OF 1988  
  
This map was produced to conform with the  
National Geospatial Program US Topo Product Standard, 2011.  
A metadata file associated with this product is draft version 0.6.18

1	2	3	1 Lund
4	5	6	2 Brown Knoll
7	8	9	3 Bullwhack Summit
10	11	12	4 Hardy Springs
13	14	15	5 Parker Station
16	17	18	6 Moorman Spring SE
19	20	21	7 Shingle Pass
22	23	24	8 Shingle Pass SE

ROAD CLASSIFICATION  
Expressway  
Secondary Hwy  
Ramp  
Interstate Route  
Local Connector  
Local Road  
4WD  
US Route  
State Route  
  
HAGGERTY SPRING, NV  
2014

