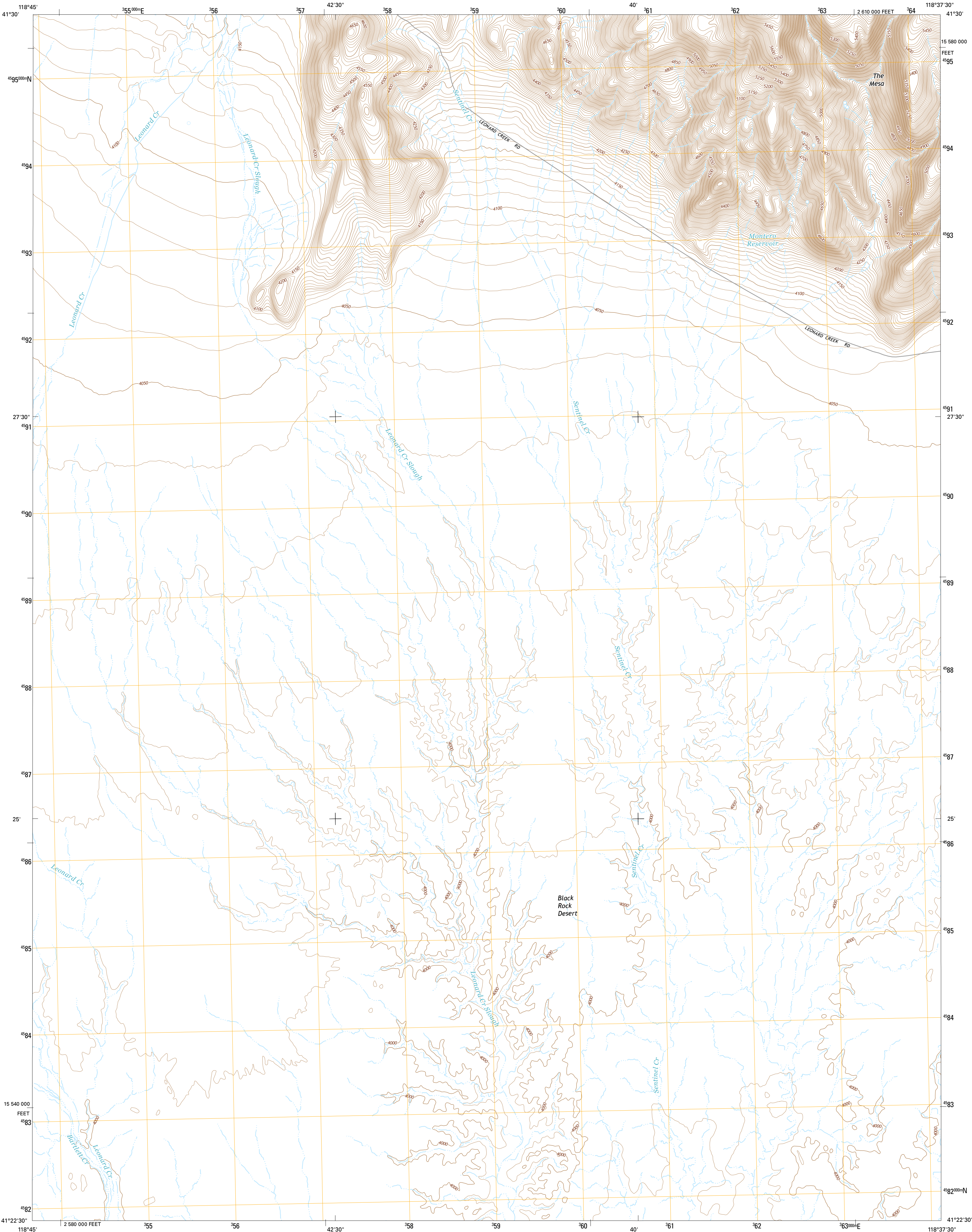




U.S. DEPARTMENT OF THE INTERIOR
U.S. GEOLOGICAL SURVEY



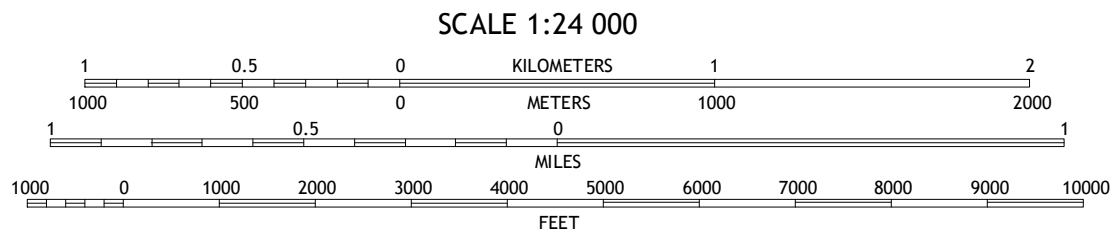
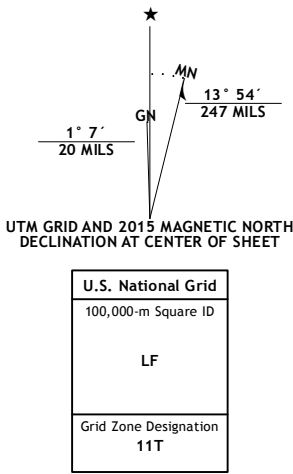
LEONARD CREEK SLOUGH NORTH QUADRANGLE
NEVADA-HUMBOLDT CO.
7.5-MINUTE SERIES



Produced by the United States Geological Survey
North American Datum of 1983 (NAD83)
World Geodetic System of 1984 (WGS84). Projection and
1 000-meter grid: Universal Transverse Mercator, Zone 11T
10 000-foot ticks: Nevada Coordinate System of 1983 (west
zone)

This map is not a legal document. Boundaries may be
generalized for this map scale. Private lands within government
reservations may not be shown. Obtain permission before
entering private lands.

Imagery.....NAIP, July 2013
Roads.....HERE, ©2013
Names.....GNIS, 2013
Hydrography.....National Hydrography Dataset, 2013
Contours.....National Elevation Dataset, 2001
Boundaries.....Multiple sources; see metadata file 1972 - 2014
Public Land Survey System.....BLM, 2011



ROAD CLASSIFICATION			
Expressway	Local Connector	Local Road	
Secondary Hwy		4WD	
Ramp			
Interstate Route	US Route	State Route	

1	2	3
4	5	
6	7	8

ADJOINING QUADRANGLES

1 New York Peak
2 Bishop Peak
3 Dyke Canyon
4 Battle Creek Ranch
5 Deer Creek Slough
6 Pinto Mountain
7 Leonard Creek Slough South
8 Hobo Canyon

LEONARD CREEK SLOUGH NORTH, NV
2015

