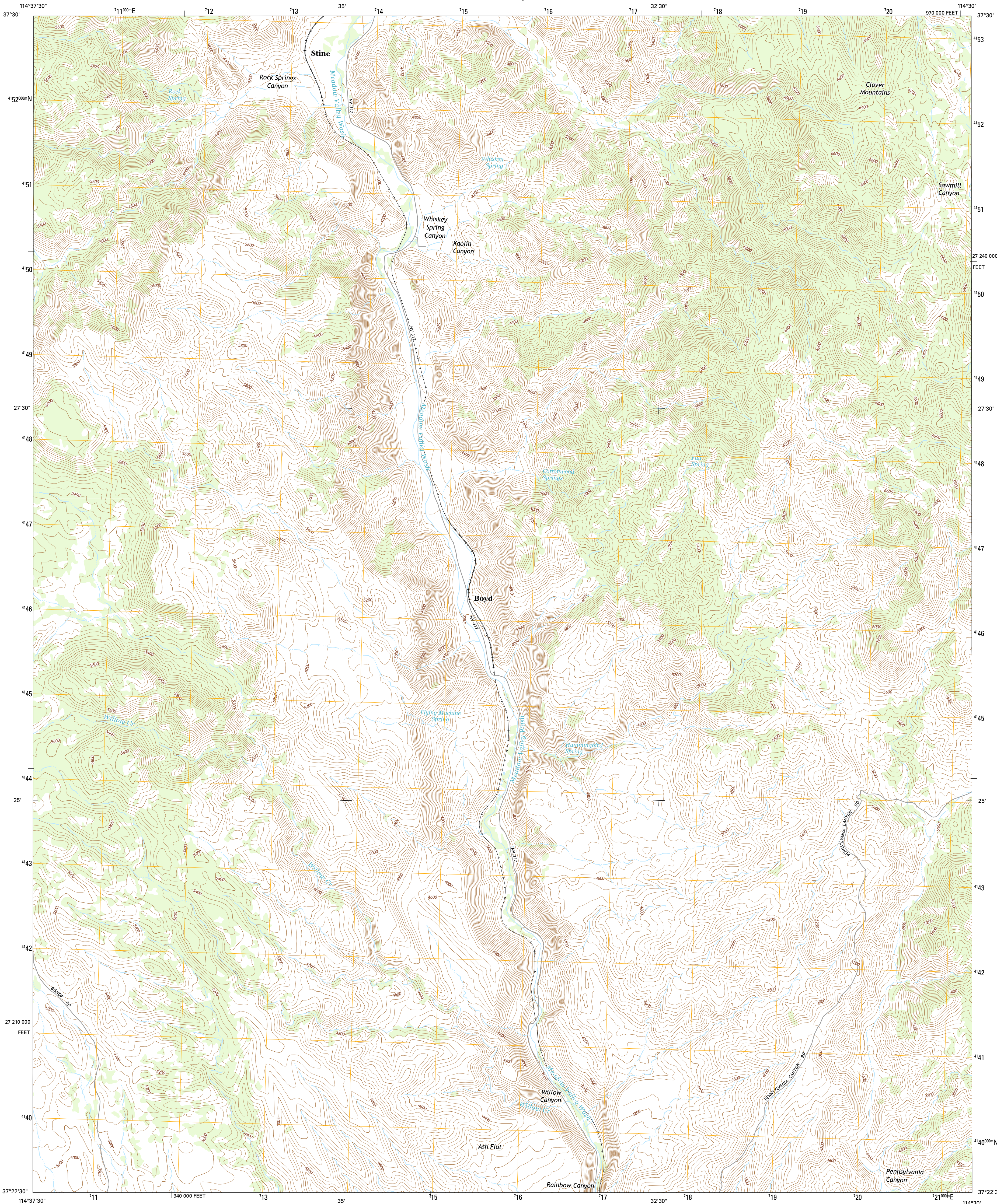




U.S. DEPARTMENT OF THE INTERIOR  
U.S. GEOLOGICAL SURVEY



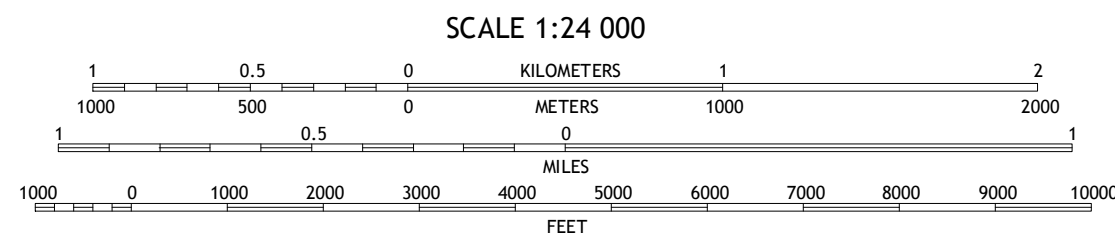
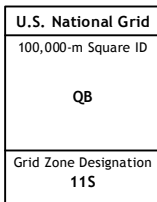
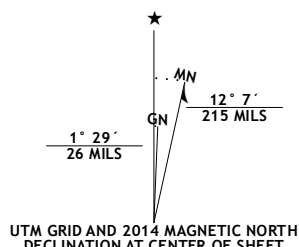
ELGIN NE QUADRANGLE  
NEVADA-LINCOLN CO.  
7.5-MINUTE SERIES



Produced by the United States Geological Survey  
North American Datum of 1983 (NAD83)  
World Geodetic System of 1984 (WGS84). Projection and  
1000-meter grid: Universal Transverse Mercator, Zone 11S  
10 000-foot ticks: Nevada Coordinate System of 1983 (east zone)

This map is not a legal document. Boundaries may be  
generalized for this map scale. Private lands within government  
reservations may not be shown. Obtain permission before  
entering private lands.

Imagery.....NAIP, September 2013  
Roads.....HERE, ©2013  
Names.....GNIS, 2013  
Hydrography.....National Hydrography Dataset, 2013  
Contours.....National Elevation Dataset, 2005  
Boundaries.....Multiple sources; see metadata file 1972 - 2014  
Public Land Survey System.....BLM, 2011



CONTOUR INTERVAL 40 FEET  
NORTH AMERICAN VERTICAL DATUM OF 1988

This map was produced to conform with the  
National Geospatial Program US Topo Product Standard, 2011.  
A metadata file associated with this product is draft version 0.6.18



ROAD CLASSIFICATION  
Expressway  
Secondary Hwy  
Ramp  
Interstate Route  
Local Connector  
Local Road  
4WD  
US Route  
State Route

1	2	3
4	5	6
7	8	9

ADJOINING QUADRANGLES

1 Chokecherry Mountain  
2 Caliente  
3 Eccles  
4 Slidy Mountain  
5 Ella Mountain  
6 Elgin SW  
7 Elgin  
8 Leith

ELGIN NE, NV  
2014

