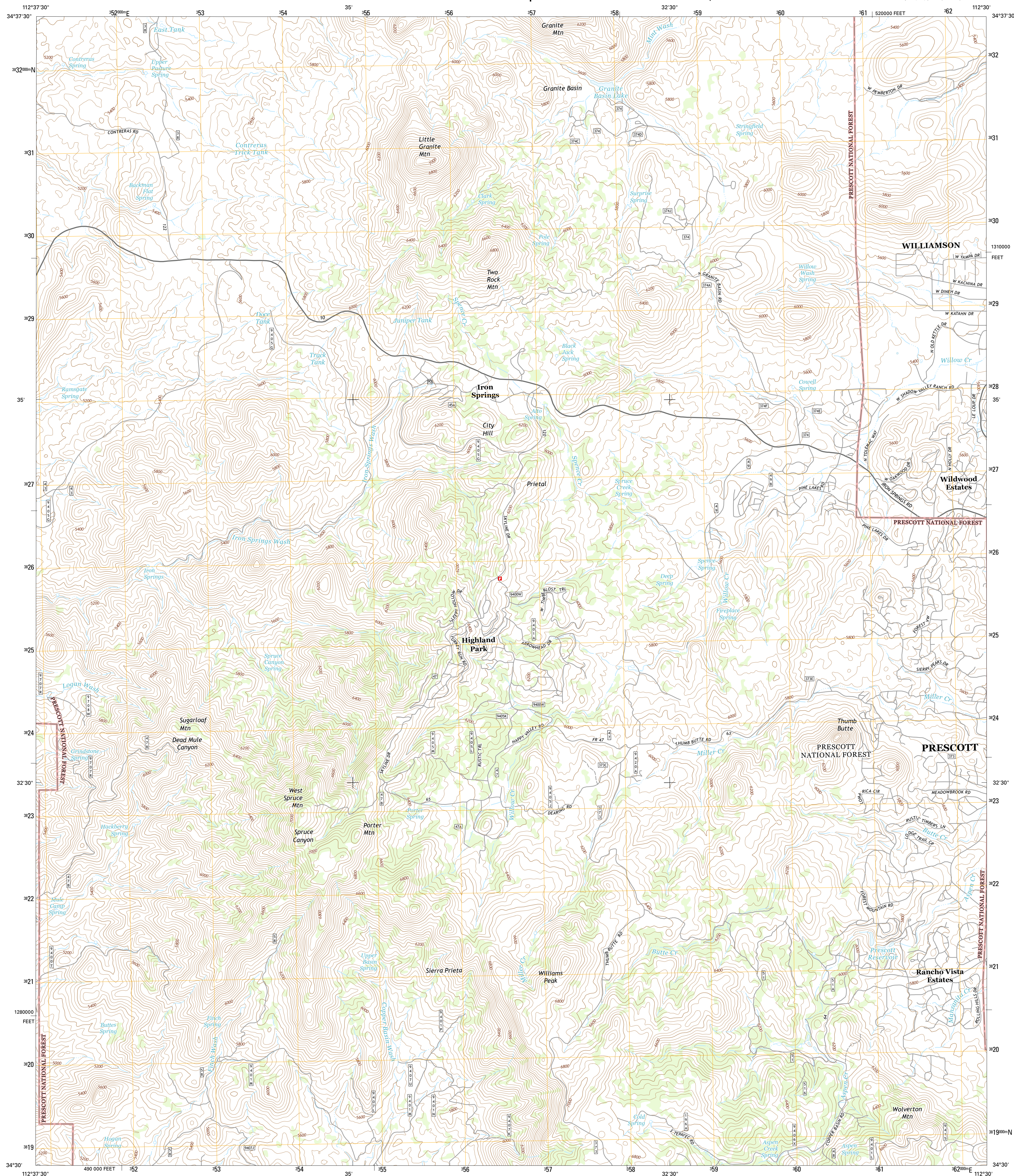




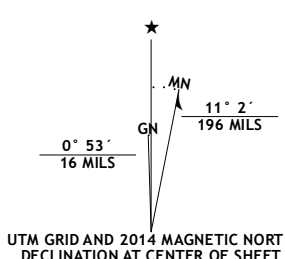
IRON SPRINGS QUADRANGLE
ARIZONA-YAVAPAI CO.
7.5-MINUTE SERIES



Produced by the United States Geological Survey
North American Datum of 1983 (NAD83)
World Geodetic System of 1984 (WGS84). Projection and
1 000-meter grid: Universal Transverse Mercator, Zone 12S
10 000-foot ticks: Arizona Coordinate System of 1983 (central
zone)

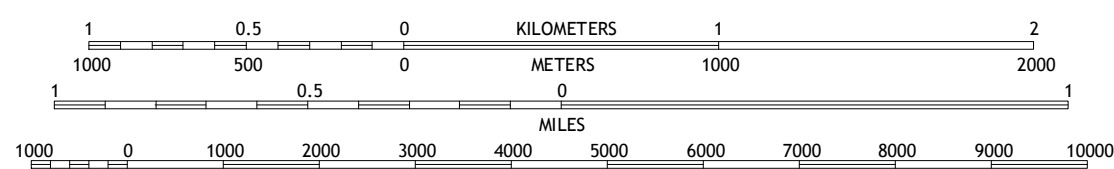
This map is not a legal document. Boundaries may be generalized for this map scale. Private lands within government reservations may not be shown. Obtain permission before entering private lands.

Imagery.....	NAIP, June 2013
Roads.....	HERE, ©2013
Roads within US Forest Service Lands.....	FSTopo Data
	with limited Forest Service updates, 2013
Names.....	GNIS, 2013
Hydrography.....	National Hydrography Dataset, 2013
Contours.....	National Elevation Dataset, 2002
Boundaries.....	Multiple sources; see metadata file 1972
Public Land Survey System.....	BLM, 2011



U.S. National Grid
100,000-m Square ID
UD
Grid Zone Designation
12S

SCALE 1:24 000



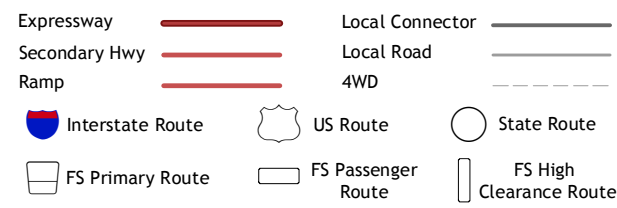
CONTOUR INTERVAL 40 FEET
NORTH AMERICAN VERTICAL DATUM OF 1988

This map was produced to conform with the
National Geospatial Program US Topo Product Standard, 2011.
A metadata file associated with this product is draft version 0.6.16



QUADRANGLE LOCATION

ROAD CLASSIFICATION



Check with local Forest Service unit
for current travel conditions and restrictions.

1	2	3	1 Mount Josh
4		5	2 Jerome Canyon
6	7	8	3 Chino Valley South
			4 Skull Valley
			5 Prescott
			6 Kirkland
			7 Withoit
			8 Groom Creek

ADJOINING QUADRANGLES

ADJOINING QUADRANGLE:

IRON SPRINGS, AZ
2014