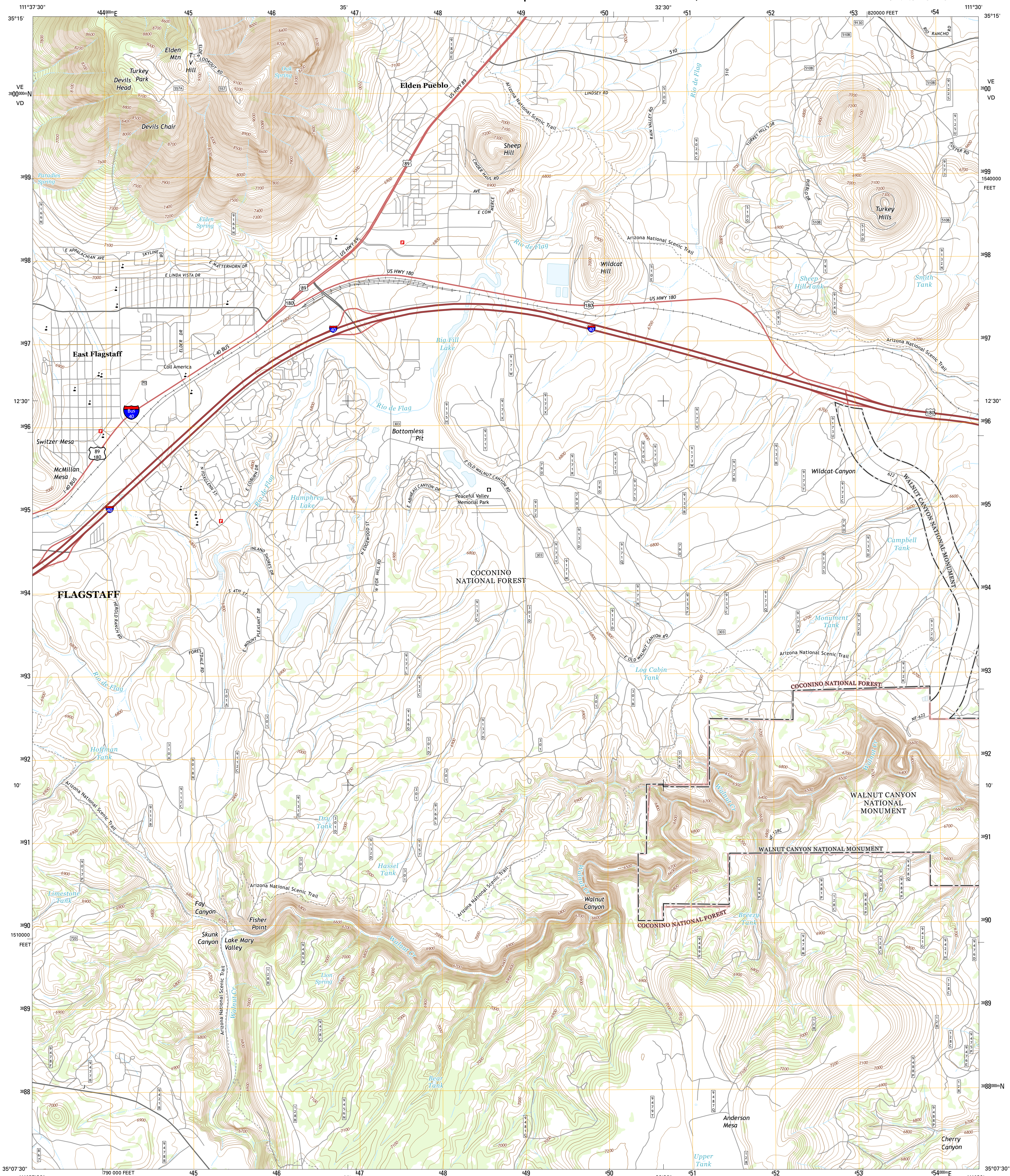




U.S. DEPARTMENT OF THE INTERIOR
U.S. GEOLOGICAL SURVEY



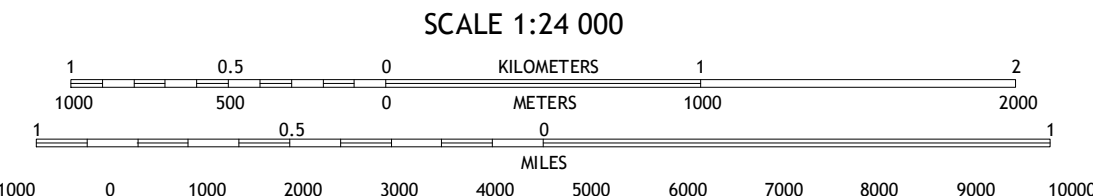
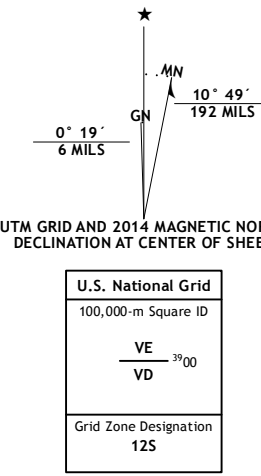
FLAGSTAFF EAST QUADRANGLE
ARIZONA-COCONINO CO.
7.5-MINUTE SERIES



Produced by the United States Geological Survey
North American Datum of 1983 (NAD83)
World Geodetic System of 1984 (WGS84) Projection and
1 000-meter grid: Universal Transverse Mercator, Zone 12S
10 000-foot ticks: Arizona Coordinate System of 1983 (central zone)

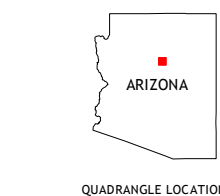
This map is not a legal document. Boundaries may be generalized for this map scale. Private lands within government reservations may not be shown. Obtain permission before entering private lands.

Imagery.....NAIP, June 2013
Roads.....HERE, ©2013
Roads within US Forest Service Lands.....FS Topo Data with limited Forest Service updates, 2013
Names.....GNIS, 2013
Hydrography.....National Hydrography Dataset, 2013
Contours.....National Elevation Dataset, 2000
Boundaries.....Multiple sources; see metadata file 1972-2014
Public Land Survey System.....BLM, 2011



CONTOUR INTERVAL 20 FEET
NORTH AMERICAN VERTICAL DATUM OF 1988

This map was produced to conform with the
National Geospatial Program US Topo Product Standard, 2011.
A metadata file associated with this product is draft version 0.6.16



ROAD CLASSIFICATION	
Expressway	Local Connector
Secondary Hwy	Local Road
Ramp	4WD
Interstate Route	US Route
FS Primary Route	FS Passenger Route
	FS High Clearance Route
	State Route

1	2	3
4	5	
6	7	8

- 1 Humphreys Peak
- 2 Sunset Crater West
- 3 Sunset Crater East
- 4 Flagstaff West
- 5 Winona
- 6 Mountainaire
- 7 Lower Lake Mary
- 8 Ashurst Lake

Check with local Forest Service unit for current travel conditions and restrictions.

FLAGSTAFF EAST, AZ
2014

