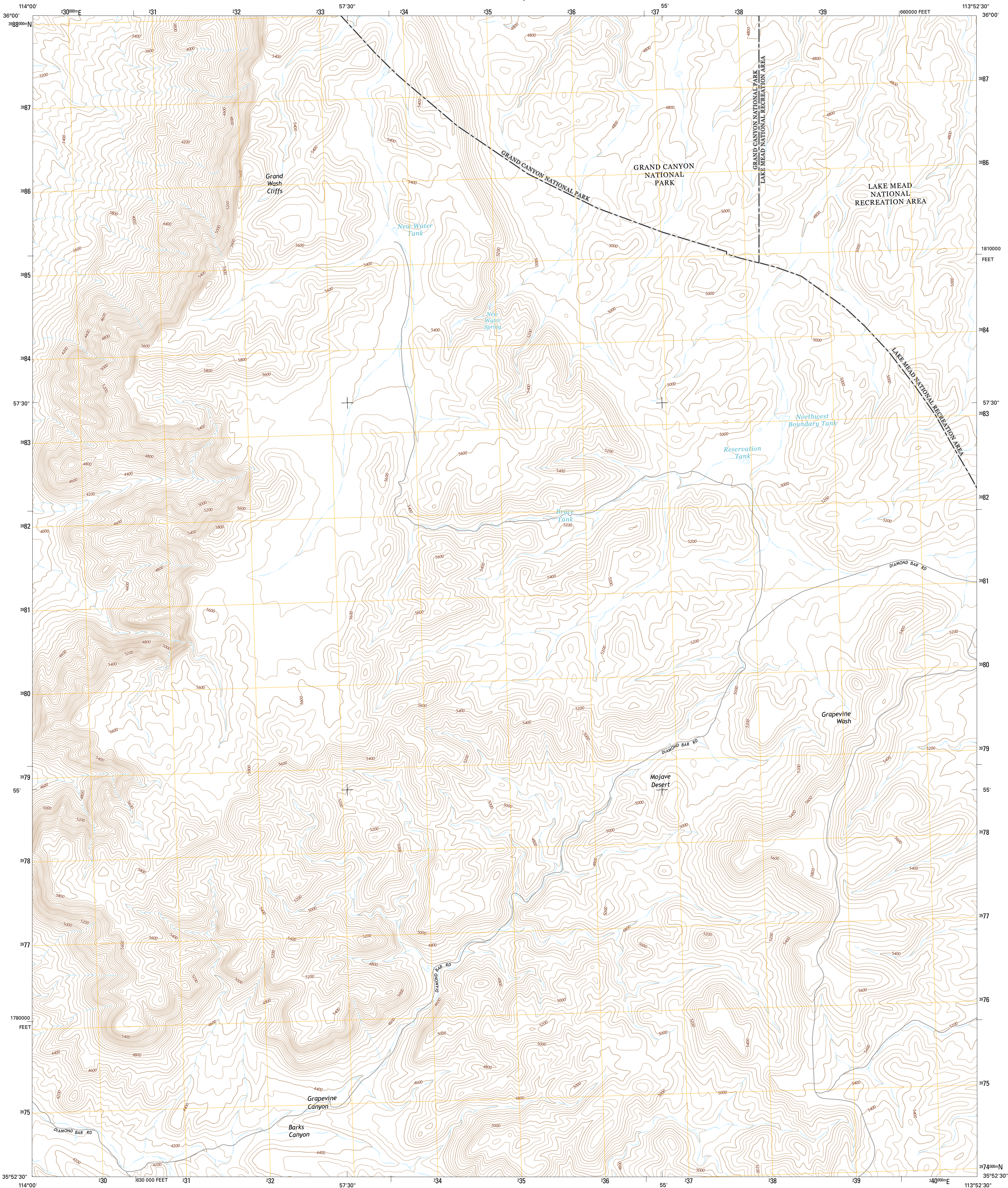




U.S. DEPARTMENT OF THE INTERIOR  
U.S. GEOLOGICAL SURVEY



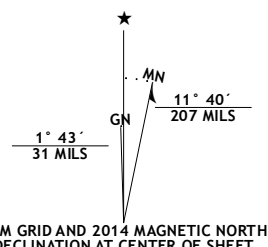
GRAPEVINE CANYON QUADRANGLE  
ARIZONA-MOHAVE CO.  
7.5-MINUTE SERIES



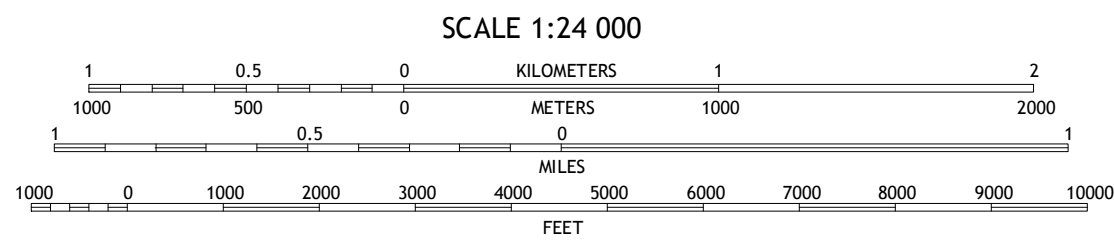
Produced by the United States Geological Survey  
North American Datum of 1983 (NAD83)  
World Geodetic System of 1984 (WGS84). Projection and  
1 000-meter grid: Universal Transverse Mercator, Zone 12S  
10 000-foot ticks: Arizona Coordinate System of 1983 (west  
zone)

This map is not a legal document. Boundaries may be  
generalized for this map scale. Private lands within government  
reservations may not be shown. Obtain permission before  
entering private lands.

Imagery.....NAIP, June 2013  
Roads.....HERE, ©2013  
Names.....GNIS, 2013  
Hydrography.....National Hydrography Dataset, 2013  
Contours.....National Elevation Dataset, 2000  
Boundaries.....Multiple sources; see metadata file 1972-2014  
Public Land Survey System.....BLM, 2011

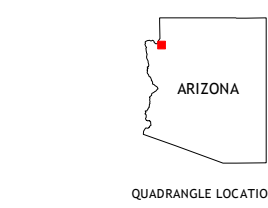


U.S. National Grid
100,000-m Square ID
TE
Grid Zone Designation
12S



CONTOUR INTERVAL 40 FEET  
NORTH AMERICAN VERTICAL DATUM OF 1988

This map was produced to conform with the  
National Geospatial Program US Topo Product Standard, 2011.  
A metadata file associated with this product is draft version 0.6.16



1	2	3
4	5	6
7	8	9

ADJOINING QUADRANGLES

- 1 Meadview North
- 2 Columbine Falls
- 3 Bat Cave
- 4 Meadview South
- 5 Quartermaster Canyon
- 6 Garnet Mountain
- 7 Quartermaster Canyon SW
- 8 Horse Flat

ROAD CLASSIFICATION	
Expressway	Local Connector
Secondary Hwy	Local Road
Interstate Route	4WD
US Route	State Route

GRAPEVINE CANYON, AZ  
2014

