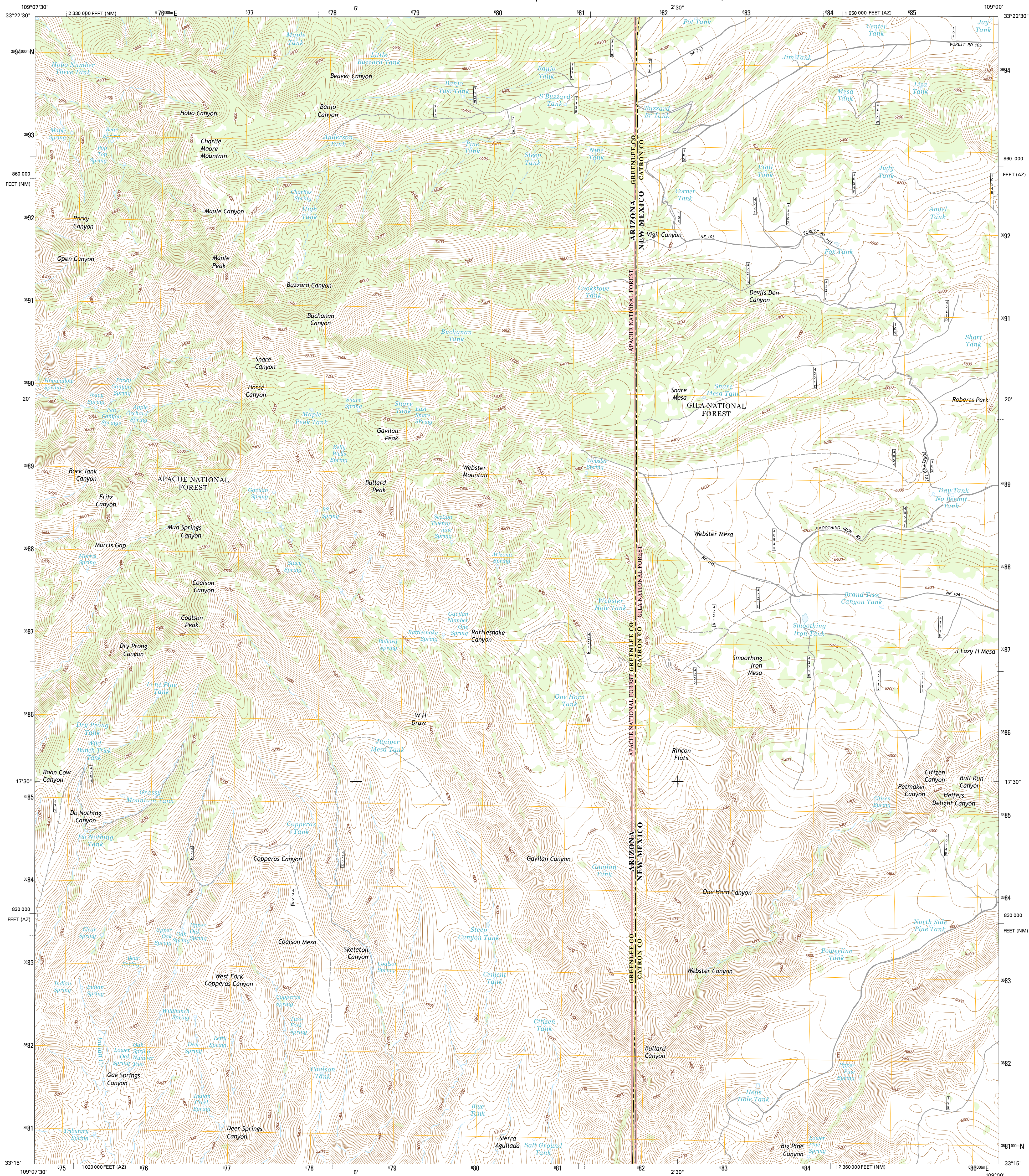




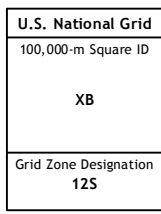
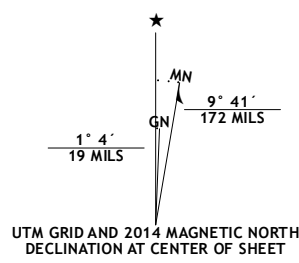
MAPLE PEAK QUADRANGLE
ARIZONA-NEW MEXICO
7.5-MINUTE SERIES



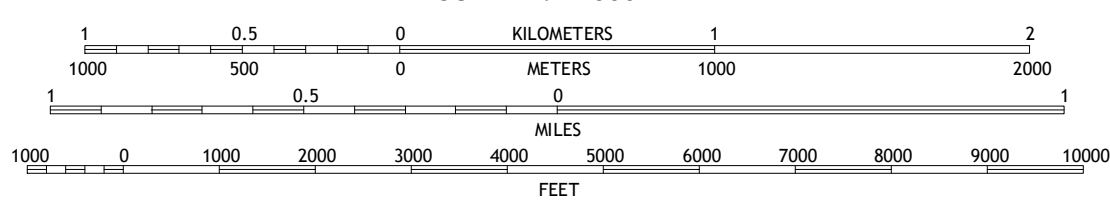
North American Datum of 1983 (NAD83)
World Geodetic System of 1984 (WGS84). Projection and
1 000-meter grid: Universal Transverse Mercator, Zone 12S
10 000-foot ticks: Arizona Coordinate System of 1983 (east
zone), New Mexico Coordinate System of 1983 (west zone)

This map is not a legal document. Boundaries may be generalized for this map scale. Private lands within government reservations may not be shown. Obtain permission before entering private lands.

Imagery.....	NAIP, June 2013
Roads.....	HERE, ©2013
Roads within US Forest Service Lands.....	FSTopo Data
	with limited Forest Service updates, 2013
Names.....	GNIS, 2013
Hydrography.....	National Hydrography Dataset, 2001
Contours.....	National Elevation Dataset, 2003
Boundaries.....	Multiple sources; see metadata file 1972 - 2014
Public Land Survey System.....	BLM, 2011



SCALE 1:24 000

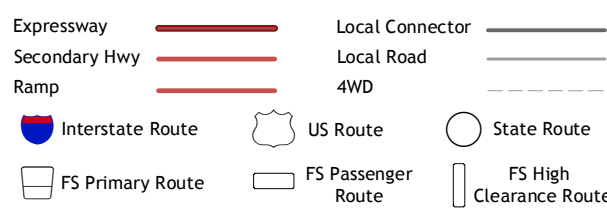


CONTOUR INTERVAL 40 FEET
NORTH AMERICAN VERTICAL DATUM OF 1988

This map was produced to conform with the
National Geospatial Program US Topo Product Standard, 2011.
A metadata file associated with this product is draft version 0.6.16



ROAD CLASSIFICATION



Check with local Forest Service unit
for current travel conditions and restrictions:

1	2	3	1 Dutch Blue Creek
4		5	2 Alma Mesa
6	7	8	3 Alma
			4 Fritz Canyon
			5 Glenwood
			6 Dix Creek
			7 Harden Cienega
			8 Wilson Mountain

ADJOINING QUADRANGLES

MAPLE PEAK, AZ-NM
2014