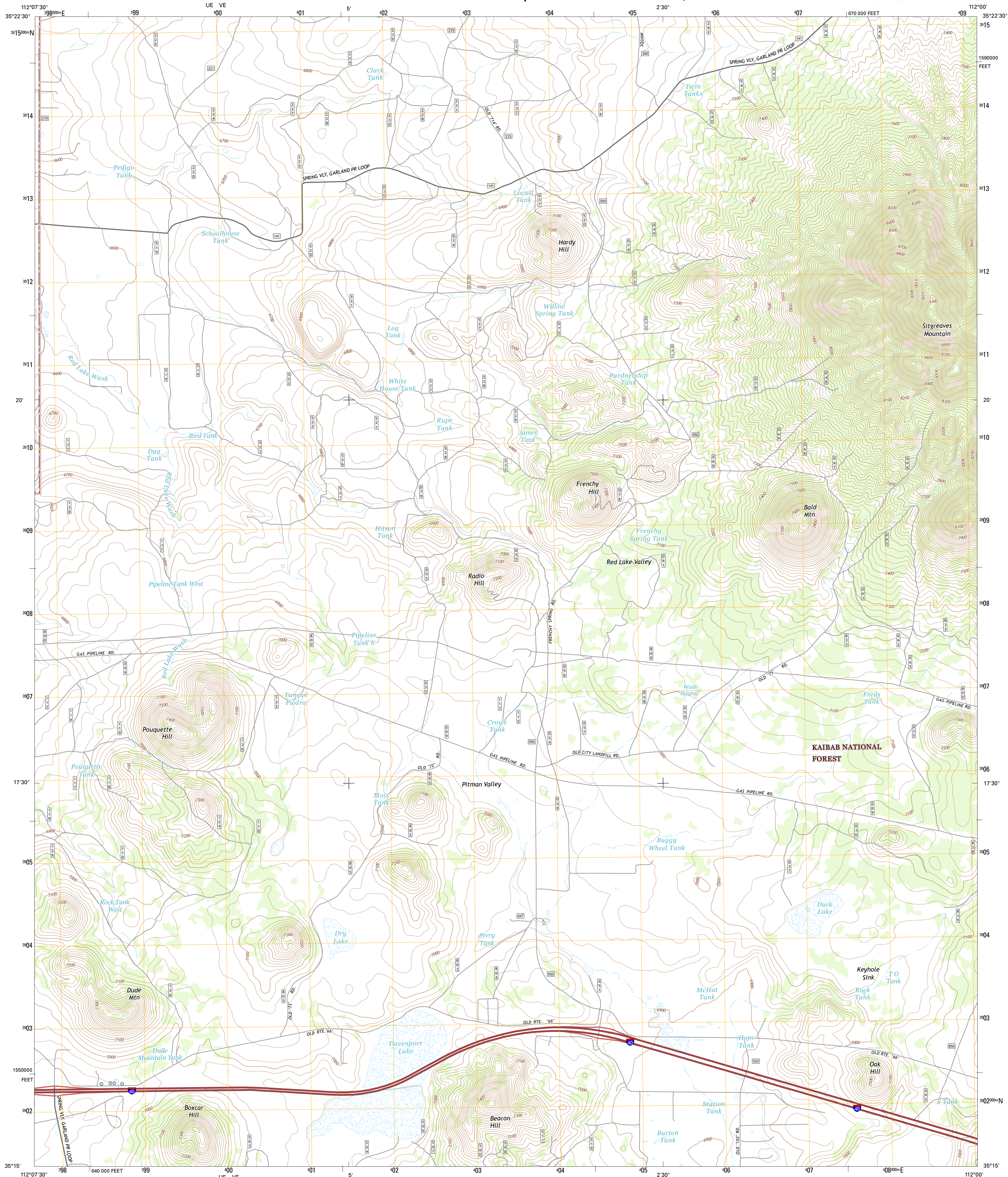




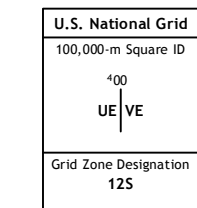
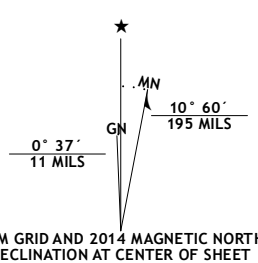
SITGREAVES MOUNTAIN QUADRANGLE
ARIZONA-COCONINO CO.
7.5-MINUTE SERIES



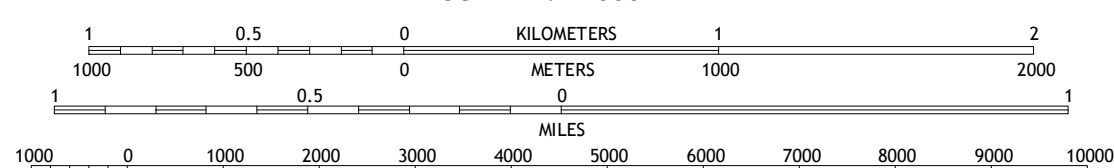
Produced by the United States Geological Survey
North American Datum of 1983 (NAD83)
World Geodetic System of 1984 (WGS84). Projection and
1 000-meter grid: Universal Transverse Mercator, Zone 12S
10 000-foot ticks: Arizona Coordinate System of 1983 (central
zone)

This map is not a legal document. Boundaries may be generalized for this map scale. Private lands within government reservations may not be shown. Obtain permission before entering private lands.

Imagery.....	NAIP, June	2013
Roads.....	HERE,	©2013
Roads within US Forest Service Lands.....	FSTopo	Data
	with limited Forest Service updates,	
Names.....	GNIS,	2013
Hydrography.....	National Hydrography Dataset,	2003
Contours.....	National Elevation Dataset,	2000
Boundaries.....	Multiple sources; see metadata file 972	1972 - 2011
Public Land Survey System.....	BLM,	2011



SCALE 1:24 000



CONTOUR INTERVAL 20 FEET
NORTH AMERICAN VERTICAL DATUM OF 1988

This map was produced to conform with the
National Geospatial Program US Topo Product Standard, 2011.
A metadata file associated with this product is draft version 0.6.18








QUADRANGLE LOCATION

1	2	3
4		5
6	7	8

ADJOINING QUADRANGLES

- 1 Howard Mesa
- 2 Squaw Mountain
- 3 Moritz Ridge
- 4 Williams North
- 5 Parks
- 6 Williams South
- 7 Davenport Hill
- 8 Garland Prairie

ROAD CLASSIFICATION

Expressway		Local Cor
Secondary Hwy		Local Roa
Ramp		4WD
 Interstate Route	 US Route	
 FS Primary Route	 FS Passenger Route	

Check with local Forest Service unit
for current travel conditions and restrictions.

SITGREAVES MOUNTAIN, AZ
2014

