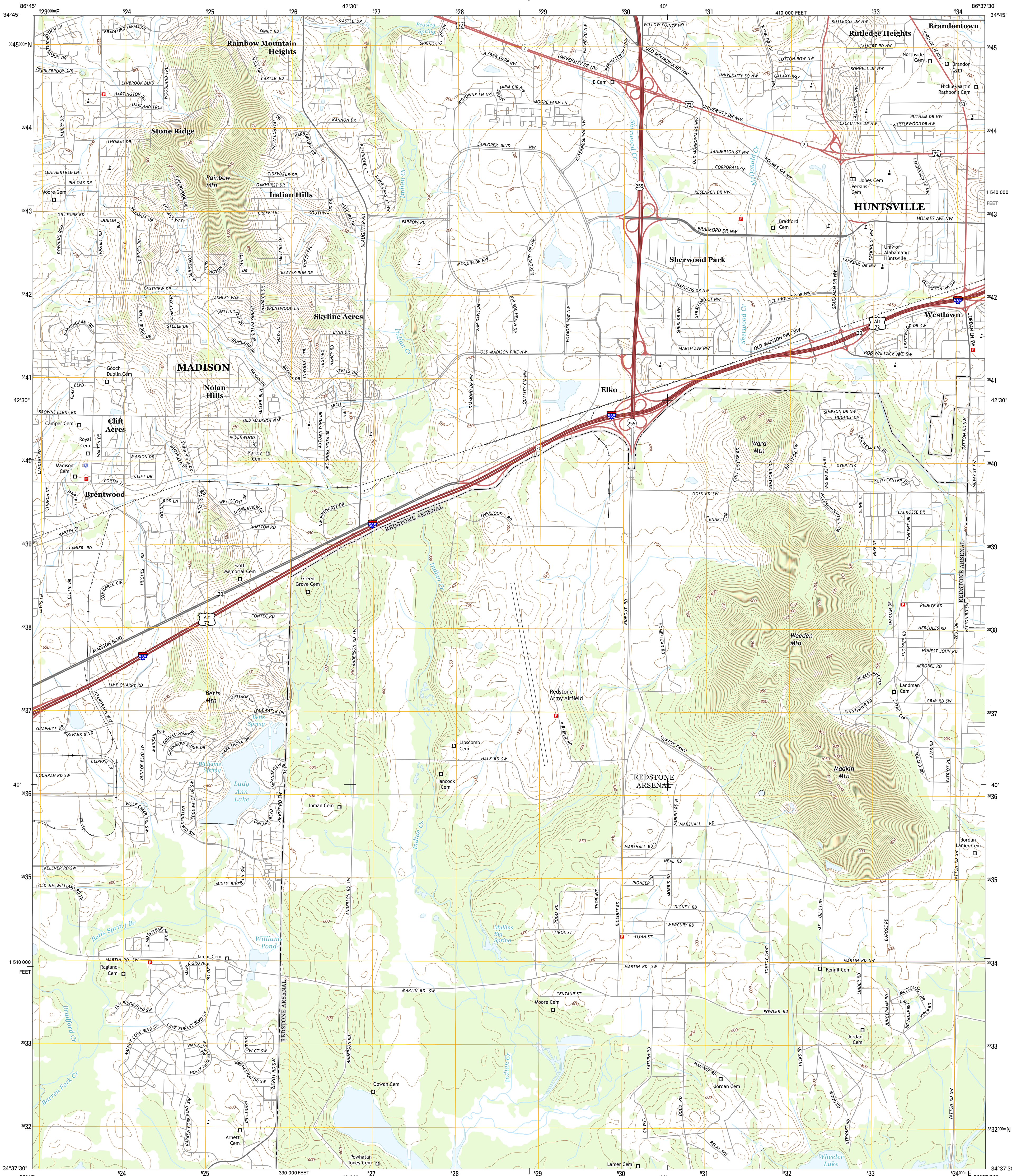




U.S. DEPARTMENT OF THE INTERIOR
U.S. GEOLOGICAL SURVEY



MADISON QUADRANGLE
ALABAMA-MADISON CO.
7.5-MINUTE SERIES



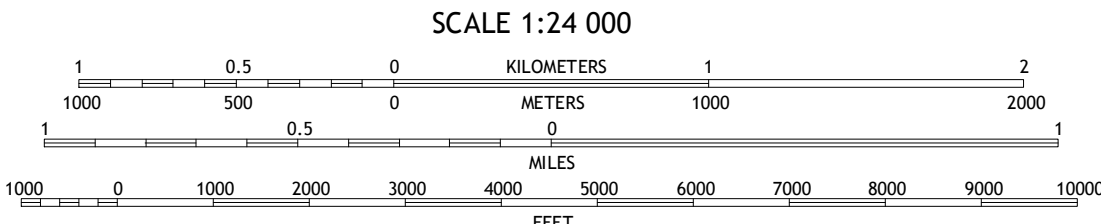
Produced by the United States Geological Survey
North American Datum of 1983 (NAD83)
World Geodetic System of 1984 (WGS84). Projection and
1 000-meter grid: Universal Transverse Mercator, Zone 16S
10 000-foot ticks: Alabama Coordinate System of 1983 (east
zone)

This map is not a legal document. Boundaries may be
generalized for this map scale. Private lands within government
reservations may not be shown. Obtain permission before
entering private lands.

Imagery.....NAIP, December 2013
Roads.....HERE, ©2013
Names.....GNIS, 2013
Hydrography.....National Hydrography Dataset, 2013
Contours.....National Elevation Dataset, 2004
Boundaries.....Multiple sources; see metadata file 1972 - 2013

UTM GRID AND 2014 MAGNETIC NORTH
DECLINATION AT CENTER OF SHEET

U.S. National Grid
100,000-m Square ID
ED
Grid Zone Designation
16S



CONTOUR INTERVAL 10 FEET
NORTH AMERICAN VERTICAL DATUM OF 1988

This map was produced to conform with the
National Geospatial Program US Topo Product Standard, 2011.
A metadata file associated with this product is draft version 0.6.16



QUADRANGLE LOCATION

1	2	3
4	5	6
7	8	9

ADJOINING QUADRANGLES

ROAD CLASSIFICATION

Expressway
Secondary Hwy
Ramp

Local Connector
Local Road
4WD
US Route
State Route

1 Capshaw
2 Jeff
3 Meridianville
4 Greenbrier
5 Huntsville
6 Madison Ridge
7 Triana
8 Farley

MADISON, AL
2014

