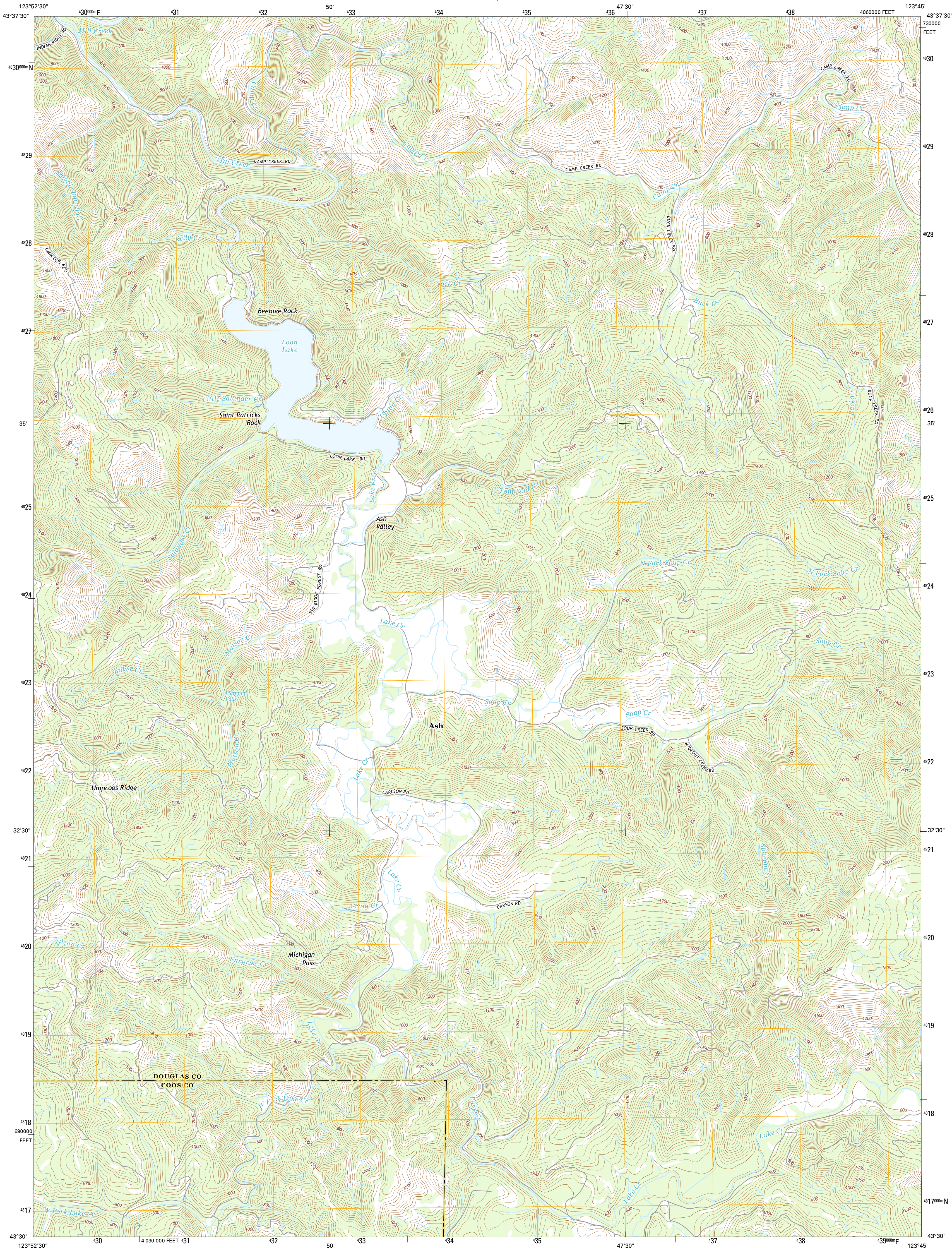




U.S. DEPARTMENT OF THE INTERIOR  
U.S. GEOLOGICAL SURVEY



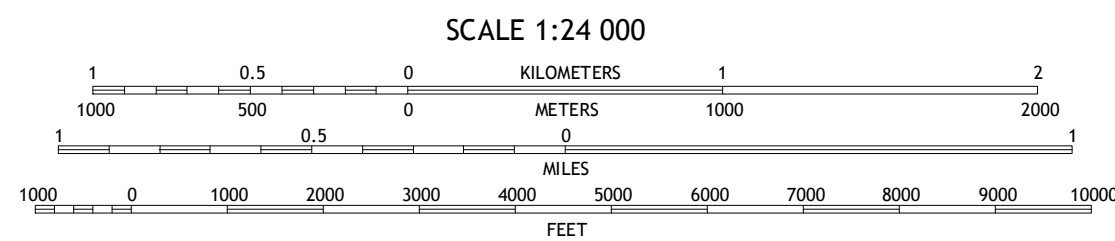
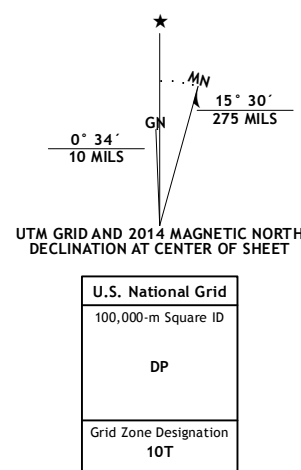
LOON LAKE QUADRANGLE  
OREGON  
7.5-MINUTE SERIES



**Produced by the United States Geological Survey**  
North American Datum of 1983 (NAD83)  
World Geodetic System of 1984 (WGS84). Projection and  
1 000-meter grid: Universal Transverse Mercator, Zone 10T  
10 000-foot ticks: Oregon Coordinate System of 1983 (south  
zone)

This map is not a legal document. Boundaries may be  
generalized for this map scale. Private lands within government  
reservations may not be shown. Obtain permission before  
entering private lands.

Imagery.....NAIP, June 2012 - July 2012  
Roads.....HERE, ©2013  
Names.....GNIS, 2013  
Hydrography.....National Hydrography Dataset, 2012  
Contours.....National Elevation Dataset, 1999  
Boundaries.....Multiple sources; see metadata file 1972 - 2013  
Public Land Survey System.....BLM, 2011



CONTOUR INTERVAL 40 FEET  
NORTH AMERICAN VERTICAL DATUM OF 1988  
This map was produced to conform with the  
National Geospatial Program US Topo Product Standard, 2011.  
A metadata file associated with this product is draft version 0.6.16



**ROAD CLASSIFICATION**  
Expressway  
Secondary Hwy  
Ramp  
Interstate Route  
Local Connector  
Local Road  
4WD  
US Route  
State Route

1	2	3
4	5	6
7	8	9

ADJOINING QUADRANGLES

1 Deer Head Point  
2 Scottsburg  
3 Devils Graveyard  
4 Elk Peak  
5 Old Blue  
6 Golden Falls  
7 Ivers Peak  
8 Kelly Butte

LOON LAKE, OR  
2014

