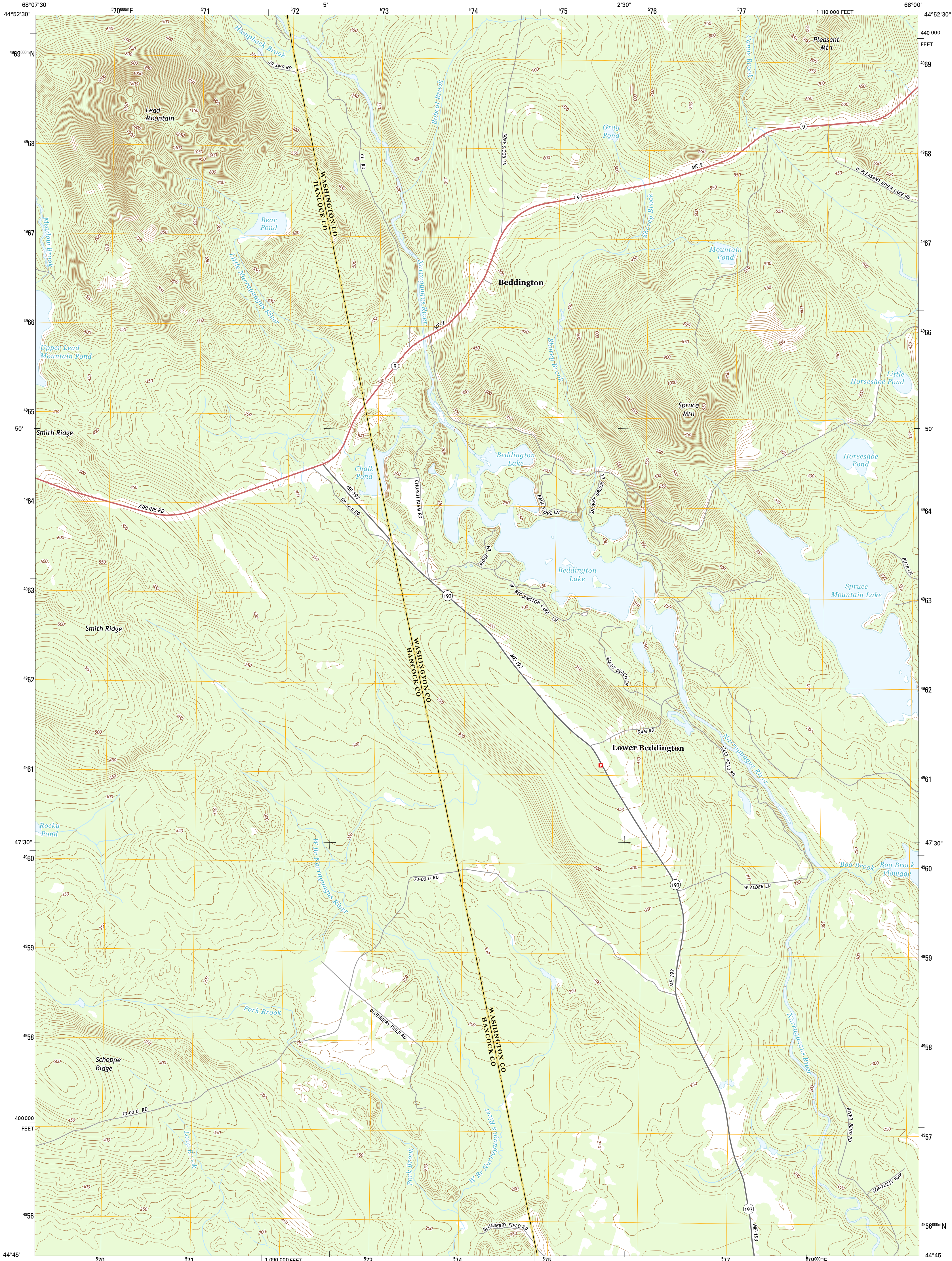




U.S. DEPARTMENT OF THE INTERIOR
U.S. GEOLOGICAL SURVEY



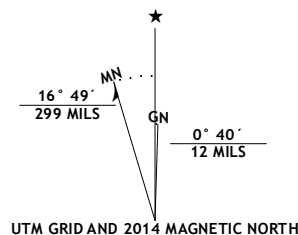
LEAD MOUNTAIN QUADRANGLE
MAINE
7.5-MINUTE SERIES



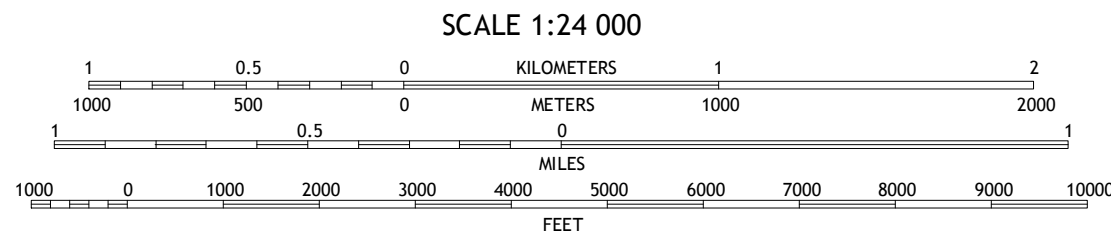
Produced by the United States Geological Survey
North American Datum of 1983 (NAD83)
World Geodetic System of 1984 (WGS84). Projection and
1 000-meter grid: Universal Transverse Mercator, Zone 19T
10 000-foot ticks: Maine Coordinate System of 1983 (east zone)

This map is not a legal document. Boundaries may be
generalized for this map scale. Private lands within government
reservations may not be shown. Obtain permission before
entering private lands.

Imagery.....NAIP, October 2013
Roads.....HERE, ©2013
Names.....GNIS, 2013
Hydrography.....National Hydrography Dataset, 2013
Contours.....National Elevation Dataset, 2008
Boundaries.....Multiple sources; see metadata file 1972 - 2013



U.S. National Grid 100,000-m Square ID
EK
Grid Zone Designation 19T



CONTOUR INTERVAL 10 FEET
NORTH AMERICAN VERTICAL DATUM OF 1988
This map was produced to conform with the
National Geospatial Program US Topo Product Standard, 2011.
A metadata file associated with this product is draft version 0.6.16



QUADRANGLE LOCATION

1	2	3	1 Alligator Lake
4		5	2 Quillpig Mountain
6	7	8	3 Peaked Mountain
			4 Rocky Pond
			5 Northeast Bluff
			6 Molasses Pond
			7 Tunk Mountain
			8 Schoodic Lake

ADJOINING QUADRANGLES

ROAD CLASSIFICATION	
Expressway	Local Connector
Secondary Hwy	Local Road
Ramp	4WD
Interstate Route	US Route
	State Route

LEAD MOUNTAIN, ME
2014

