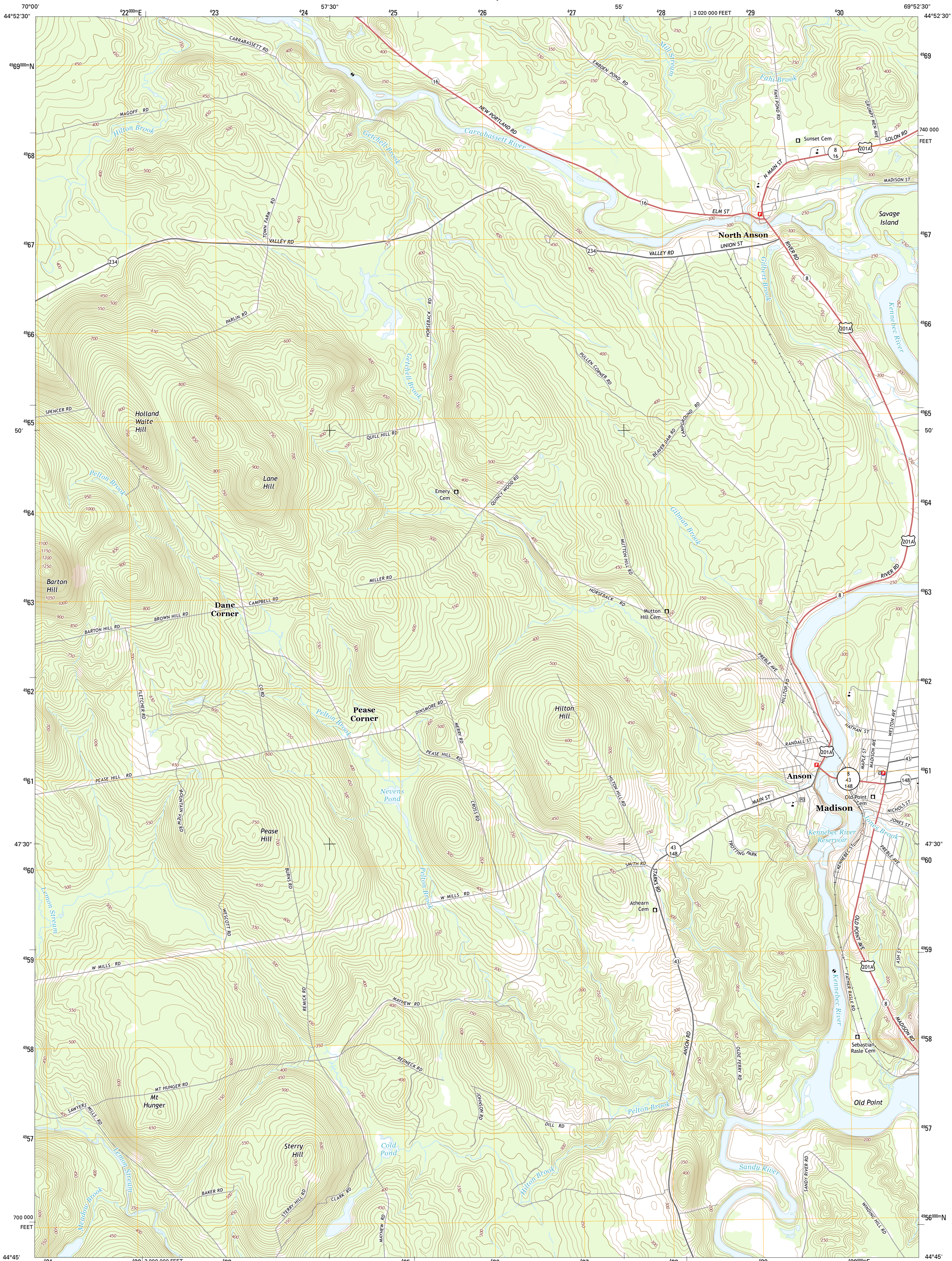




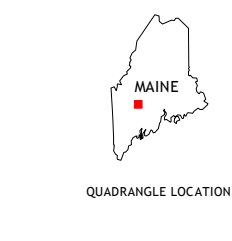
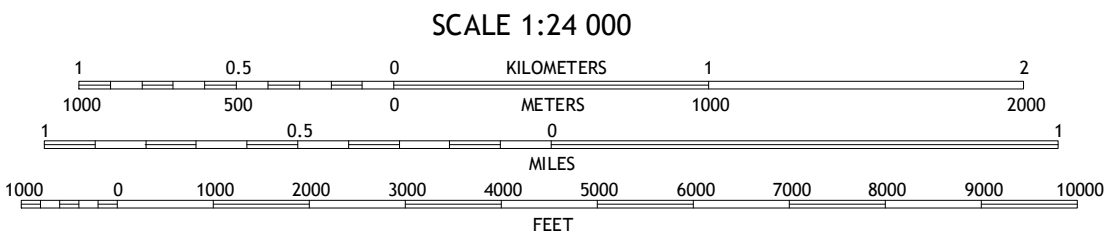
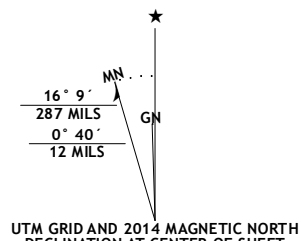
U.S. DEPARTMENT OF THE INTERIOR
U.S. GEOLOGICAL SURVEY



MADISON WEST QUADRANGLE
MAINE-SOMERSET CO.
7.5-MINUTE SERIES



Produced by the United States Geological Survey
North American Datum of 1983 (NAD83)
World Geodetic System of 1984 (WGS84). Projection and
1 000-meter grid: Universal Transverse Mercator, Zone 19T
10 000-foot ticks: Maine Coordinate System of 1983 (west zone)
This map is not a legal document. Boundaries may be
generalized for this map scale. Private lands within government
reservations may not be shown. Obtain permission before
entering private lands.



ROAD CLASSIFICATION			
Expressway	Local Connector	Local Road	
Secondary Hwy	4WD		
Ramp			
Interstate Route	US Route	State Route	

1	2	3
4	5	6
7	8	

ADJOINING QUADRANGLES

1 New Portland
2 Embden Pond
3 Solon
4 New Vineyard
5 Madison East
6 New Sharon
7 Mercer
8 Norridgewock

MADISON WEST, ME
2014

