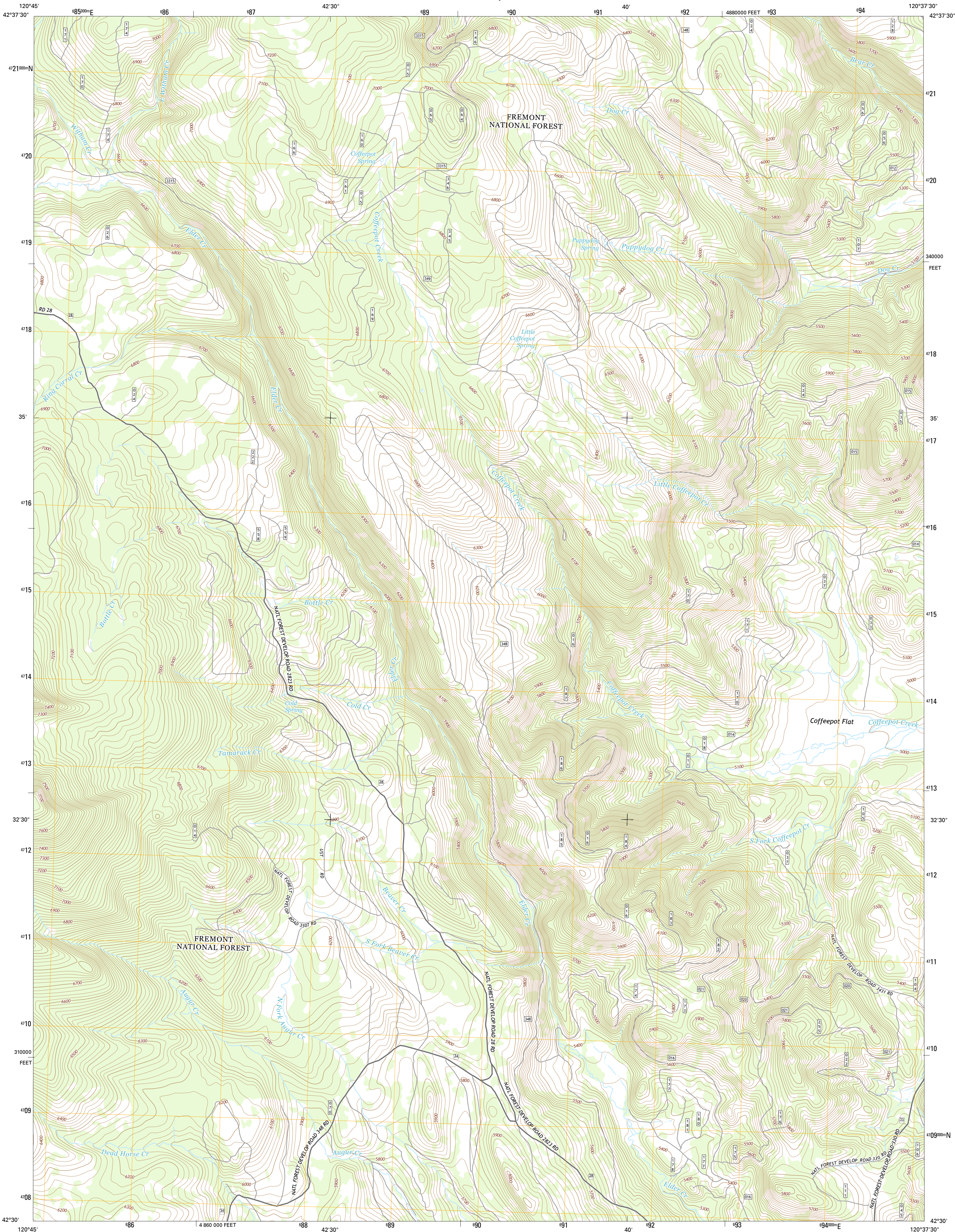




U.S. DEPARTMENT OF THE INTERIOR
U.S. GEOLOGICAL SURVEY



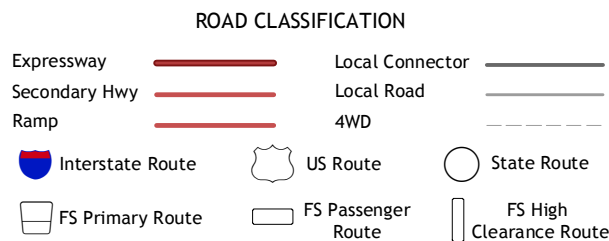
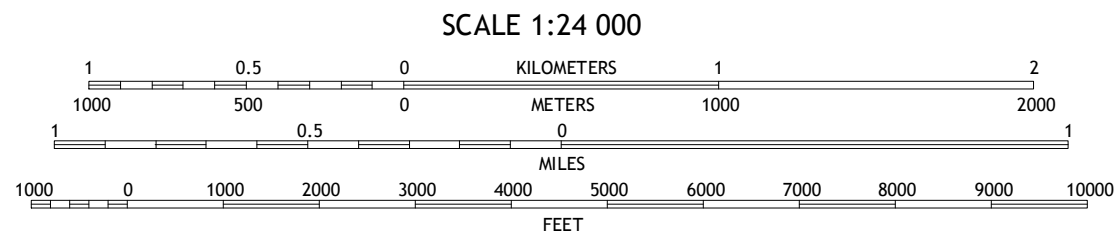
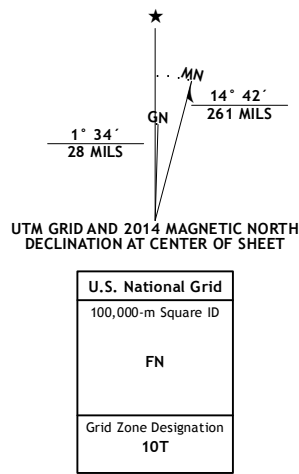
COFFEEPOT CREEK QUADRANGLE
OREGON-LAKE CO.
7.5-MINUTE SERIES



Produced by the United States Geological Survey
North American Datum of 1983 (NAD83)
World Geodetic System of 1984 (WGS84), Projection and
1 000-meter grid; Universal Transverse Mercator, Zone 10T
10 000-foot ticks: Oregon Coordinate System of 1983 (south zone)

This map is not a legal document. Boundaries may be generalized for this map scale. Private lands within government reservations may not be shown. Obtain permission before entering private lands.

Imagery.....NAIP, July 2012
Roads.....HERE, ©2013
Roads within US Forest Service Lands.....FSTopo Data with limited Forest Service updates, 2013
Names.....National Hydrography Dataset, 2012
Hydrography.....National Hydrography Dataset, 2012
Contours.....National Elevation Dataset, 1999
Boundaries.....Multiple sources; see metadata file 1972 - 2013
Public Land Survey System.....BLM, 2011



1	2	3
4	5	6
7	8	9

ADJOINING QUADRANGLES

1 Harvey Creek
2 Slide Mountain
3 Paisley
4 Lee Thomas Crossing
5 Morgan Butte
6 Gearhart Mountain
7 Coleman Point
8 Shoestring Butte

COFFEEPOT CREEK, OR
2014

