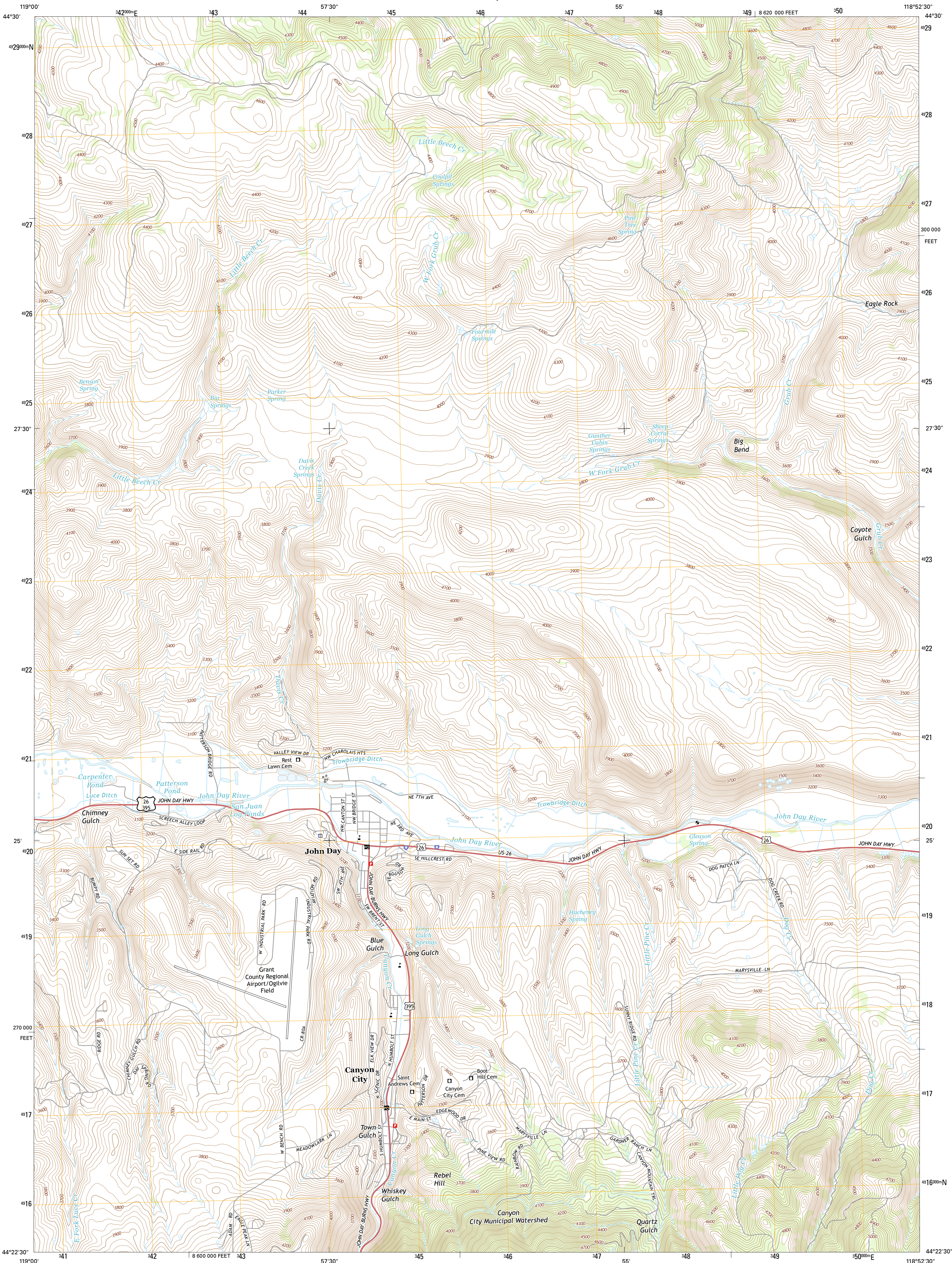




U.S. DEPARTMENT OF THE INTERIOR
U.S. GEOLOGICAL SURVEY



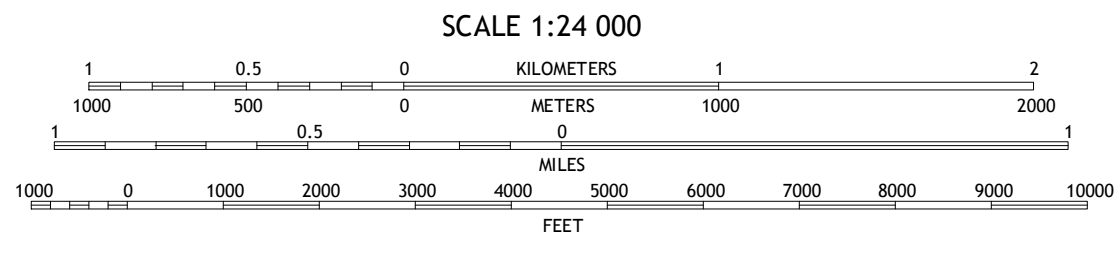
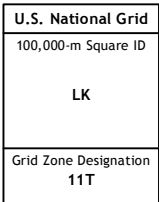
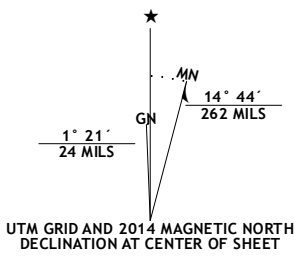
JOHN DAY QUADRANGLE
OREGON-GRANT CO.
7.5-MINUTE SERIES



Produced by the United States Geological Survey
North American Datum of 1983 (NAD83)
World Geodetic System of 1984 (WGS84). Projection and
1 000-meter grid: Universal Transverse Mercator, Zone 11T
10 000-foot ticks: Oregon Coordinate System of 1983 (north
zone)

This map is not a legal document. Boundaries may be
generalized for this map scale. Private lands within government
reservations may not be shown. Obtain permission before
entering private lands.

Imagery.....NAIP, July 2012
Roads.....HERE, 2013
Names.....GNIS, 2013
Hydrography.....National Hydrography Dataset, 2012
Contours.....National Elevation Dataset, 1999
Boundaries.....Multiple sources; see metadata file 1972-2013
Public Land Survey System.....BLM, 2011



CONTOUR INTERVAL 20 FEET
NORTH AMERICAN VERTICAL DATUM OF 1988
This map was produced to conform with the
National Geospatial Program US Topo Product Standard, 2011.
A metadata file associated with this product is draft version 0.6.16



| ROAD CLASSIFICATION | |
|---------------------|-----------------|
| Expressway | Local Connector |
| Secondary Hwy | Local Road |
| Ramp | 4WD |
| Interstate Route | US Route |
| | State Route |

| | | |
|---|---|---|
| 1 | 2 | 3 |
| 4 | 5 | |
| 6 | 7 | 8 |

ADJOINING QUADRANGLES

1 Johnson Saddle
2 Mague Lake
3 Cougar Rock
4 Mount Vernon
5 Castle Creek
6 Fall Mountain
7 Canyon Mountain
8 Pine Creek Mountain

JOHN DAY, OR
2014

