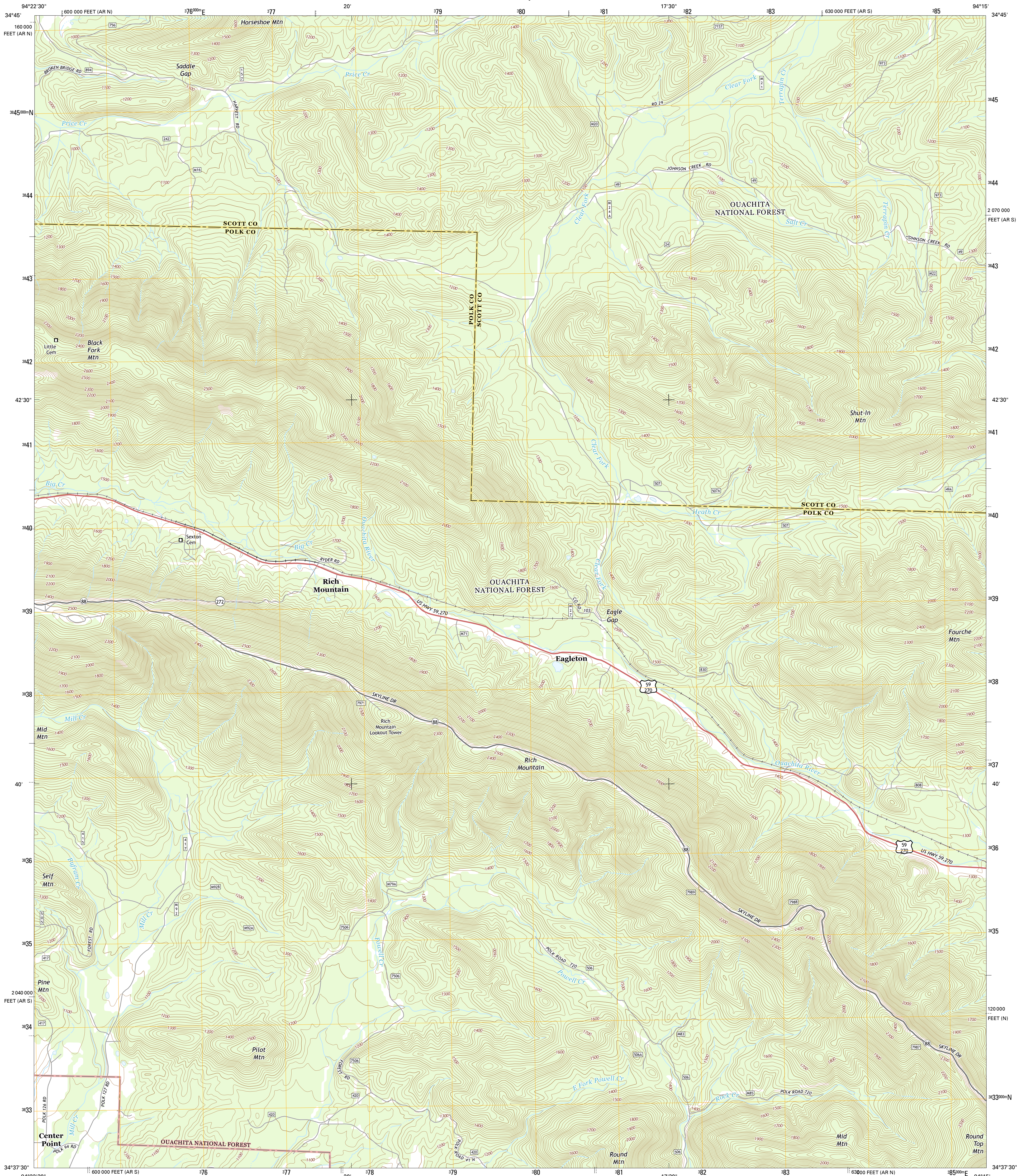




U.S. DEPARTMENT OF THE INTERIOR
U.S. GEOLOGICAL SURVEY



RICH MOUNTAIN QUADRANGLE
ARKANSAS
7.5-MINUTE SERIES



Produced by the United States Geological Survey
North American Datum of 1983 (NAD83)
World Geodetic System of 1984 (WGS84). Projection and
1 000-meter grid: Universal Transverse Mercator, Zone 15S
10 000-foot ticks: Arkansas Coordinate System of 1983 (south
and north zones)

This map is not a legal document. Boundaries may be
generalized for this map scale. Private lands within government
reservations may not be shown. Obtain permission before
entering private lands.

Imagery.....NAIP, June 2010
Roads.....HERE, ©2013
Roads within US Forest Service Lands.....FS Topo Data
with limited Forest Service updates, 2013
Names.....GNIS, 2013
Hydrography.....National Hydrography Dataset, 2010
Contours.....National Elevation Dataset, 2003
Boundaries.....Multiple sources; see metadata file 1972-2013
Public Land Survey System.....BLM, 2011

UTM GRID AND 2014 MAGNETIC NORTH
DECLINATION AT CENTER OF SHEET

U.S. National Grid 100,000-m Square ID
UU
Grid Zone Designation 15S

SCALE 1:24 000

1 0.5 0 0.5 1 2
1000 500 0 500 1000 2000
KILOMETERS

1 0.5 0 0.5 1
1000 500 0 500 1000 2000
METERS

1 0.5 0 0.5 1
1000 500 0 500 1000 2000
MILES

1000 0 1000 2000 3000 4000 5000 6000 7000 8000 9000 10000
FEET

CONTOUR INTERVAL 20 FEET
NORTH AMERICAN VERTICAL DATUM OF 1988



ROAD CLASSIFICATION

Expressway
Secondary Hwy
Ramp

Local Connector
Local Road
4WD

Interstate Route
US Route
FS Primary Route

State Route
FS Passenger Route
FS High Clearance Route

Check with local Forest Service unit
for current travel conditions and restrictions.

1	2	3
4	5	6
7	8	9

ADJOINING QUADRANGLES

1 Loving
2 Horseshoe Mountain
3 Peanut Mountain
4 Mountain Fork
5 Acorn
6 Zafra
7 Potter
8 Mena

RICH MOUNTAIN, AR
2014

