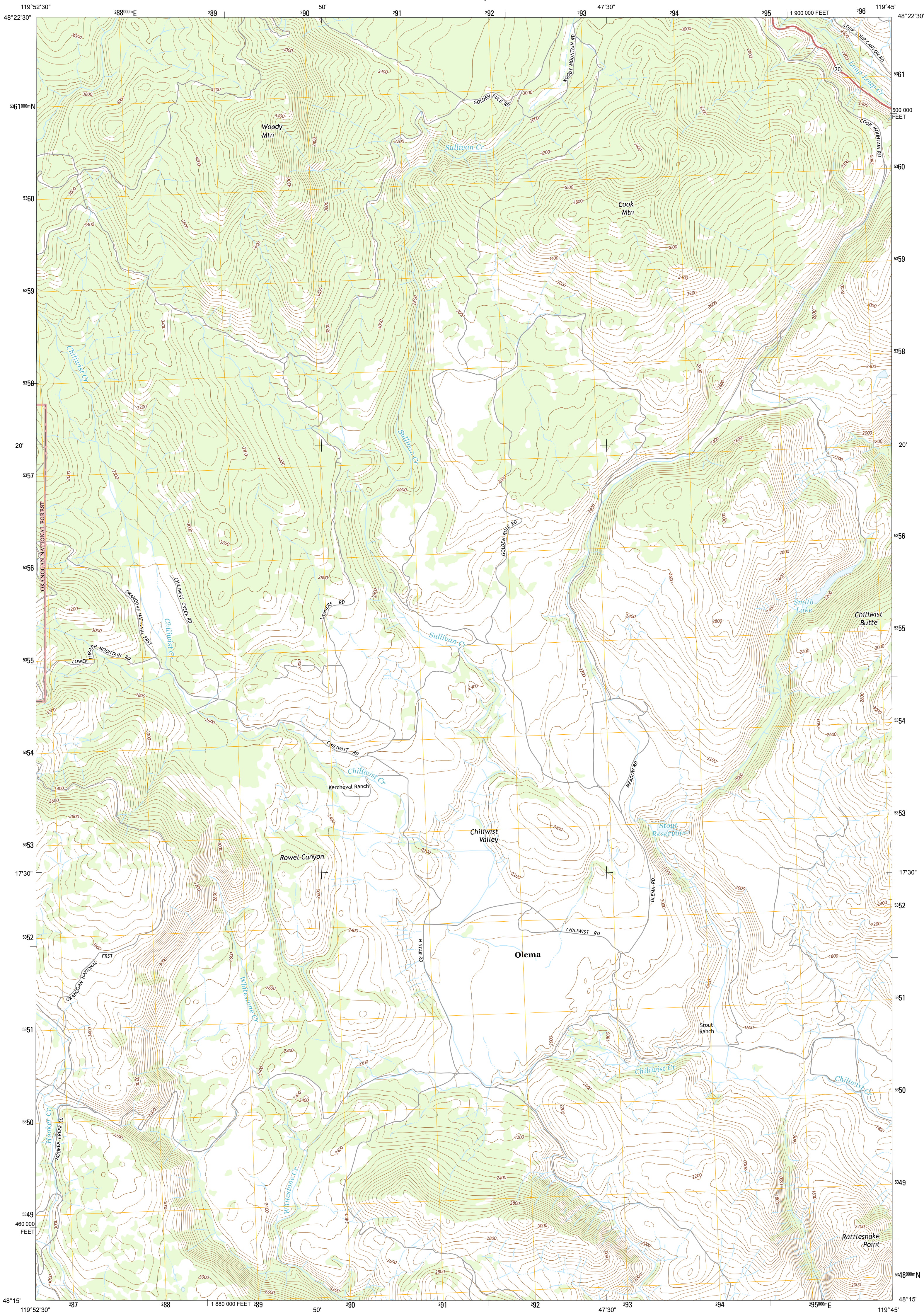




U.S. DEPARTMENT OF THE INTERIOR
U. S. GEOLOGICAL SURVEY



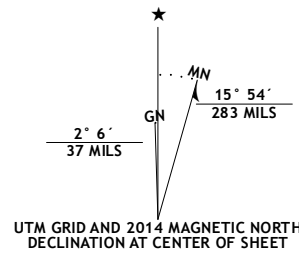
CHILIWIST VALLEY QUADRANGLE
WASHINGTON-OKANOGAN CO.
7.5-MINUTE SERIES



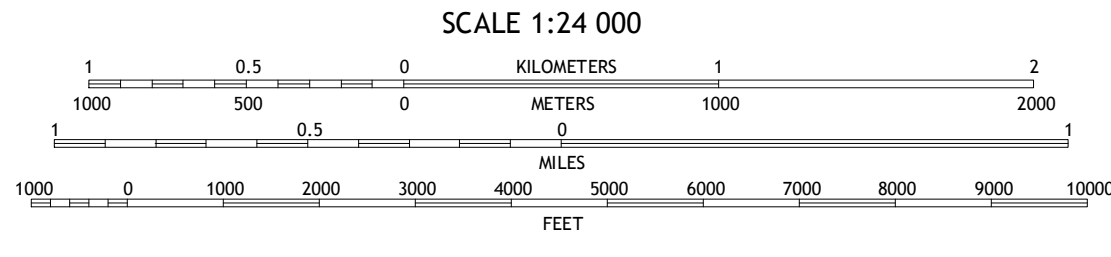
Produced by the United States Geological Survey
North American Datum of 1983 (NAD83)
World Geodetic System of 1984 (WGS84). Projection and
1000-meter grid: Universal Transverse Mercator, Zone 11U
10 000-foot ticks: Washington Coordinate System of 1983 (north
zone)

This map is not a legal document. Boundaries may be
generalized for this map scale. Private lands within government
reservations may not be shown. Obtain permission before
entering private lands.

Imagery.....NAIP, July 2011 - August 2011
Roads.....©2006-2013 TomTom
Roads within US Forest Service Lands.....FS Topo Data
with limited Forest Service updates, 2013
Names.....National Hydrography Dataset, 2011
Hydrography.....National Elevation Dataset, 1999
Contours.....Census, IBWC, IBC, USGS, 1972 - 2012
Public Land Survey System.....BLM, 2011



U.S. National Grid
100,000-m Square ID
KP
Grid Zone Designation
11U



CONTOUR INTERVAL 40 FEET
NORTH AMERICAN VERTICAL DATUM OF 1988
This map was produced to conform with the
National Geospatial Program US Topo Product Standard, 2011.
A metadata file associated with this product is draft version 0.6.15



QUADRANGLE LOCATION

Loop Loop Summit	Back Mountain	Ruby Hill
Thripp Mountain	Chiliwist Valley	Malott
Knowlton Knob	Rat Lake	Morse

ROAD CLASSIFICATION			
Expressway	Local Connector	Interstate Route	State Route
Secondary Hwy	Local Road	US Route	FS High
Ramp	4WD	FS Passenger Route	Clearance Route
FS Primary Route			

Check with local Forest Service unit
for current travel conditions and restrictions.

CHILIWIST VALLEY, WA
2014

