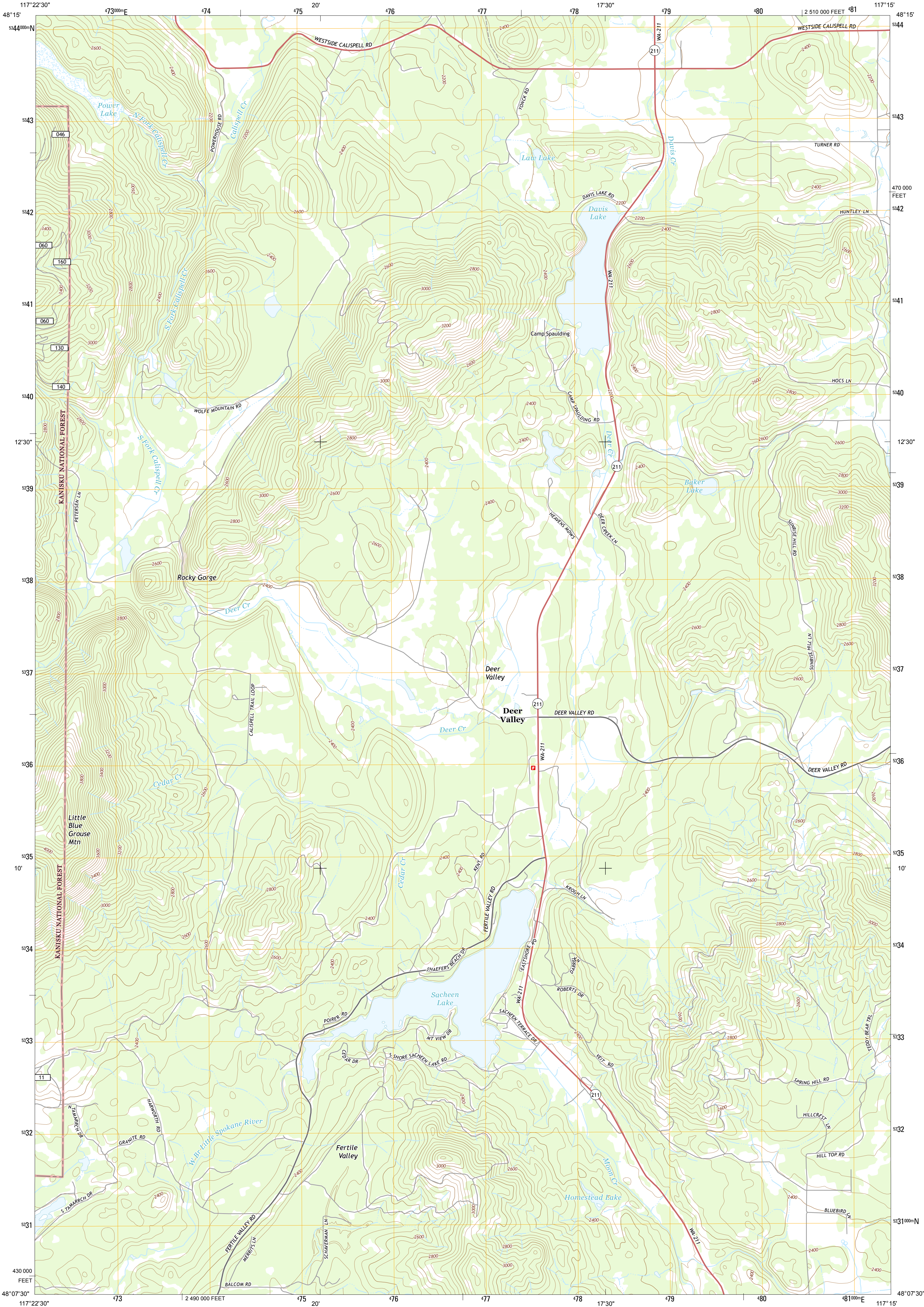




U.S. DEPARTMENT OF THE INTERIOR
U. S. GEOLOGICAL SURVEY



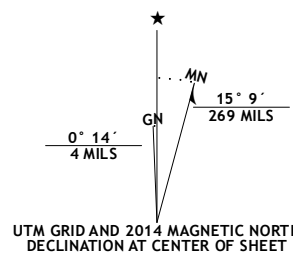
SACHEEN LAKE QUADRANGLE
WASHINGTON-PEND OREILLE CO.
7.5-MINUTE SERIES



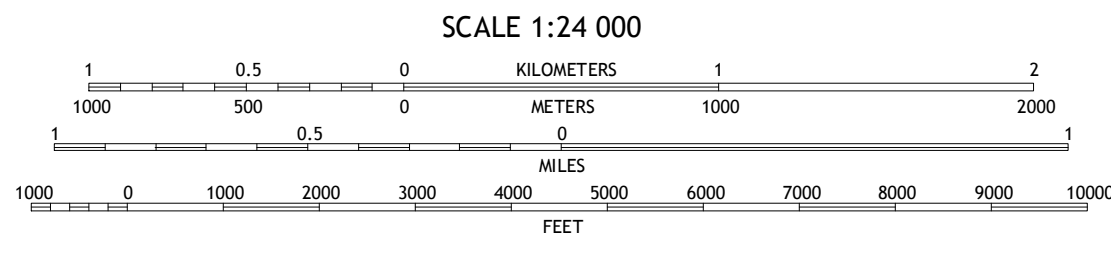
Produced by the United States Geological Survey
North American Datum of 1983 (NAD83)
World Geodetic System of 1984 (WGS84). Projection and
1 000-meter grid: Universal Transverse Mercator, Zone 11U
10 000-foot ticks: Washington Coordinate System of 1983 (north
zone)

This map is not a legal document. Boundaries may be
generalized for this map scale. Private lands within government
reservations may not be shown. Obtain permission before
entering private lands.

Imagery.....NAIP, July 2011
Roads.....2006-2013 TomTom
Roads within US Forest Service Lands.....FSTopo Data
with limited Forest Service updates, 2013
Names.....GNIS, 2013
Hydrography.....National Hydrography Dataset, 2011
Contours.....National Elevation Dataset, 1999
Boundaries.....IBWC, IBC, USGS, 1972 - 2012
Public Land Survey System.....BLM, 2011



| U.S. National Grid |
|-----------------------|
| 100,000-m Square ID |
| MP |
| Grid Zone Designation |
| 11U |



CONTOUR INTERVAL 40 FEET
NORTH AMERICAN VERTICAL DATUM OF 1988
This map was produced to conform with the
National Geospatial Program US Topo Product Standard, 2011.
A metadata file associated with this product is draft version 0.6.15



| | | |
|-----------------|--------------|--------------|
| Winchester Peak | Cusick | Skokum Creek |
| Boyer Mountain | Sacheen Lake | Diamond Lake |
| Fan Lake | Elk | Camden |

| ROAD CLASSIFICATION | |
|---------------------|--------------------|
| Expressway | Local Connector |
| Secondary Hwy | Local Road |
| Ramp | 4WD |
| Interstate Route | US Route |
| FS Primary Route | FS Passenger Route |
| | State Route |
| | Clearance Route |

Check with local Forest Service unit
for current travel conditions and restrictions.

SACHEEN LAKE, WA
2014

