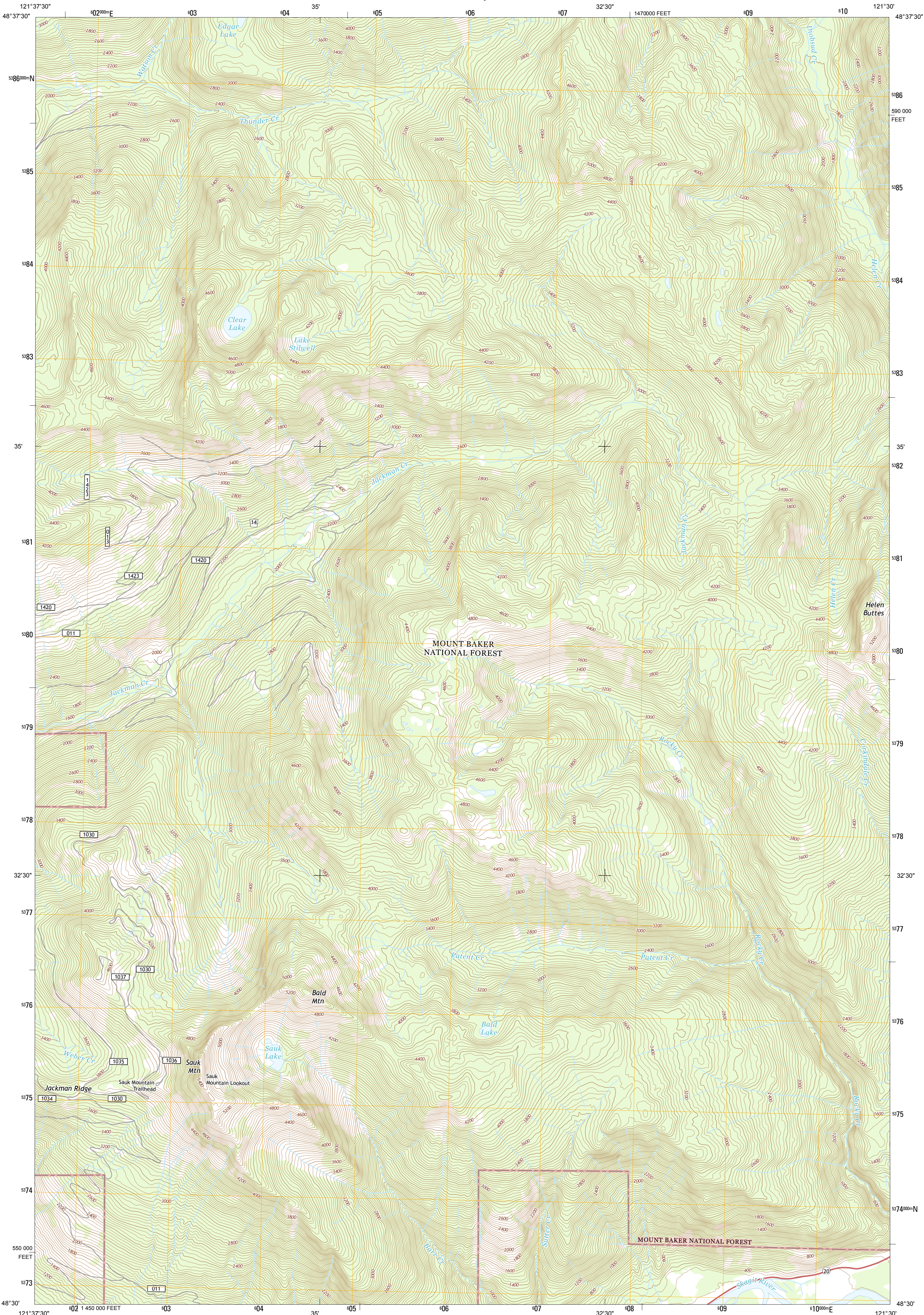




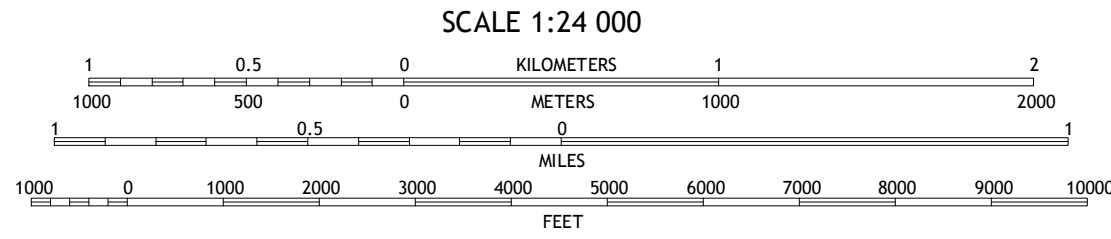
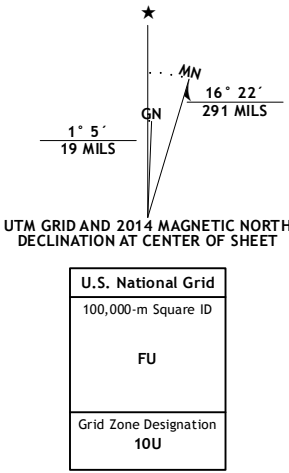
U.S. DEPARTMENT OF THE INTERIOR  
U. S. GEOLOGICAL SURVEY



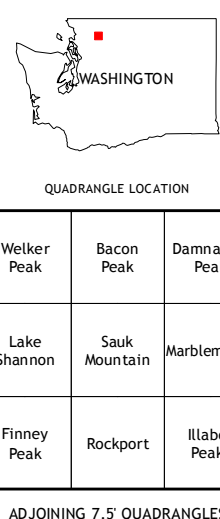
SAUK MOUNTAIN QUADRANGLE  
WASHINGTON-SKAGIT CO.  
7.5-MINUTE SERIES



**Produced by the United States Geological Survey**  
North American Datum of 1983 (NAD83)  
World Geodetic System of 1984 (WGS84), Projection and  
1 000-meter grid; Universal Transverse Mercator, Zone 10U  
10 000-foot ticks: Washington Coordinate System of 1983 (north  
zone)  
This map is not a legal document. Boundaries may be  
generalized for this map scale. Private lands within government  
reservations may not be shown. Obtain permission before  
entering private lands.  
Imagery.....NIP, August 2011  
Roads.....©2009-2013 TomTom  
Roads within US Forest Service Lands.....FSTopo Data  
with limited Forest Service updates, 2013  
Names.....GNIS, 2013  
Hydrography.....National Hydrography Dataset, 2011  
Contours.....National Elevation Dataset, 2009  
Boundaries.....Census, IBC, USGS, 1972 - 2012  
Public Land Survey System.....BLM, 2011



CONTOUR INTERVAL 40 FEET  
NORTH AMERICAN VERTICAL DATUM OF 1988  
This map was produced to conform with the  
National Geospatial Program US Topo Product Standard, 2011.  
A metadata file associated with this product is draft version 0.6.15



| ROAD CLASSIFICATION |                 |                    |                         |
|---------------------|-----------------|--------------------|-------------------------|
| Expressway          | Local Connector | US Route           | State Route             |
| Secondary Hwy       | Local Road      | FS Passenger Route | FS High Clearance Route |
| Ramp                | 4WD             |                    |                         |
| Interstate Route    |                 |                    |                         |
| FS Primary Route    |                 |                    |                         |

Check with local Forest Service unit  
for current travel conditions and restrictions.

SAUK MOUNTAIN, WA  
2014

