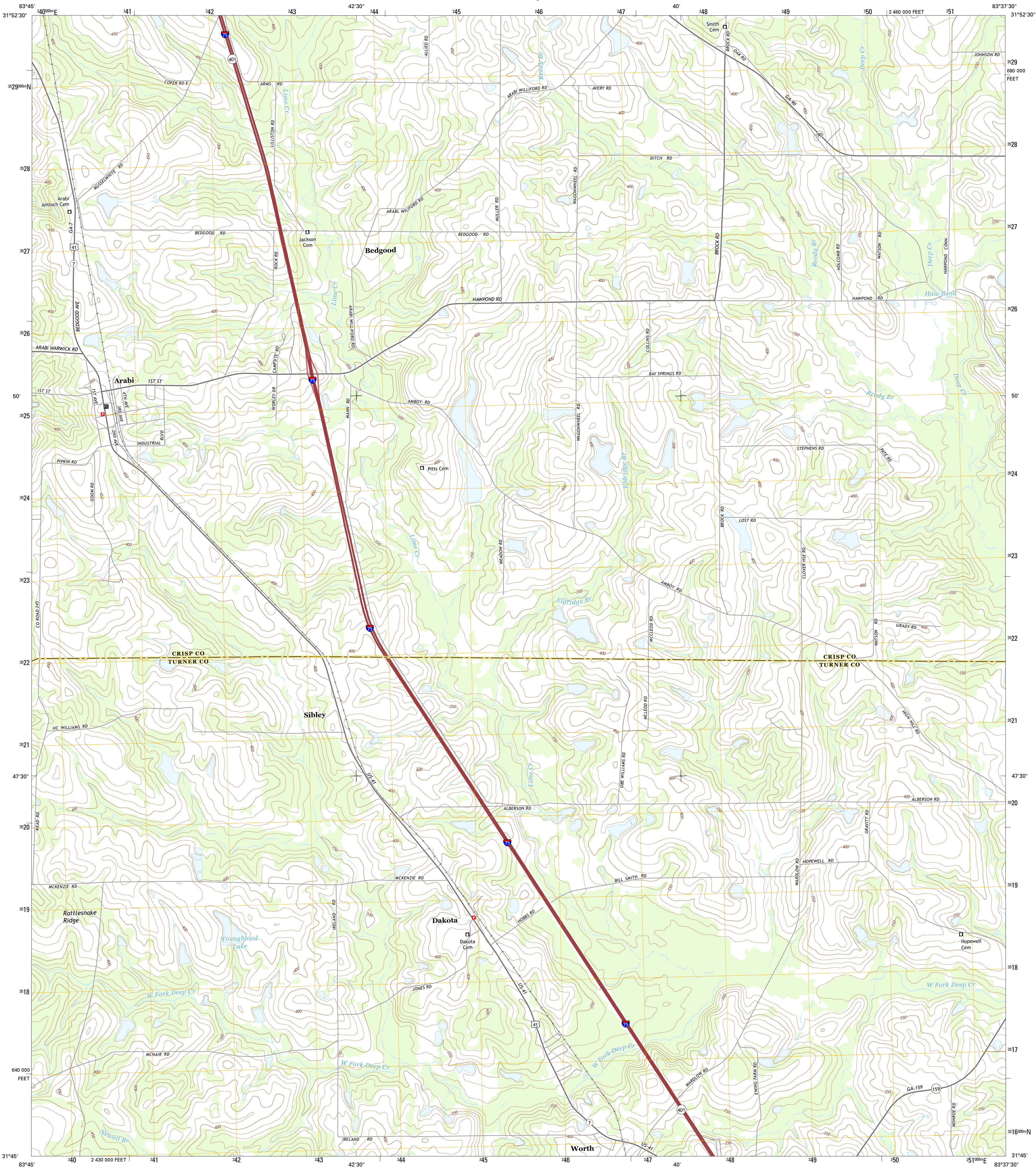




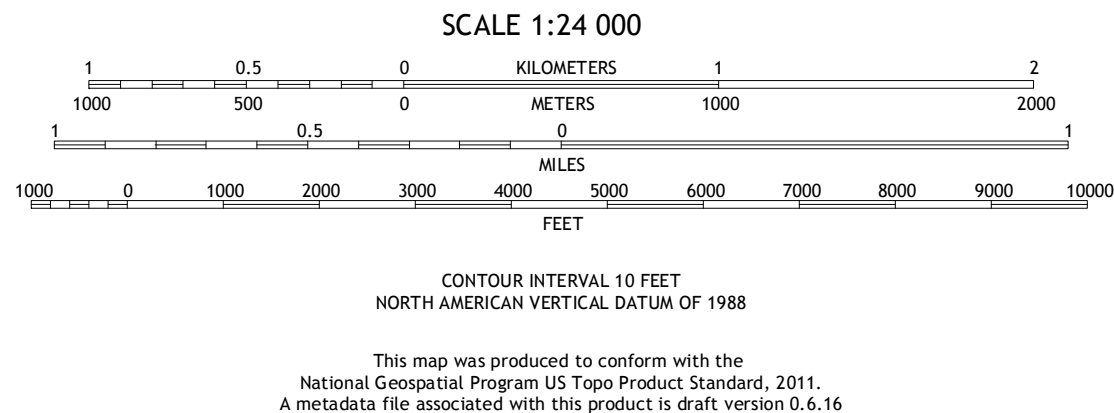
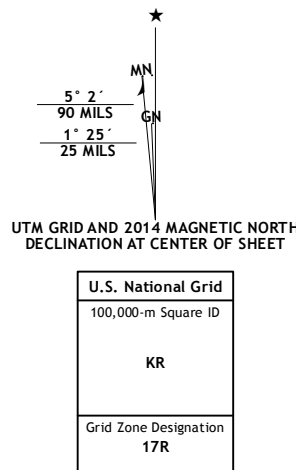
U.S. DEPARTMENT OF THE INTERIOR  
U.S. GEOLOGICAL SURVEY



ARABI QUADRANGLE  
GEORGIA  
7.5-MINUTE SERIES



**Produced by the United States Geological Survey**  
North American Datum of 1983 (NAD83)  
World Geodetic System of 1984 (WGS84). Projection and  
1 000-meter grid: Universal Transverse Mercator, Zone 17R  
10 000-foot ticks: Georgia Coordinate System of 1983 (west  
zone)  
  
This map is not a legal document. Boundaries may be  
generalized for this map scale. Private lands within government  
reservations may not be shown. Obtain permission before  
entering private lands.  
  
Imagery.....NAIP, September 2010  
Roads.....HERE, ©2013  
Names.....GNIS, 2013  
Hydrography.....National Hydrography Dataset, 2010  
Contours.....National Elevation Dataset, 2001  
Boundaries.....Multiple sources; see metadata file 1972 - 2013



ROAD CLASSIFICATION							
Expressway	Secondary Hwy	Ramp	Interstate Route	Local Connector	Local Road	4WD	US Route
State Route							

1	2	3
4	5	6
7	8	

ADJOINING QUADRANGLES

1 Cordele  
2 Penia  
3 Pitts  
4 Pateville  
5 Amboy  
6 Cuffletown  
7 Ashburn  
8 Bethel

ARABI, GA  
2014

