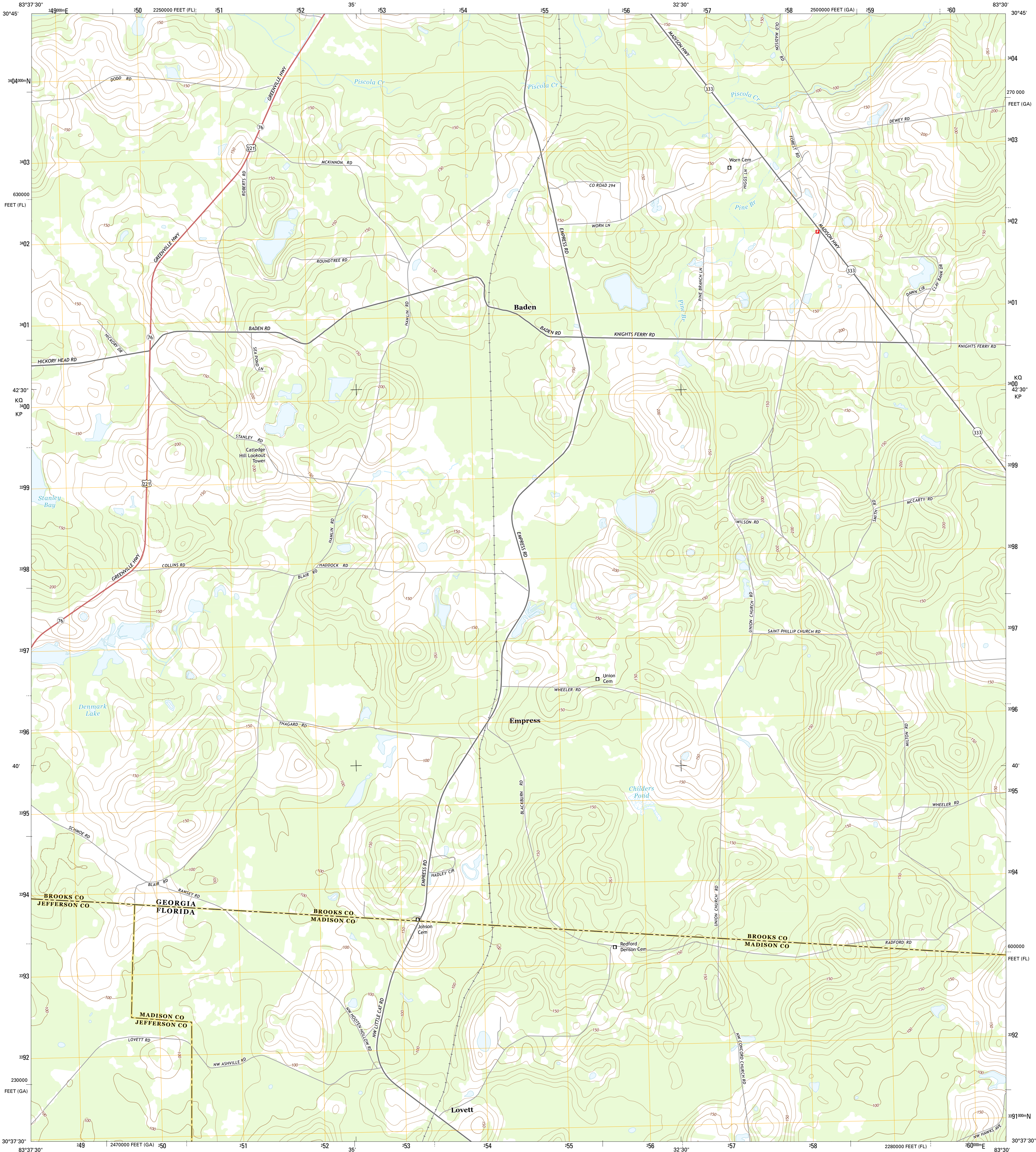




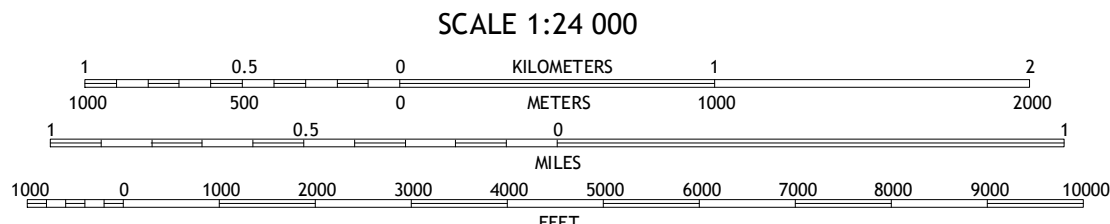
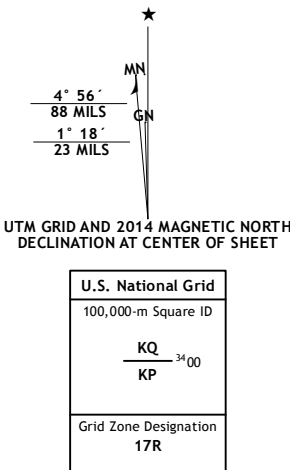
U.S. DEPARTMENT OF THE INTERIOR  
U.S. GEOLOGICAL SURVEY



BADEN QUADRANGLE  
GEORGIA-FLORIDA  
7.5-MINUTE SERIES



Produced by the United States Geological Survey  
North American Datum of 1983 (NAD83)  
World Geodetic System of 1984 (WGS84), Projection and  
1 000-meter grid: Universal Transverse Mercator, Zone 17R  
10 000-foot ticks: Georgia Coordinate System of 1983 (west  
zone), Florida Coordinate System of 1983 (north zone)  
This map is not a legal document. Boundaries may be  
generalized for this map scale. Private lands within government  
reservations may not be shown. Obtain permission before  
entering private lands.  
Imagery.....NAIP, September 2010  
Roads.....HERE, ©2013  
Names.....GNIS, 2013  
Hydrography.....National Hydrography Dataset, 2010  
Contours.....National Elevation Dataset, 2008  
Boundaries.....Multiple sources; see metadata file 1972 - 2013



CONTOUR INTERVAL 10 FEET  
NORTH AMERICAN VERTICAL DATUM OF 1988  
This map was produced to conform with the  
National Geospatial Program US Topo Product Standard, 2011.  
A metadata file associated with this product is draft version 0.6.16



|   |   |   |                |
|---|---|---|----------------|
| 1 | 2 | 3 | 1 Dixie        |
| 4 |   | 5 | 2 Quitman      |
| 6 | 7 | 8 | 3 Osley        |
|   |   |   | 4 Grooverville |
|   |   |   | 5 Nankin       |
|   |   |   | 6 Ashville     |
|   |   |   | 7 Hamburg      |
|   |   |   | 8 Cherry Lake  |

ADJOINING QUADRANGLES

BADEN, GA-FL  
2014

