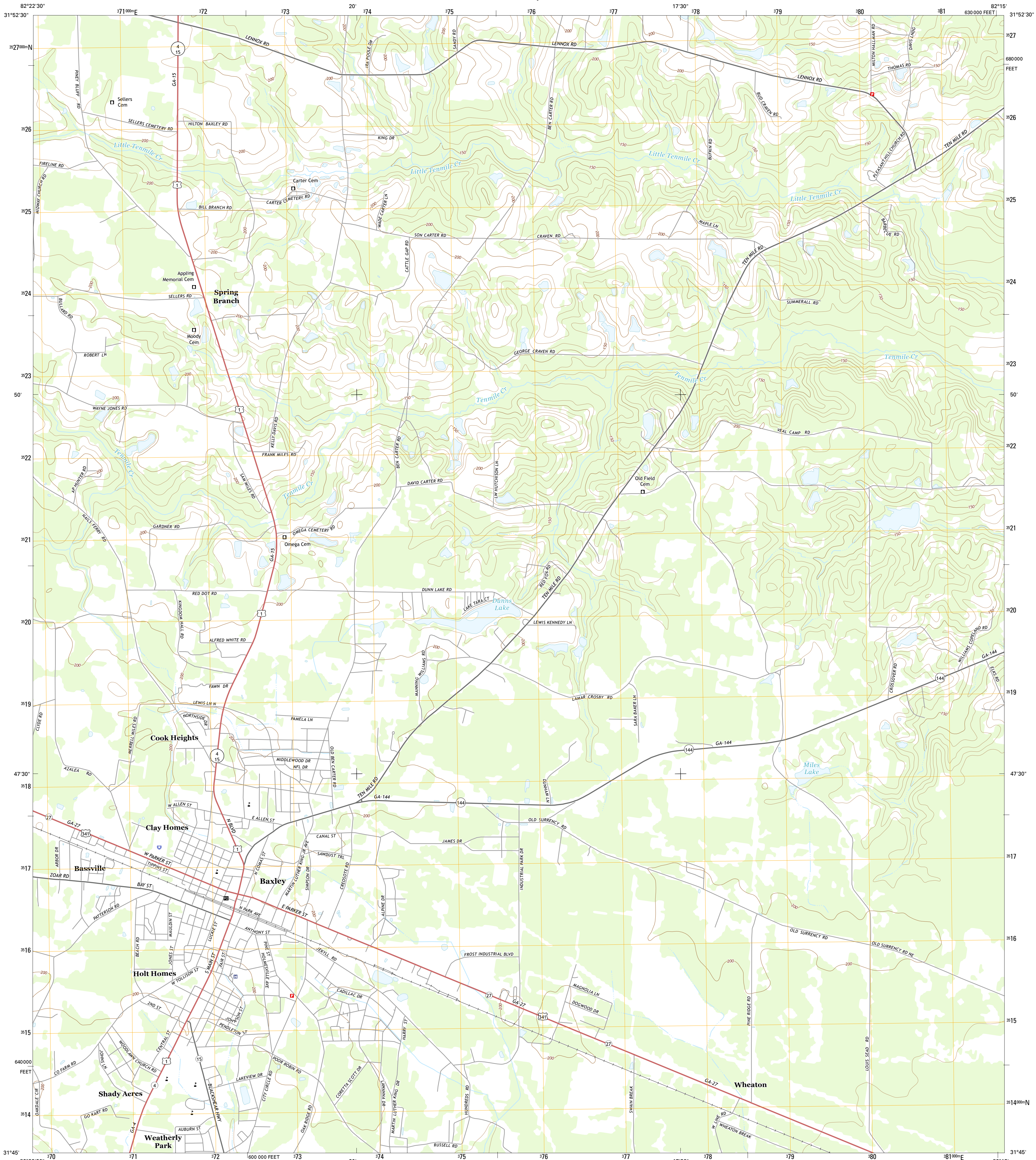




U.S. DEPARTMENT OF THE INTERIOR
U.S. GEOLOGICAL SURVEY



BAXLEY QUADRANGLE
GEORGIA-APPLING CO.
7.5-MINUTE SERIES

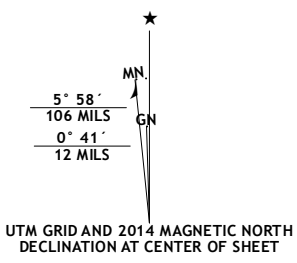


Produced by the United States Geological Survey

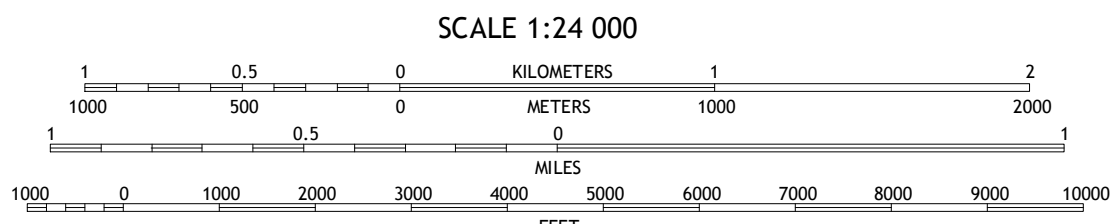
North American Datum of 1983 (NAD83)
World Geodetic System of 1984 (WGS84) Projection and
1000-meter grid: Universal Transverse Mercator, Zone 17R
10 000-foot ticks: Georgia Coordinate System of 1983 (east
zone)

This map is not a legal document. Boundaries may be
generalized for this map scale. Private lands within government
reservations may not be shown. Obtain permission before
entering private lands.

Imagery.....NAIP, September 2010
Roads.....HERE, ©2013
Names.....GNIS, 2013
Hydrography.....National Hydrography Dataset, 2010
Contours.....National Elevation Dataset, 2008
Boundaries.....Multiple sources; see metadata file 1972 - 2013



| |
|-----------------------|
| U.S. National Grid |
| 100,000-m Square ID |
| LR |
| Grid Zone Designation |
| 17R |



CONTOUR INTERVAL 10 FEET
NORTH AMERICAN VERTICAL DATUM OF 1988
This map was produced to conform with the
National Geospatial Program US Topo Product Standard, 2011.
A metadata file associated with this product is draft version 0.6.16



| ROAD CLASSIFICATION | | | |
|---------------------|---------------|------|------------------|
| Expressway | Secondary Hwy | Ramp | Interstate Route |
| Local Connector | Local Road | 4WD | US Route |
| | | | State Route |

| | | | |
|---|---|---|-----------------|
| 1 | 2 | 3 | 1 Grays Landing |
| 4 | 5 | 6 | 2 Baxley NE |
| 7 | 8 | 9 | 3 Altamaha |
| | | | 4 Pine Grove |
| | | | 5 Altamaha SW |
| | | | 6 Alma NW |
| | | | 7 Alma NE |
| | | | 8 Surrency |

BAXLEY, GA
2014

