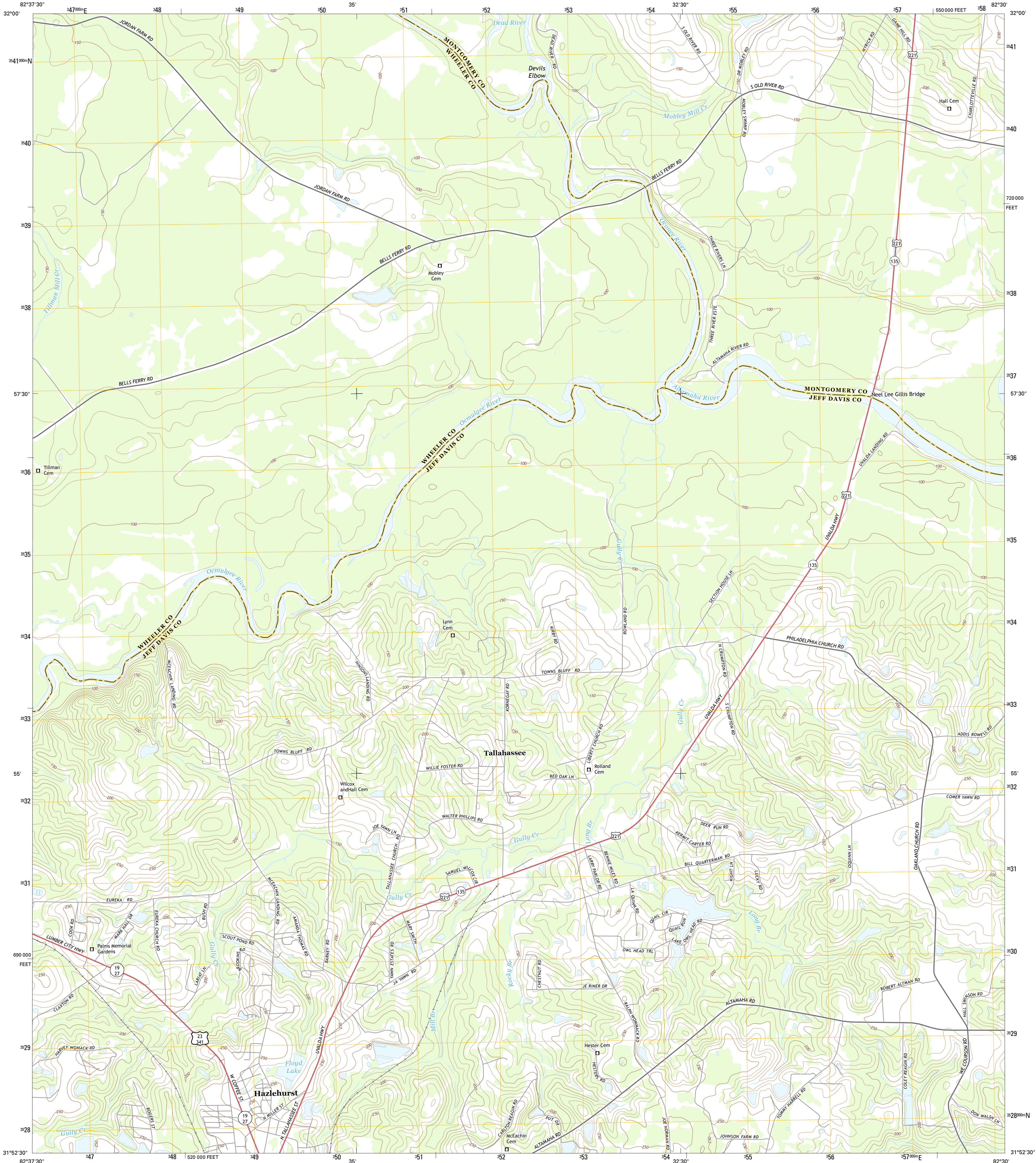




U.S. DEPARTMENT OF THE INTERIOR
U.S. GEOLOGICAL SURVEY



HAZLEHURST NORTH QUADRANGLE
GEORGIA
7.5-MINUTE SERIES



Produced by the United States Geological Survey

North American Datum of 1983 (NAD83)
World Geodetic System of 1984 (WGS84) Projection and
1000-meter grid: Universal Transverse Mercator, Zone 17R
10 000-foot ticks: Georgia Coordinate System of 1983 (east zone)

This map is not a legal document. Boundaries may be generalized for this map scale. Private lands within government reservations may not be shown. Obtain permission before entering private lands.

Imagery.....NAIP, July 2010
Roads.....HERE, ©2013
Names.....GNIS, 2013
Hydrography.....National Hydrography Dataset, 2010
Contours.....National Elevation Dataset, 2008
Boundaries.....Multiple sources; see metadata file 1972 - 2013

UTM GRID AND 2014 MAGNETIC NORTH DECLINATION AT CENTER OF SHEET

U.S. National Grid
100,000-m Square ID
LR
Grid Zone Designation
17R

SCALE 1:24 000

1 0.5 0 0.5 1 2
1000 500 0 500 1000
KILOMETERS

1 0.5 0 0.5 1
1000 500 0 500 1000
METERS

1 0.5 0 0.5 1
1000 500 0 500 1000
MILES

1000 0 1000 2000 3000 4000 5000 6000 7000 8000 9000 10000
FEET

CONTOUR INTERVAL 10 FEET
NORTH AMERICAN VERTICAL DATUM OF 1988

This map was produced to conform with the
National Geospatial Program US Topo Product Standard, 2011.
A metadata file associated with this product is draft version 0.6.16



QUADRANGLE LOCATION

ROAD CLASSIFICATION

Expressway	Local Connector
Secondary Hwy	Local Road
Ramp	4WD
Interstate Route	US Route
	State Route

1	2	3	1 Jordan
4	5	6	2 Uvalda
7	8	9	3 Alston
			4 Lumber City
			5 Grays Landing
			6 Roper
			7 Hazlehurst South
			8 Pine Grove

ADJOINING QUADRANGLES

HAZLEHURST NORTH, GA
2014



NSN 7540-01-000-0000
NGA REF NO. USGSX24K19862