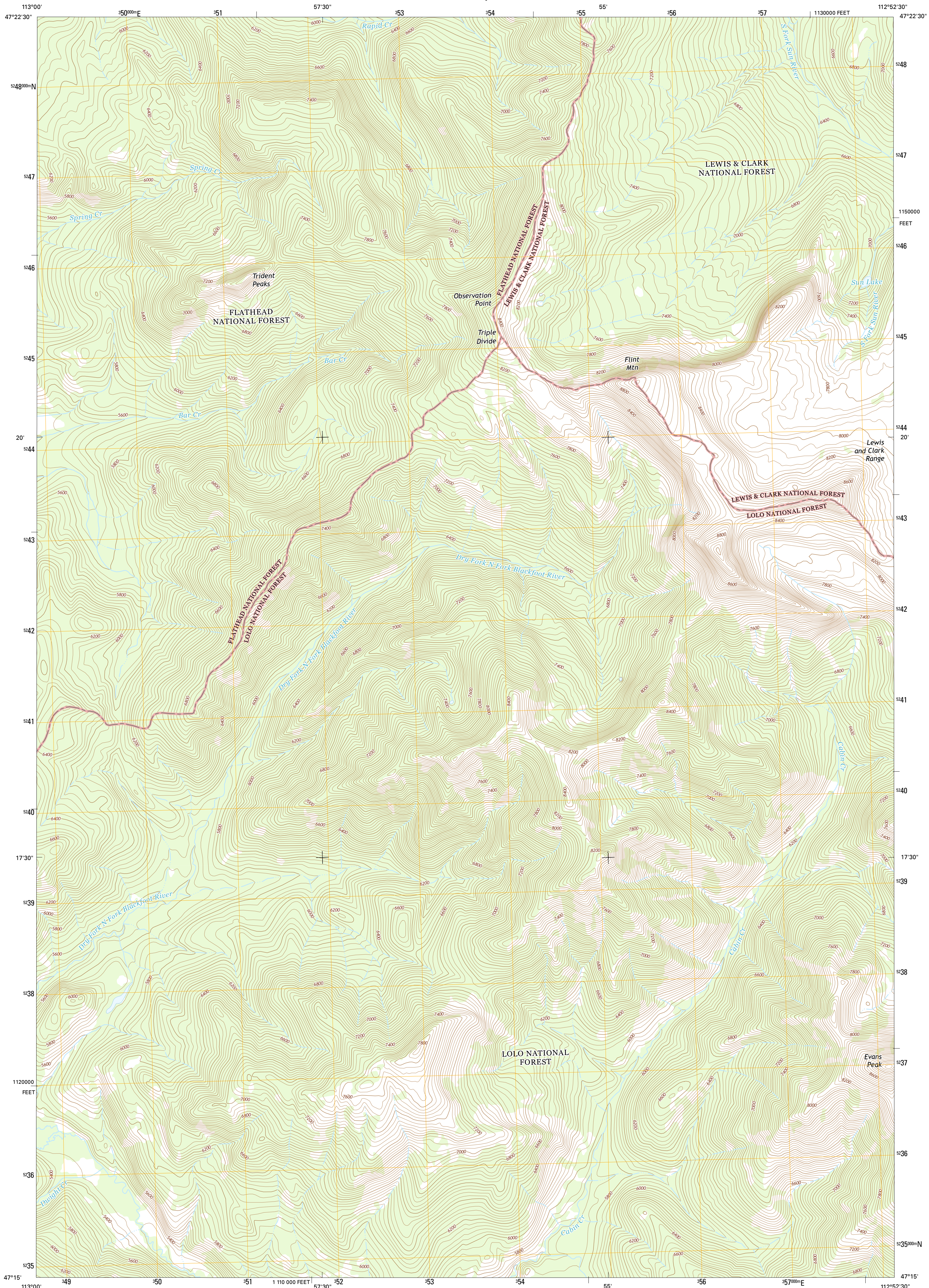




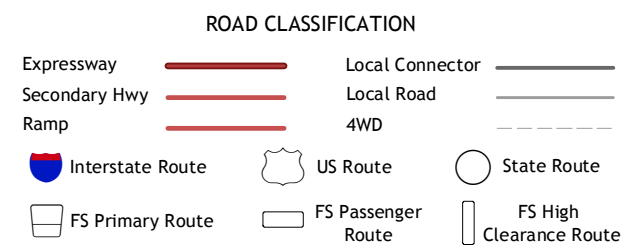
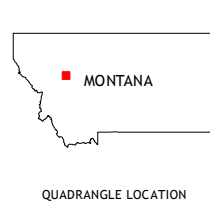
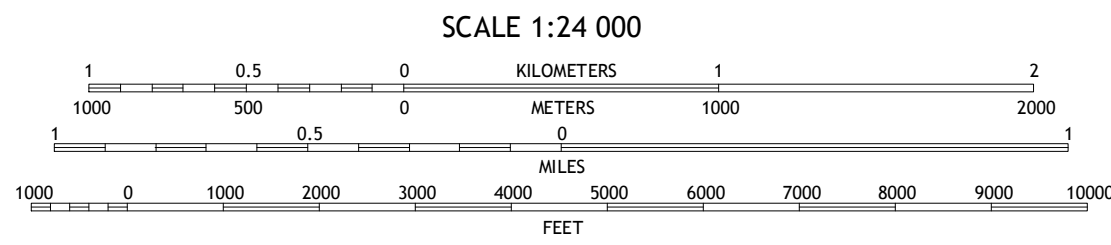
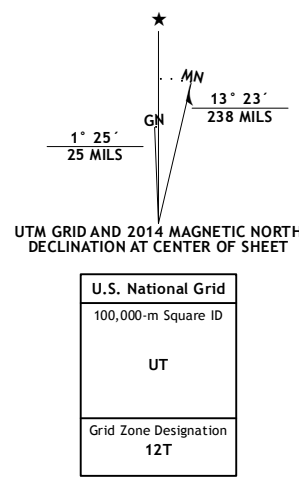
U.S. DEPARTMENT OF THE INTERIOR  
U.S. GEOLOGICAL SURVEY



FLINT MOUNTAIN QUADRANGLE  
MONTANA-LEWIS AND CLARK CO.  
7.5-MINUTE SERIES



Produced by the United States Geological Survey  
North American Datum of 1983 (NAD83)  
World Geodetic System of 1984 (WGS84). Projection and  
1000-meter grid: Universal Transverse Mercator, Zone 12T  
10 000-foot ticks: Montana Coordinate System of 1983  
This map is not a legal document. Boundaries may be  
generalized for this map scale. Private lands within government  
reservations may not be shown. Obtain permission before  
entering private lands.  
Imagery.....N.A.P., August 2011  
Roads.....HERE, ©2013  
Roads within US Forest Service Lands.....FS Topo Data  
with limited Forest Service updates, 2013  
Names.....G.N.I.S., 2013  
Hydrography.....National Hydrography Dataset, 2011  
Contours.....National Elevation Dataset, 1999  
Boundaries.....Multiple sources; see metadata file 1972 - 2013  
Public Land Survey System.....BLM, 2011



1	2	3
4	5	6
7	8	9

1 Trap Mountain  
2 Benchmark  
3 Wood Lake  
4 Danaher Mountain  
5 Scapegoat Mountain  
6 Spread Mountain  
7 Lake Mountain  
8 Olson Peak

FLINT MOUNTAIN, MT  
2014

