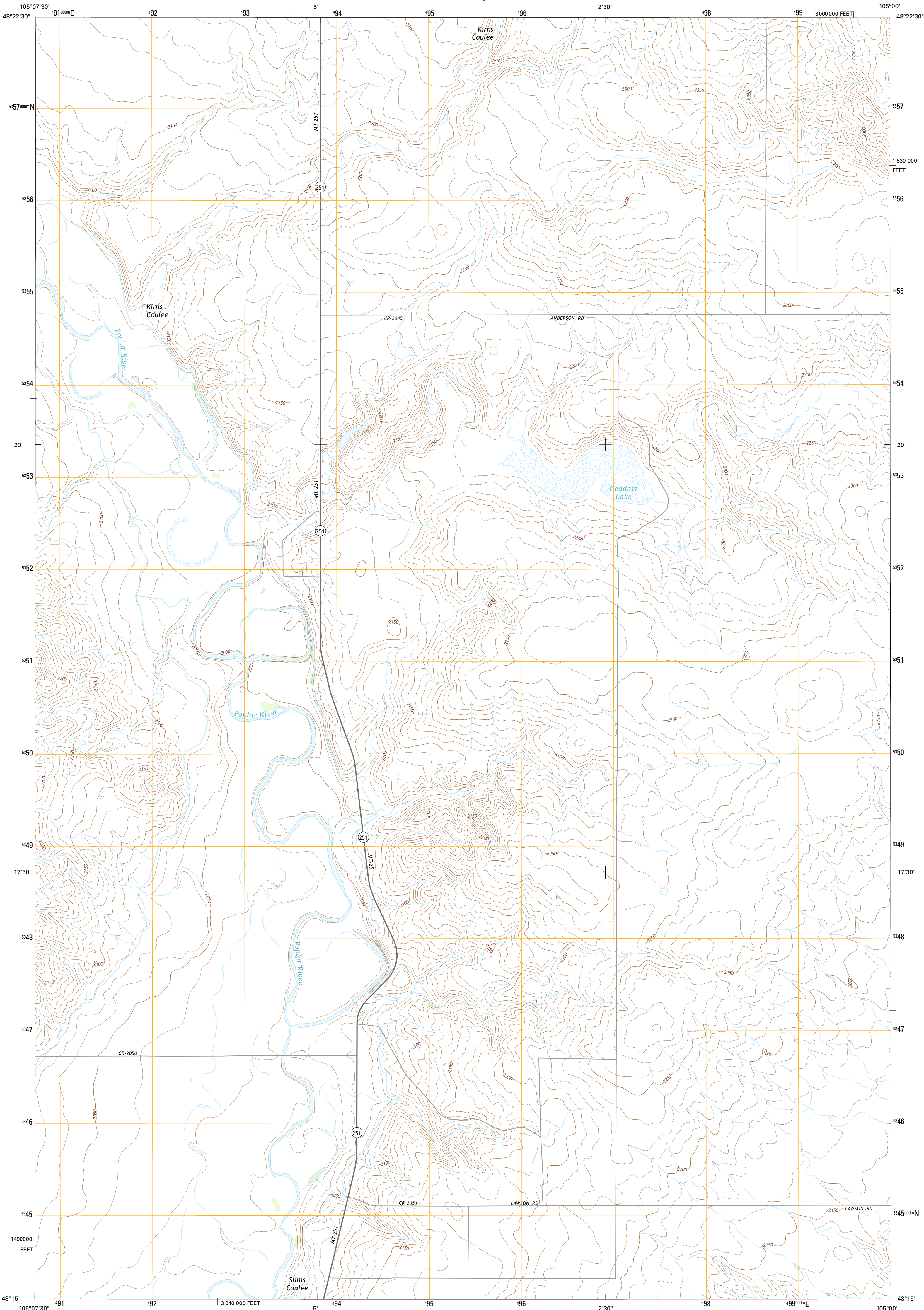




U.S. DEPARTMENT OF THE INTERIOR
U.S. GEOLOGICAL SURVEY



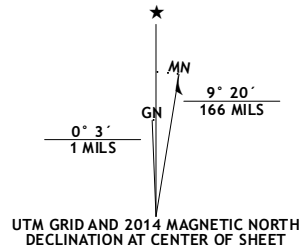
GEDDART LAKE QUADRANGLE
MONTANA-ROOSEVELT CO.
7.5-MINUTE SERIES



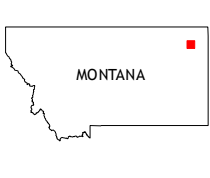
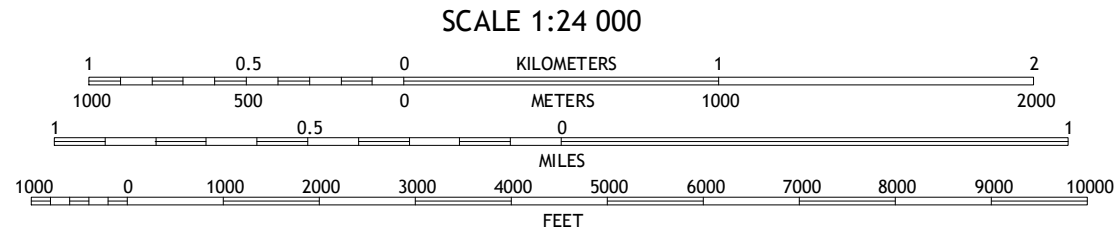
Produced by the United States Geological Survey
North American Datum of 1983 (NAD83)
World Geodetic System of 1984 (WGS84). Projection and
1 000-meter grid; Universal Transverse Mercator, Zone 13U
10 000-foot ticks; Montana Coordinate System of 1983

This map is not a legal document. Boundaries may be
generalized for this map scale. Private lands within government
reservations may not be shown. Obtain permission before
entering private lands.

Imagery.....NAIP, July 2011
Roads.....HERE, ©2013
Names.....GNIS, 2013
Hydrography.....National Hydrography Dataset, 2011
Contours.....National Elevation Dataset, 2009
Boundaries.....Multiple sources; see metadata file 1972 - 2013
Public Land Survey System.....BLM, 2011



U.S. National Grid
100,000-m Square ID
DP
Grid Zone Designation
13U



QUADRANGLE LOCATION

ROAD CLASSIFICATION	
Expressway	Local Connector
Secondary Hwy	Local Road
Ramp	4WD
Interstate Route	US Route
	State Route

CONTOUR INTERVAL 10 FEET
NORTH AMERICAN VERTICAL DATUM OF 1988

This map was produced to conform with the
National Geospatial Program US Topo Product Standard, 2011.
A metadata file associated with this product is draft version 0.6.16

1	2	3
4	5	6
7	8	9

ADJOINING QUADRANGLES

1 Hay Creek NW
2 Hay Creek
3 Blom School
4 Long Creek East
5 Smoke Creek SW
6 Badger Creek
7 Poplar NE
8 Brockton

GEDDART LAKE, MT
2014

