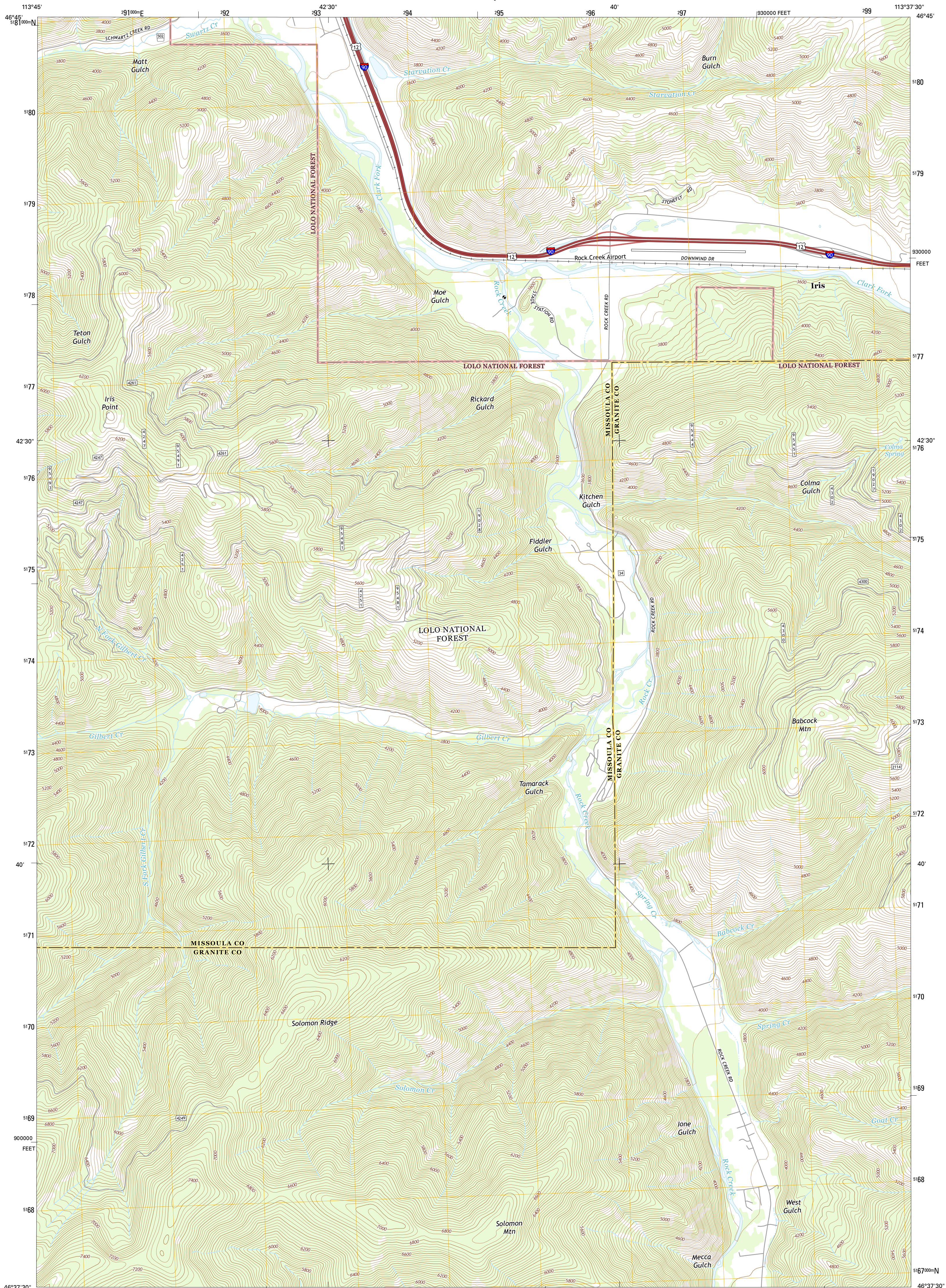




U.S. DEPARTMENT OF THE INTERIOR
U.S. GEOLOGICAL SURVEY



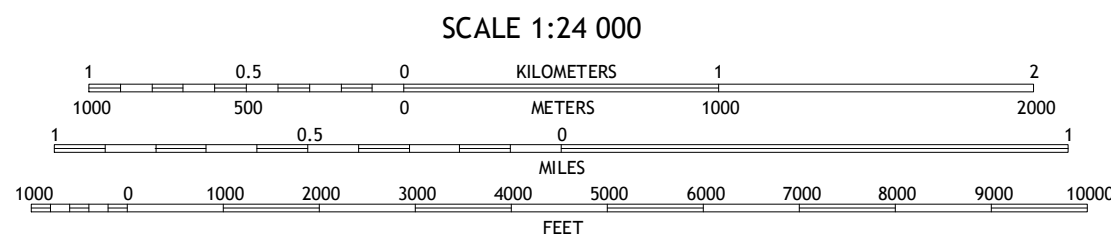
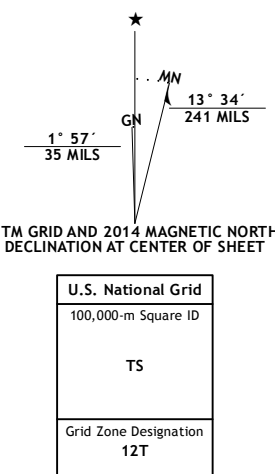
IRIS POINT QUADRANGLE
MONTANA
7.5-MINUTE SERIES



Produced by the United States Geological Survey
North American Datum of 1983 (NAD83)
World Geodetic System of 1984 (WGS84). Projection and
1 000-meter grid: Universal Transverse Mercator, Zone 12T
10 000-foot ticks: Montana Coordinate System of 1983

This map is not a legal document. Boundaries may be
generalized for this map scale. Private lands within government
reservations may not be shown. Obtain permission before
entering private lands.

Imagery.....NAIP, September 2011
Roads.....HERE, 2013
Roads within US Forest Service Lands.....FSTopo Data
with limited Forest Service updates, 2013
Names.....GNIS, 2013
Hydrography.....National Hydrography Dataset, 2011
Contours.....National Elevation Dataset, 2005
Boundaries.....Multiple sources; see metadata file 1972-2013
Public Land Survey System.....BLM, 2011



CONTOUR INTERVAL 40 FEET
NORTH AMERICAN VERTICAL DATUM OF 1988
This map was produced to conform with the
National Geospatial Program US Topo Product Standard, 2011.
A metadata file associated with this product is draft version 0.6.16

1	2	3
4	5	6
7	8	9

ADJOINING QUADRANGLES

ROAD CLASSIFICATION
Expressway
Secondary Hwy
Ramp
Interstate Route
US Route
FS Passenger Route
Local Connector
Local Road
4WD
State Route
FS High
Clearance Route

Check with local Forest Service unit
for current travel conditions and restrictions.

IRIS POINT, MT
2014

