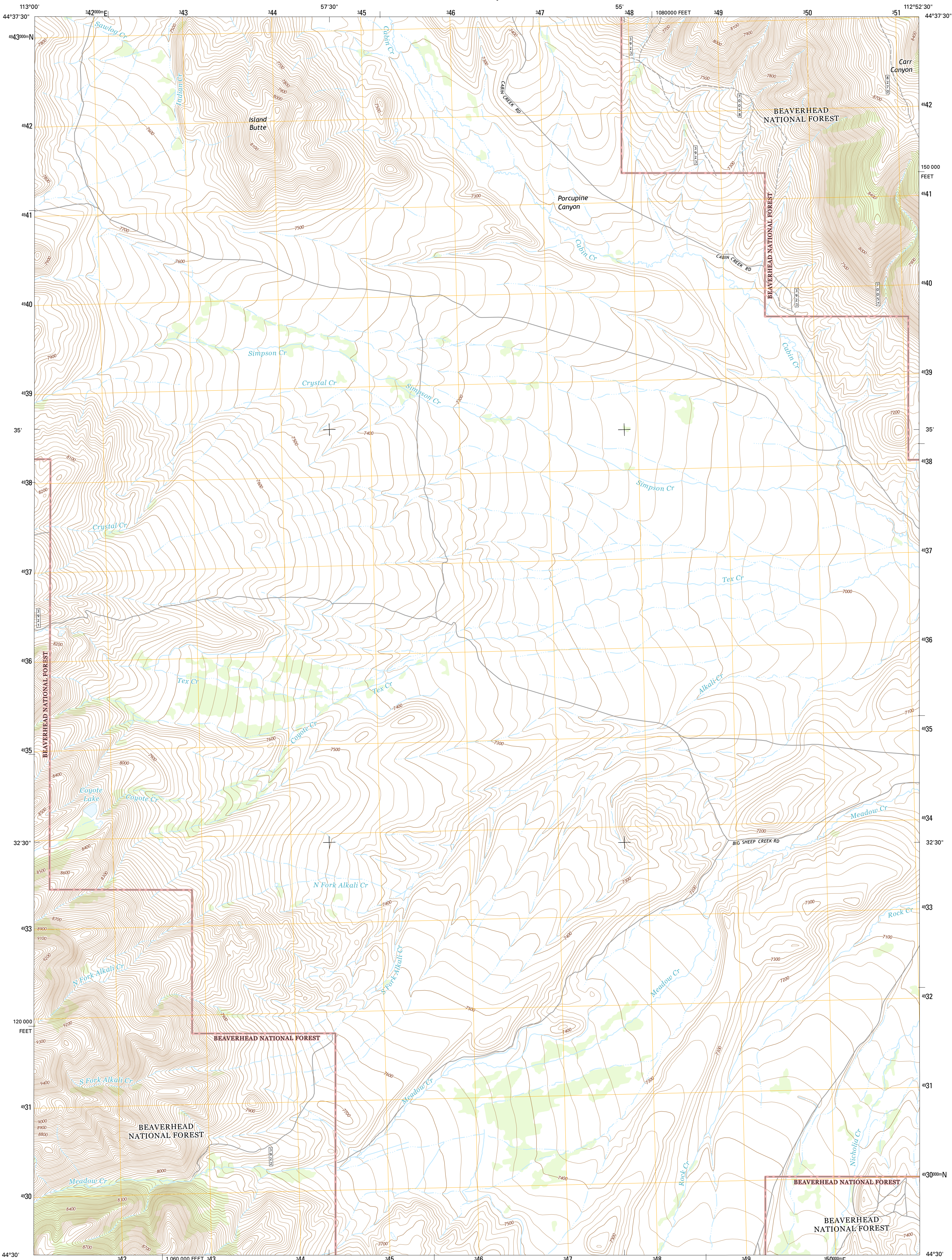




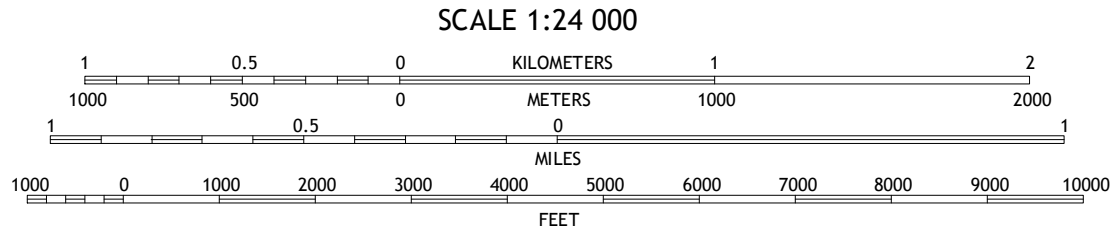
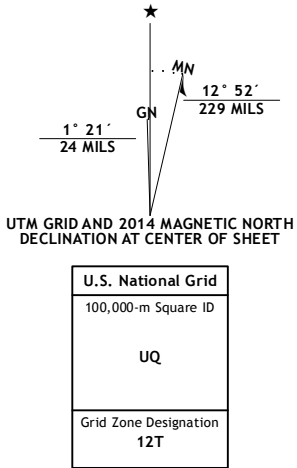
U.S. DEPARTMENT OF THE INTERIOR
U.S. GEOLOGICAL SURVEY



ISLAND BUTTE QUADRANGLE
MONTANA-BEAVERHEAD CO.
7.5-MINUTE SERIES



Produced by the United States Geological Survey
North American Datum of 1983 (NAD83)
World Geodetic System of 1984 (WGS84). Projection and
1 000-meter grid: Universal Transverse Mercator, Zone 12T
10 000-foot ticks: Montana Coordinate System of 1983
This map is not a legal document. Boundaries may be
generalized for this map scale. Private lands within government
reservations may not be shown. Obtain permission before
entering private lands.
Imagery.....NAIP, August 2011
Roads.....HERE, ©2013
Roads within US Forest Service Lands.....FSTopo Data
with limited Forest Service updates, 2013
Names.....GNIS, 2013
Hydrography.....National Hydrography Dataset, 2011
Contours.....National Elevation Dataset, 2005
Boundaries.....Multiple sources; see metadata file 1972-2013
Public Land Survey System.....BLM, 2011



ROAD CLASSIFICATION	
Expressway	Local Connector
Secondary Hwy	Local Road
Ramp	4WD
Interstate Route	US Route
FS Primary Route	FS Passenger Route
	State Route
	Clearance Route

Check with local Forest Service unit
for current travel conditions and restrictions.

1	2	3
4	5	
6	7	8

ADJOINING QUADRANGLES

1 Teepee Mountain
2 Graphite Mountain
3 Dixon Mountain
4 Morrison Lake
5 Caboose Canyon
6 Cottonwood Creek
7 Eighteenmile Peak
8 Deadman Lake

ISLAND BUTTE, MT
2014

