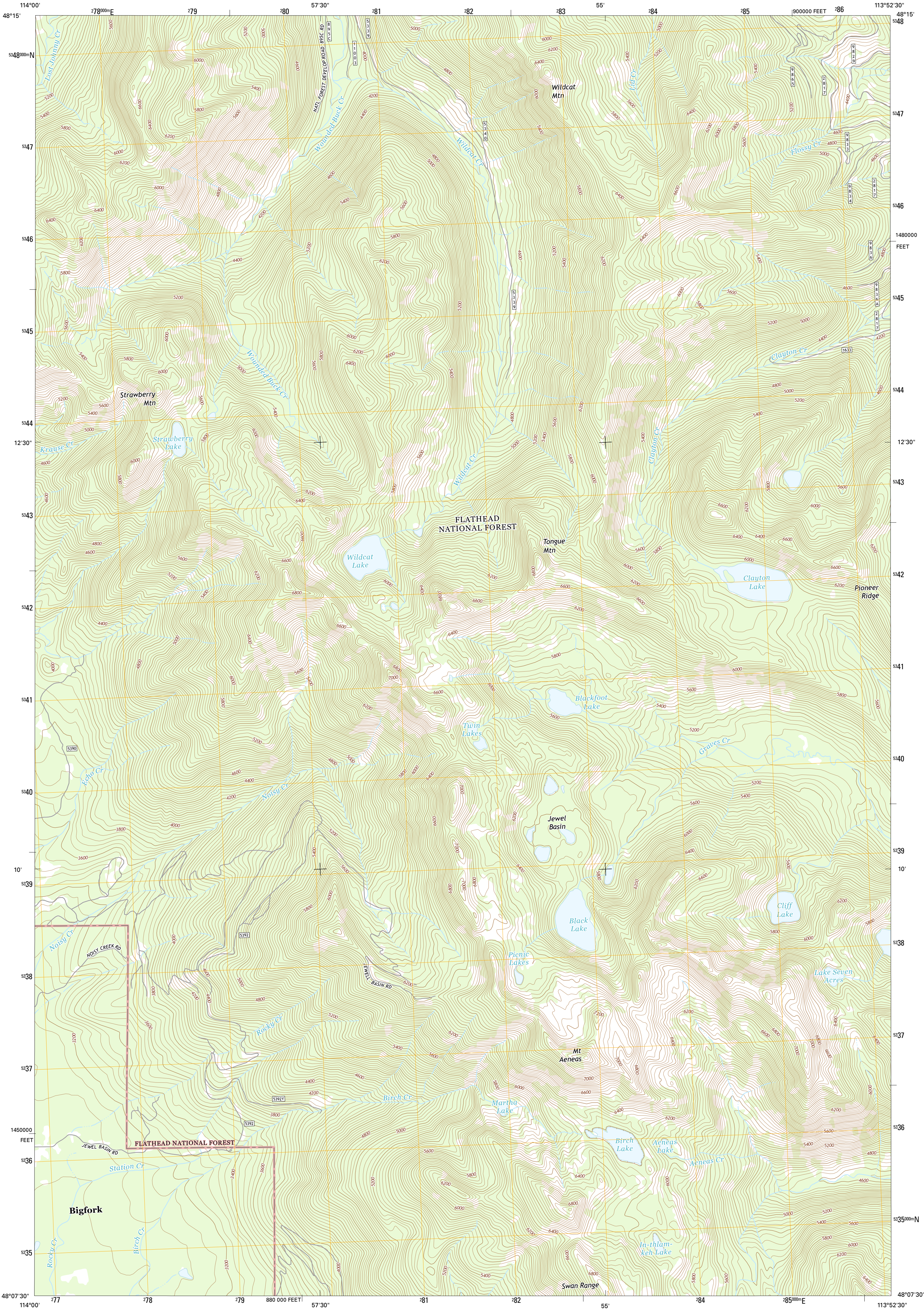




U.S. DEPARTMENT OF THE INTERIOR  
U.S. GEOLOGICAL SURVEY

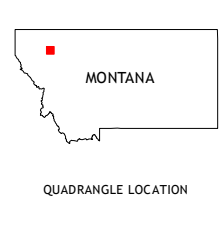
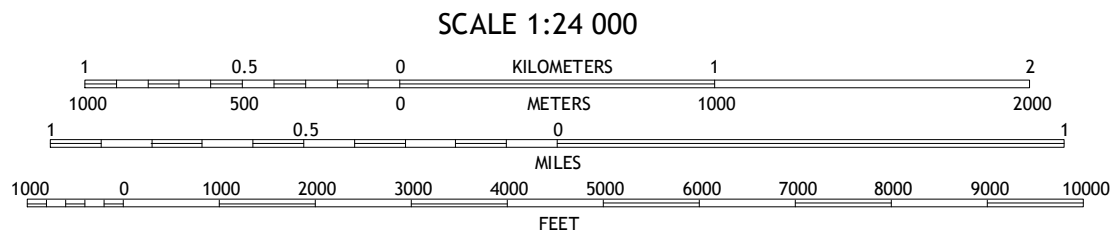
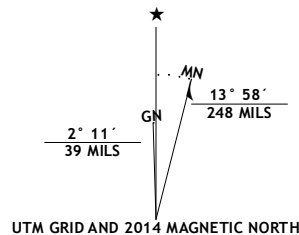


JEWEL BASIN QUADRANGLE  
MONTANA-FLATHEAD CO.  
7.5-MINUTE SERIES



Produced by the United States Geological Survey  
North American Datum of 1983 (NAD83)  
World Geodetic System of 1984 (WGS84). Projection and  
1 000-meter grid: Universal Transverse Mercator, Zone 12U  
10 000-foot ticks: Montana Coordinate System of 1983

This map is not a legal document. Boundaries may be  
generalized for this map scale. Private lands within government  
reservations may not be shown. Obtain permission before  
entering private lands.



ROAD CLASSIFICATION	
Expressway	Local Connector
Secondary Hwy	Local Road
Ramp	4WD
Interstate Route	US Route
FS Primary Route	FS Passenger Route
	State Route
	FS High Clearance Route

Check with local Forest Service unit  
for current travel conditions and restrictions.

Imagery.....NAIP, September 2011  
Roads.....HERE, ©2013  
Roads within US Forest Service Lands.....FSTopo Data  
with limited Forest Service updates, 2013  
Names.....GNIS, 2013  
Hydrography.....National Hydrography Dataset, 2011  
Contours.....National Elevation Dataset, 2001  
Boundaries.....Multiple sources; see metadata file 1972\_2013  
Public Land Survey System.....BLM, 2011

U.S. National Grid	
100,000-m Square ID	TU
Grid Zone Designation	12U

CONTOUR INTERVAL 40 FEET  
NORTH AMERICAN VERTICAL DATUM OF 1988

This map was produced to conform with the  
National Geospatial Program US Topo Product Standard, 2011.  
A metadata file associated with this product is draft version 0.6.16

1	2	3	1 Doris Mountain
4	5	2 Nyack SW	3 Mount Grant
6	7	8	4 Hash Mountain
			5 Pioneer Ridge
			6 Bigfork
			7 Crater Lake
			8 Big Hawk Mountain

JEWEL BASIN, MT  
2014

