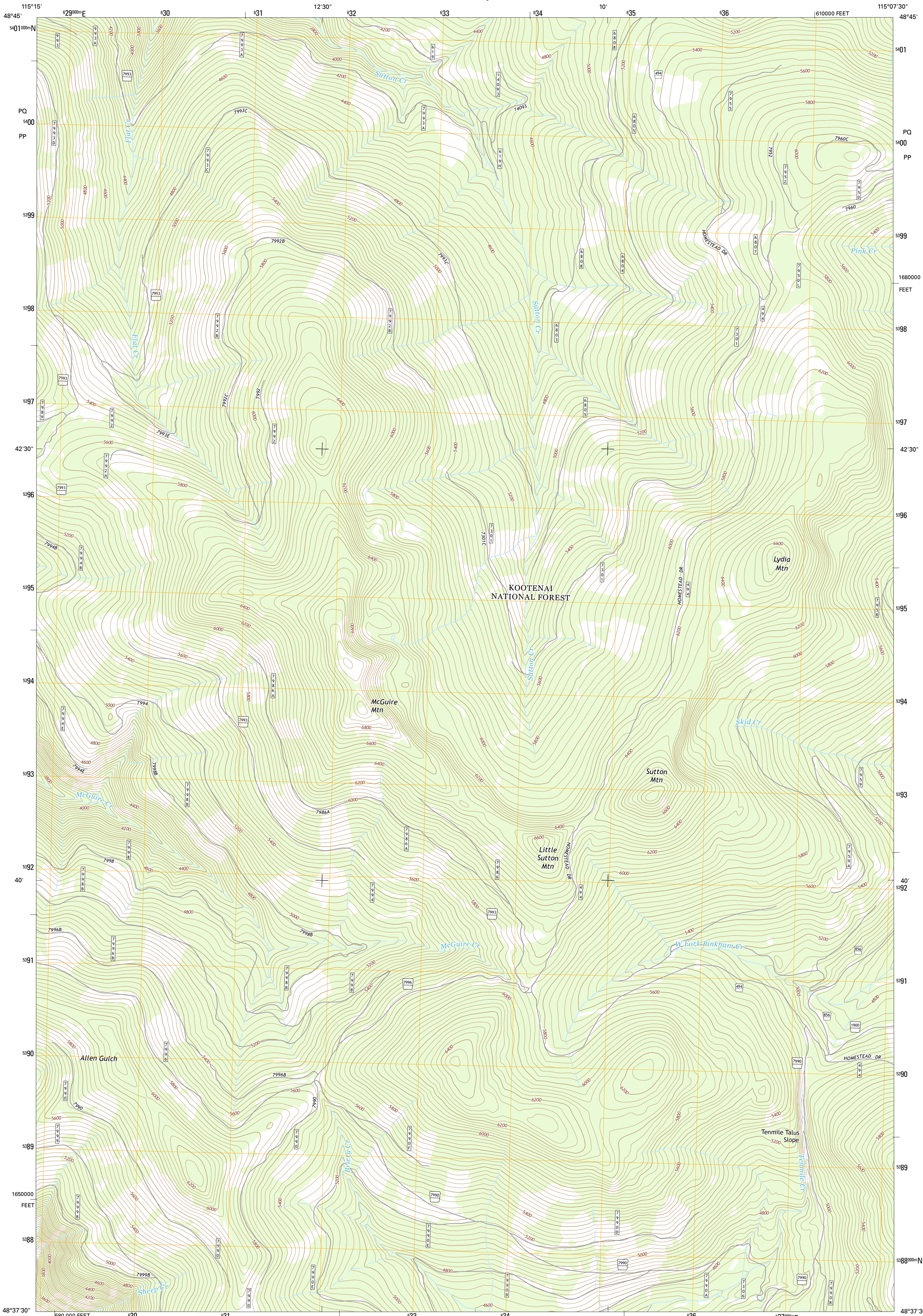




U.S. DEPARTMENT OF THE INTERIOR
U.S. GEOLOGICAL SURVEY



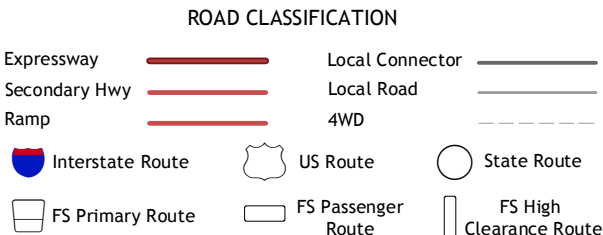
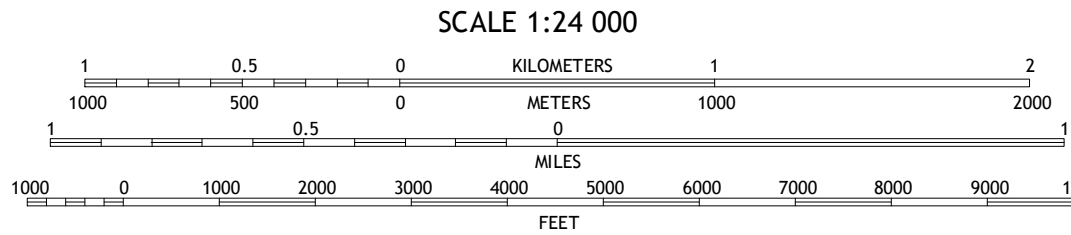
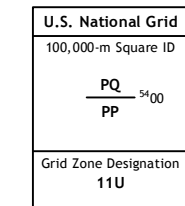
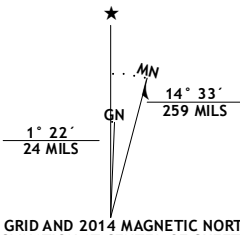
MC GUIRE MOUNTAIN QUADRANGLE
MONTANA-LINCOLN CO.
7.5-MINUTE SERIES



Produced by the United States Geological Survey
North American Datum of 1983 (NAD83)
World Geodetic System of 1984 (WGS84). Projection and
1 000-meter grid: Universal Transverse Mercator, Zone 11U
10 000-foot ticks: Montana Coordinate System of 1983

This map is not a legal document. Boundaries may be
generalized for this map scale. Private lands within government
reservations may not be shown. Obtain permission before
entering private lands.

Imagery.....NAIP, August 2011
Roads.....HERE, ©2013
Roads within US Forest Service Lands.....FS Topo Data
with limited Forest Service updates, 2013
Names.....GNS, 2013
Hydrography.....National Hydrography Dataset, 2011
Contours.....National Elevation Dataset, 2006
Boundaries.....Multiple sources; see metadata file 1972_2013
Public Land Survey System.....BLM, 2011



Check with local Forest Service unit
for current travel conditions and restrictions.

1	2	3
4	5	
6	7	8

ADJOINING QUADRANGLES

1 Webb Mountain
2 Beartrap Mountain
3 Eureka South
4 Inch Mountain
5 Pinkham Mountain
6 Ural Creek
7 Volcure Gulch
8 Davis Mountain

MC GUIRE MOUNTAIN, MT
2014

