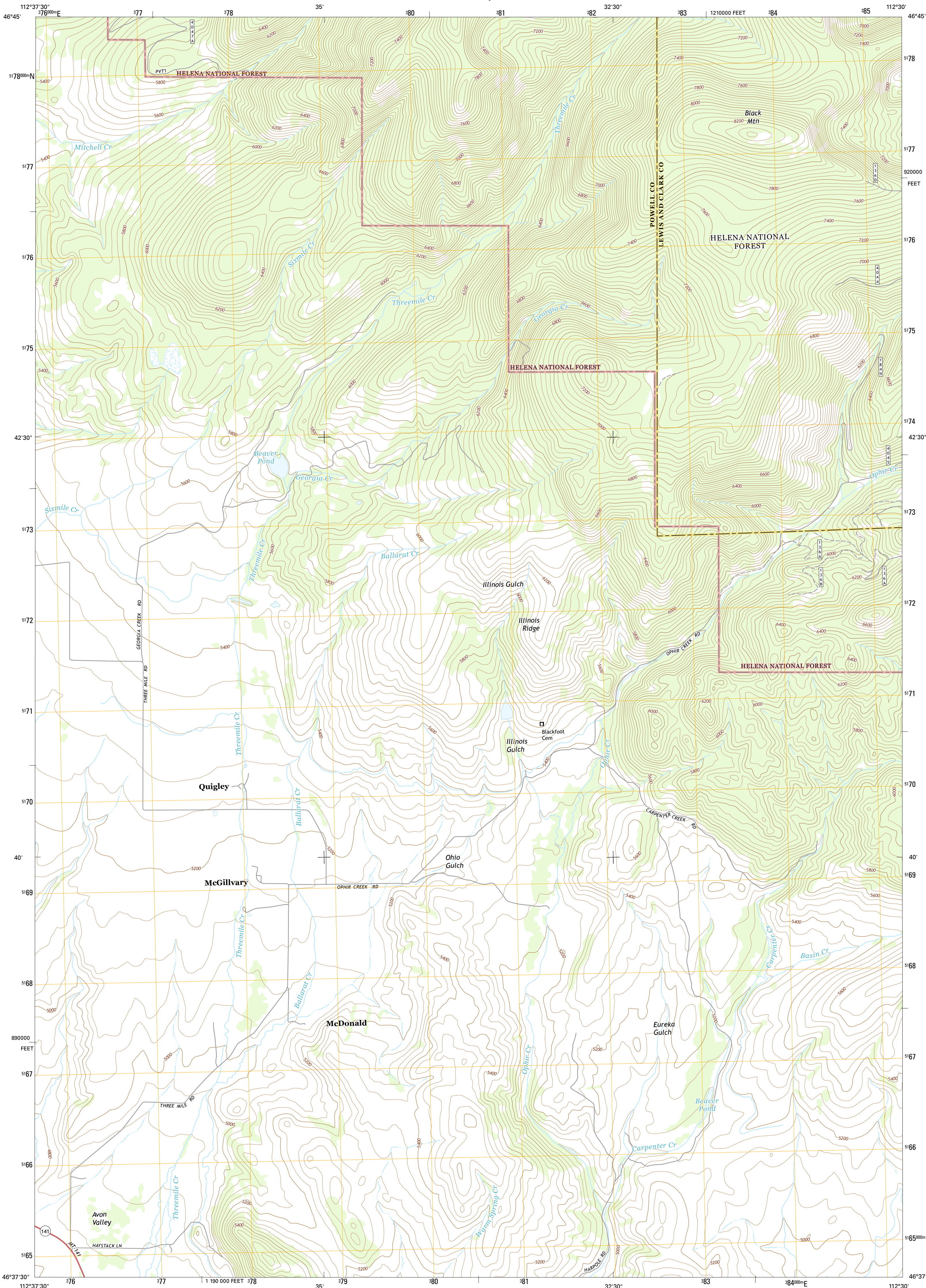




U.S. DEPARTMENT OF THE INTERIOR  
U.S. GEOLOGICAL SURVEY



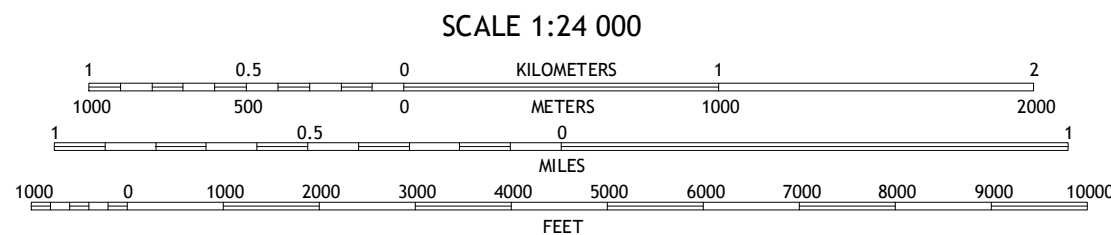
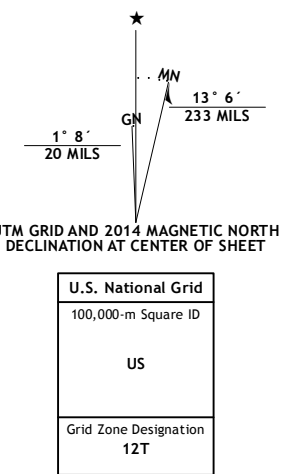
OPHIR CREEK QUADRANGLE  
MONTANA  
7.5-MINUTE SERIES



Produced by the United States Geological Survey  
North American Datum of 1983 (NAD83)  
World Geodetic System of 1984 (WGS84). Projection and  
1 000-meter grid: Universal Transverse Mercator, Zone 12T  
10 000-foot ticks: Montana Coordinate System of 1983

This map is not a legal document. Boundaries may be  
generalized for this map scale. Private lands within government  
reservations may not be shown. Obtain permission before  
entering private lands.

Imagery:.....NAIP, August 2011  
Roads:.....HERE, ©2013  
Roads within US Forest Service Lands:  
with limited Forest Service updates, 2013  
Names:.....GNS, 2013  
Hydrography:.....National Hydrography Dataset, 2011  
Contours:.....National Elevation Dataset, 2001  
Boundaries:.....Multiple sources; see metadata file 1972-2013  
Public Land Survey System:.....BLM, 2011



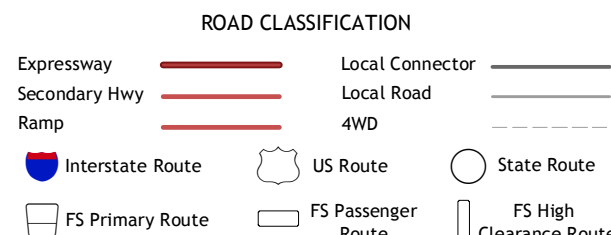
CONTOUR INTERVAL 40 FEET  
NORTH AMERICAN VERTICAL DATUM OF 1988

This map was produced to conform with the  
National Geospatial Program US Topo Product Standard, 2011.  
A metadata file associated with this product is draft version 0.6.16

1	2	3
4	5	6
7	8	9

ADJOINING QUADRANGLES

- 1 Finn
- 2 Nevada Mountain
- 3 Granite Butte
- 4 Gravelly Mountain
- 5 Emerald Hill
- 6 Luke Mountain
- 7 Avon
- 8 Elliston



Check with local Forest Service unit  
for current travel conditions and restrictions.

OPHIR CREEK, MT  
2014

