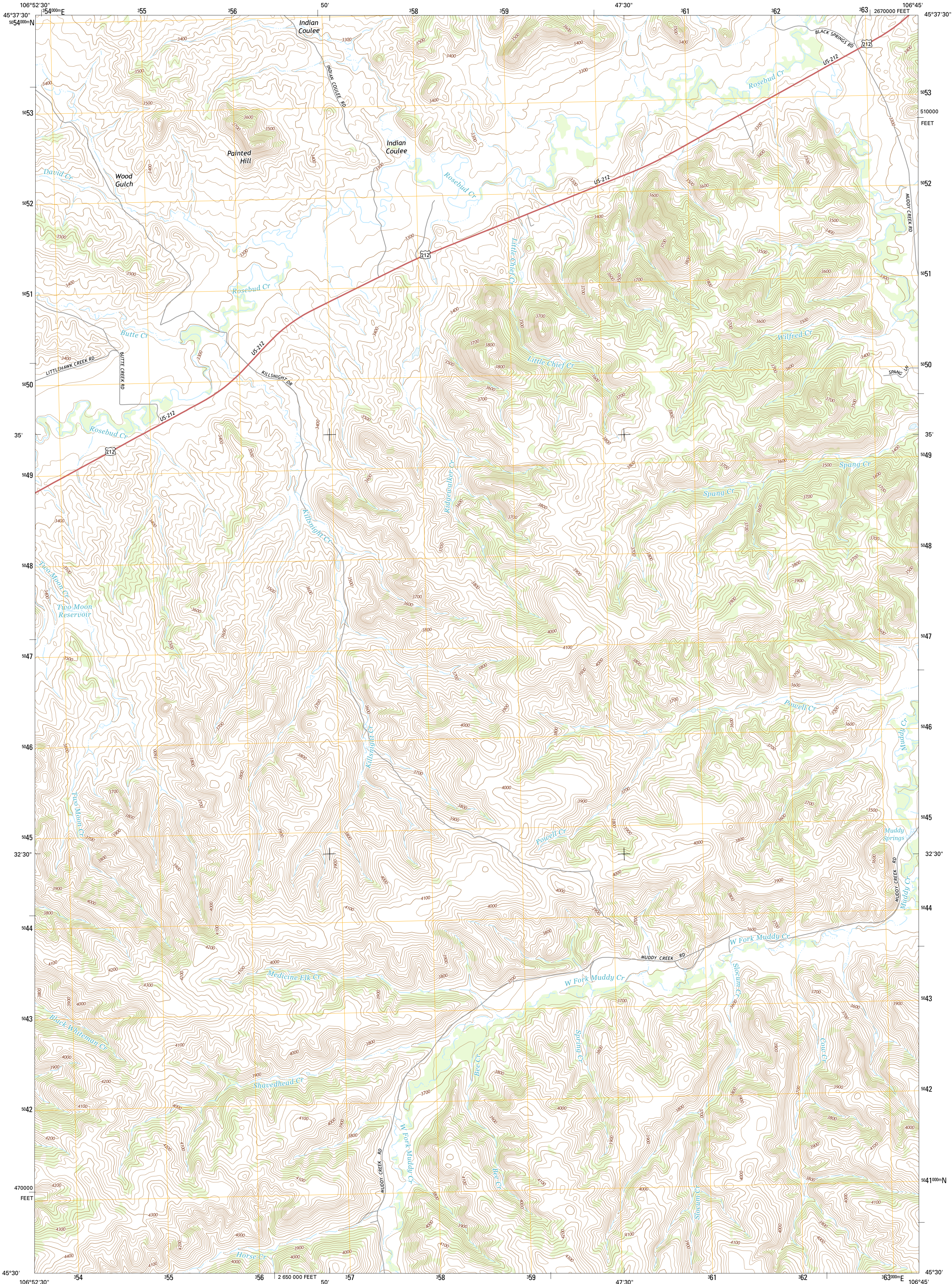




U.S. DEPARTMENT OF THE INTERIOR  
U.S. GEOLOGICAL SURVEY



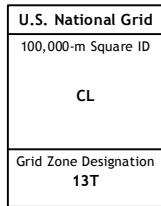
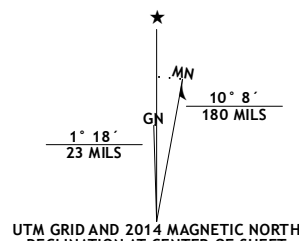
PAINTED HILL QUADRANGLE  
MONTANA-BIG HORN CO.  
7.5-MINUTE SERIES



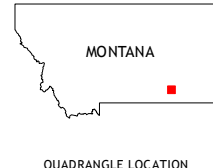
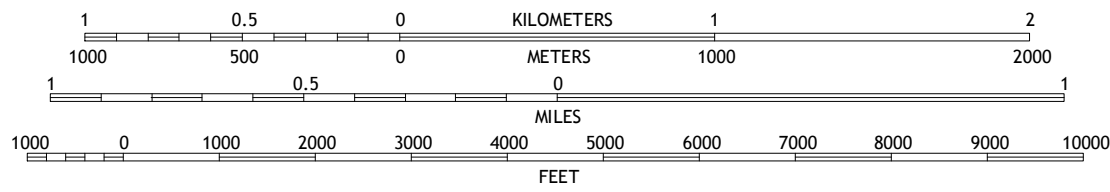
**Produced by the United States Geological Survey**  
North American Datum of 1983 (NAD83)  
World Geodetic System of 1984 (WGS84). Projection and  
1 000-meter grid; Universal Transverse Mercator, Zone 13T  
10 000-foot ticks; Montana Coordinate System of 1983

This map is not a legal document. Boundaries may be  
generalized for this map scale. Private lands within government  
reservations may not be shown. Obtain permission before  
entering private lands.

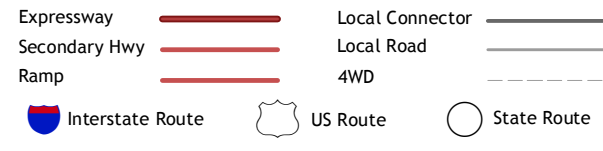
Imagery.....NAIP, July 2011  
Roads.....HERE, 2013  
Names.....GNIS, 2013  
Hydrography.....National Hydrography Dataset, 2011  
Contours.....National Elevation Dataset, 2009  
Boundaries.....Multiple sources; see metadata file 1972-2013  
Public Land Survey System.....BLM, 2011



SCALE 1:24 000



ROAD CLASSIFICATION



CONTOUR INTERVAL 20 FEET  
NORTH AMERICAN VERTICAL DATUM OF 1988

This map was produced to conform with the  
National Geospatial Program US Topo Product Standard, 2011.  
A metadata file associated with this product is draft version 0.6.16

1	2	3
4	5	6
7	8	9

- 1 Chalky Point
- 2 Black Spring
- 3 Jimtown
- 4 Baby
- 5 Lane Deer
- 6 Birdseye Spring
- 7 Bull Creek Lookout
- 8 Cook Creek Butte

PAINTED HILL, MT  
2014

