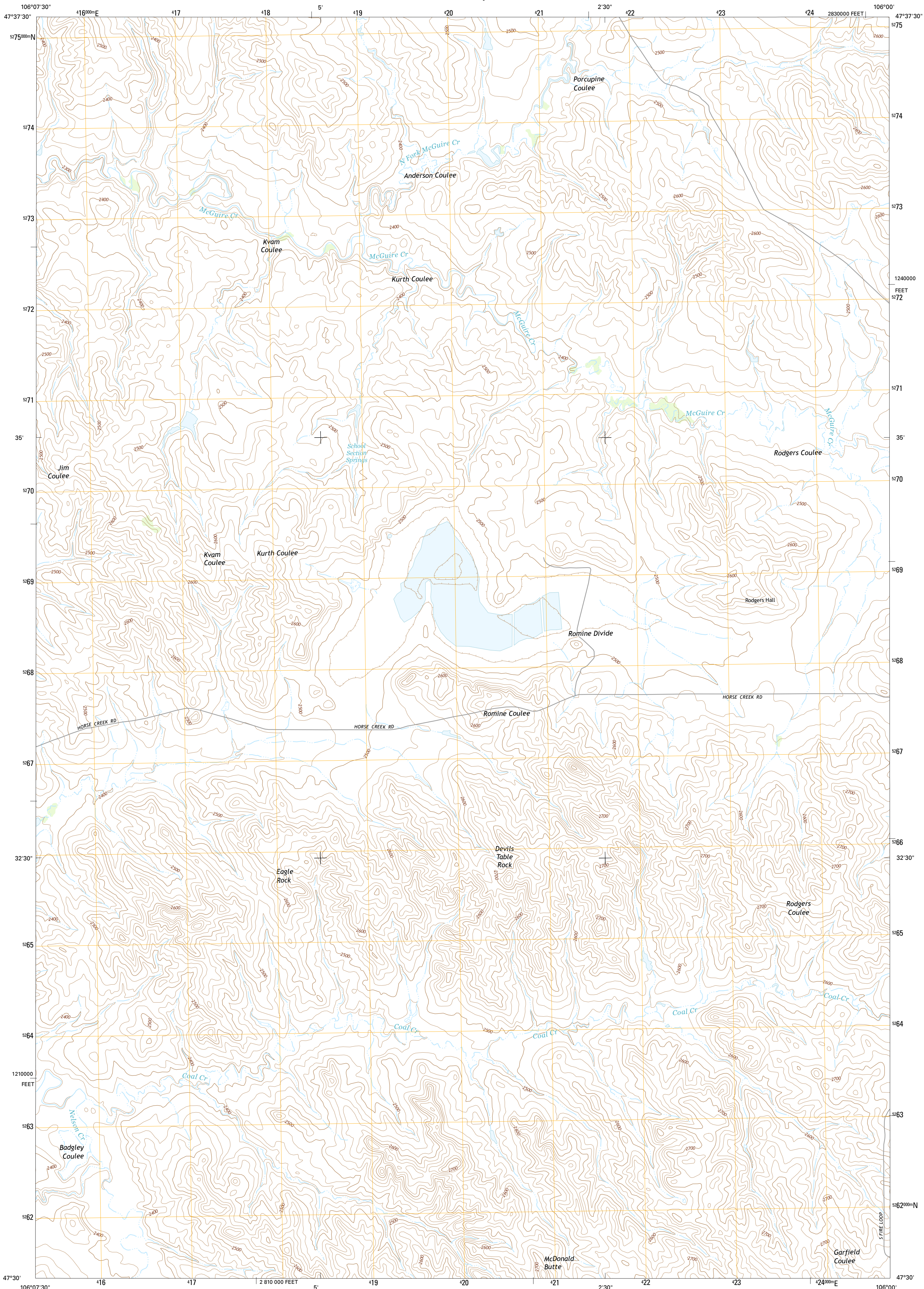




U.S. DEPARTMENT OF THE INTERIOR  
U.S. GEOLOGICAL SURVEY



RODGERS HALL QUADRANGLE  
MONTANA-MCCONE CO.  
7.5-MINUTE SERIES



**Produced by the United States Geological Survey**  
North American Datum of 1983 (NAD83)  
World Geodetic System of 1984 (WGS84). Projection and  
1 000-meter grid: Universal Transverse Mercator, Zone 13T  
10 000-foot ticks: Montana Coordinate System of 1983

This map is not a legal document. Boundaries may be  
generalized for this map scale. Private lands within government  
reservations may not be shown. Obtain permission before  
entering private lands.

Imagery.....NAIP.....July.....2011  
Roads.....HERE.....©2013  
Names.....GNIS.....2013  
Hydrography.....National Hydrography Dataset.....2011  
Contours.....National Elevation Dataset.....2002  
Boundaries.....Multiple sources; see metadata file 1972-2013  
Public Land Survey System.....BLM.....2011

U.S. National Grid
100,000-m Square ID
DN
Grid Zone Designation
13T

CONTOUR INTERVAL 20 FEET  
NORTH AMERICAN VERTICAL DATUM OF 1988

This map was produced to conform with the  
National Geospatial Program US Topo Product Standard, 2011.  
A metadata file associated with this product is draft version 0.6.16

1	2	3
4	5	6
7	8	9

1 Bug Creek  
2 Crow Springs  
3 Figure Eight Creek  
4 Nelson Creek Bay  
5 Weldon  
6 Fortyfour Coulee  
7 Johnson Coulee West  
8 Johnson Coulee East

RODGERS HALL, MT  
2014

