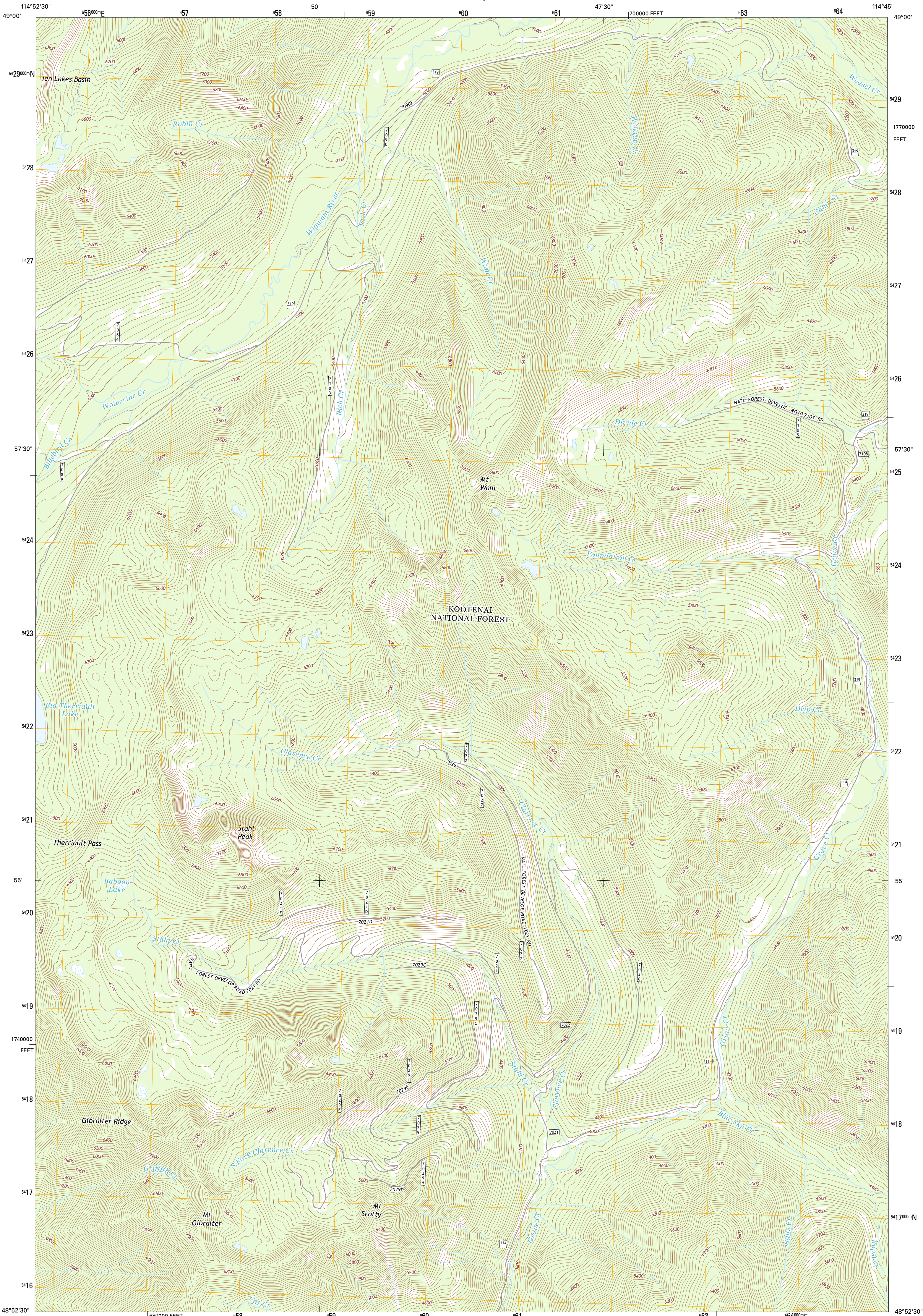




U.S. DEPARTMENT OF THE INTERIOR  
U.S. GEOLOGICAL SURVEY



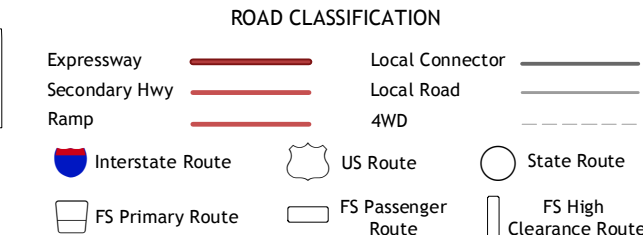
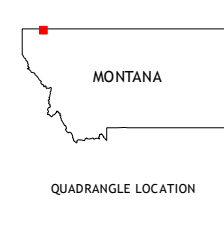
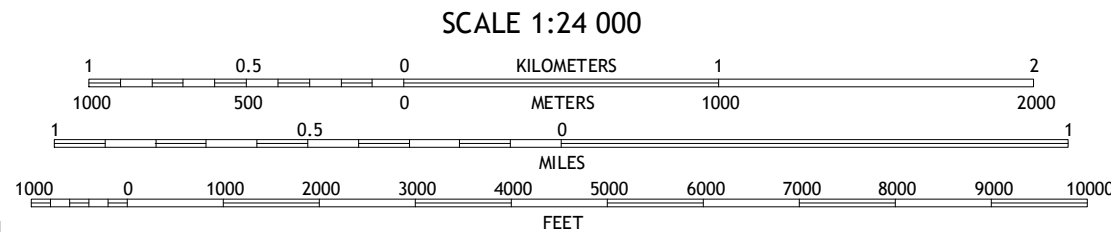
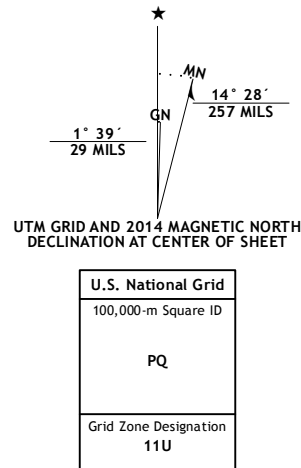
STAHL PEAK QUADRANGLE  
MONTANA-BRITISH COLUMBIA  
7.5-MINUTE SERIES



Produced by the United States Geological Survey  
North American Datum of 1983 (NAD83)  
World Geodetic System of 1984 (WGS84). Projection and  
1 000-meter grid; Universal Transverse Mercator, Zone 11U  
10 000-foot ticks; Montana Coordinate System of 1983

This map is not a legal document. Boundaries may be  
generalized for this map scale. Private lands within government  
reservations may not be shown. Obtain permission before  
entering private lands.

Imagery.....NAIP, August 2011  
Roads.....HERE, 2013  
Roads within US Forest Service Lands.....USFS Data  
with limited Forest Service updates, 2013  
Name.....GNIS, 2013  
Hydrography.....National Hydrography Dataset, 2011  
Contours.....National Elevation Dataset, 2001  
Boundaries.....Multiple sources; see metadata file 1972-2013  
Public Land Survey System.....BLM, 2011



Check with local Forest Service unit  
for current travel conditions and restrictions.

1	2	3
4	5	6
7	8	9

ADJOINING QUADRANGLES

1 Ksanka Peak OE N  
2 Stahl Peak OE N  
3 Tuchuck Mountain OE N  
4 Ksanka Peak  
5 Tuchuck Mountain  
6 Fortine  
7 Mount Marston  
8 Mount Thompson-Seton

STAHL PEAK, MT-BC  
2014

