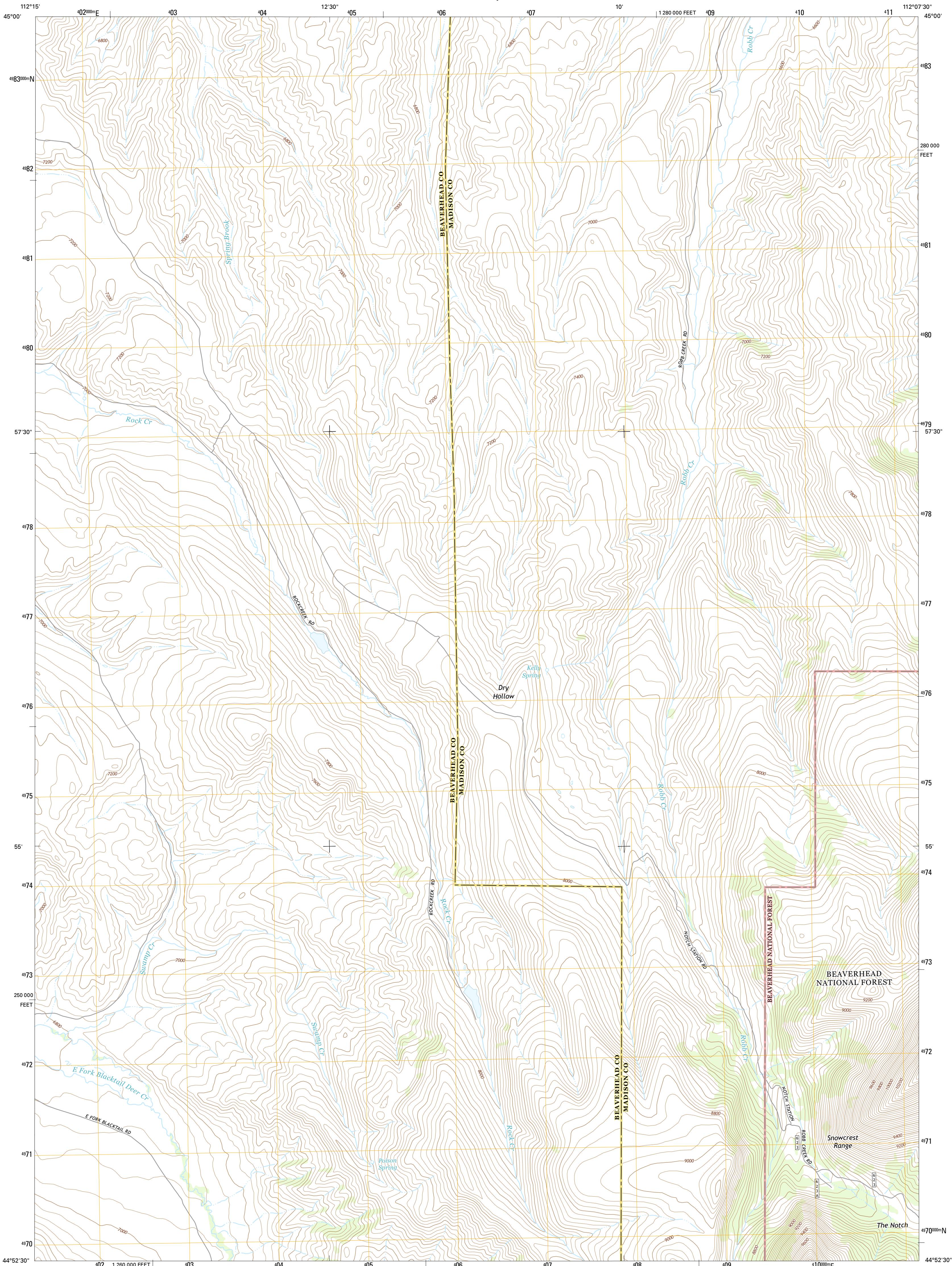




U.S. DEPARTMENT OF THE INTERIOR  
U.S. GEOLOGICAL SURVEY



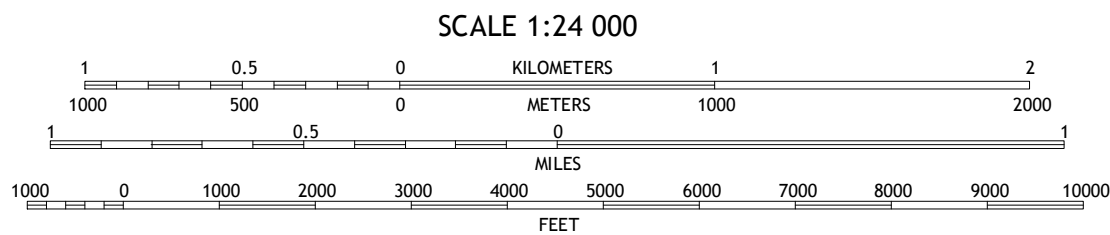
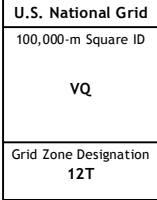
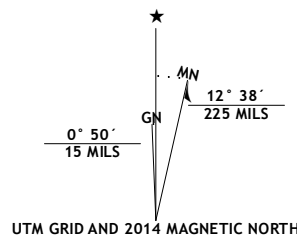
SWAMP CREEK QUADRANGLE  
MONTANA  
7.5-MINUTE SERIES



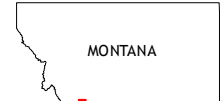
Produced by the United States Geological Survey  
North American Datum of 1983 (NAD83)  
World Geodetic System of 1984 (WGS84), Projection and  
1 000-meter grid: Universal Transverse Mercator, Zone 12T  
10 000-foot ticks: Montana Coordinate System of 1983

This map is not a legal document. Boundaries may be  
generalized for this map scale. Private lands within government  
reservations may not be shown. Obtain permission before  
entering private lands.

Imagery.....NAIP, August 2011  
Roads.....HERE, ©2013  
Roads within US Forest Service Lands.....FSTopo Data  
with limited Forest Service updates, 2013  
Names.....National Hydrography Dataset, 2011  
Hydrography.....National Elevation Dataset, 2001  
Contours.....Multiple sources; see metadata file 1972 - 2013  
Boundaries.....BLM, 2011



CONTOUR INTERVAL 40 FEET  
NORTH AMERICAN VERTICAL DATUM OF 1988  
This map was produced to conform with the  
National Geospatial Program US Topo Product Standard, 2011.  
A metadata file associated with this product is draft version 0.6.16



QUADRANGLE LOCATION

ROAD CLASSIFICATION			
Expressway	Local Connector		
Secondary Hwy	Local Road		
Ramp	4WD		
Interstate Route	US Route	State Route	
FS Primary Route	FS Passenger Route	FS High Clearance Route	

Check with local Forest Service unit  
for current travel conditions and restrictions.

1	2	3
4	5	6
7	8	

ADJOINING QUADRANGLES

- 1 Red Canyon
- 2 Belmont Park Ranch
- 3 Home Park Ranch
- 4 Price Creek NE
- 5 Spur Mountain
- 6 Whiskey Spring
- 7 Antone Peak
- 8 Stonehouse Mountain

SWAMP CREEK, MT  
2014

