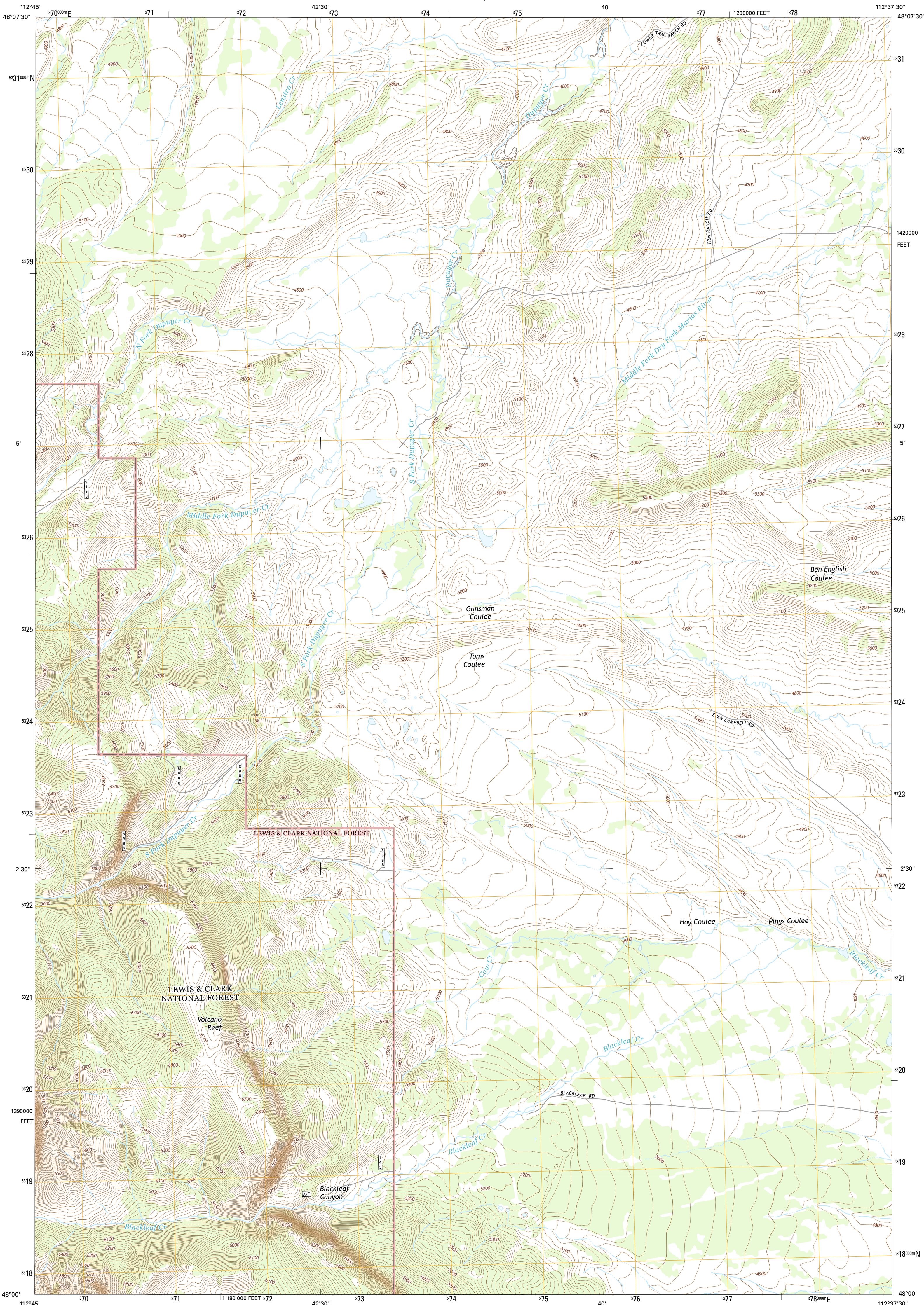




U.S. DEPARTMENT OF THE INTERIOR  
U.S. GEOLOGICAL SURVEY



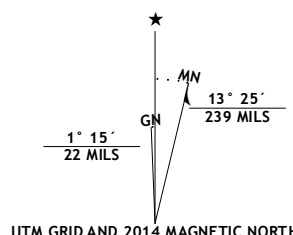
VOLCANO REEF QUADRANGLE  
MONTANA-TETON CO.  
7.5-MINUTE SERIES



Produced by the United States Geological Survey  
North American Datum of 1983 (NAD83)  
World Geodetic System of 1984 (WGS84). Projection and  
1 000-meter grid: Universal Transverse Mercator, Zone 12U  
10 000-foot ticks: Montana Coordinate System of 1983

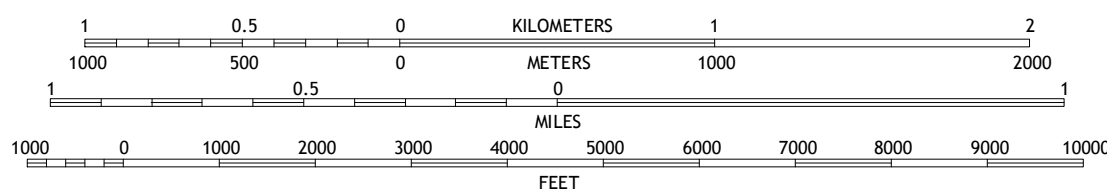
This map is not a legal document. Boundaries may be  
generalized for this map scale. Private lands within government  
reservations may not be shown. Obtain permission before  
entering private lands.

Imagery.....NAIP, August 2011  
Roads.....HERC, ©2013  
Roads within US Forest Service Lands.....FSTopo Data  
with limited Forest Service updates, 2013  
Names.....GNIS, 2013  
Hydrography.....National Hydrography Dataset, 2011  
Contours.....National Elevation Dataset, 2006  
Boundaries.....Multiple sources; see metadata file 1972 - 2013  
Public Land Survey System.....BLM, 2011



U.S. National Grid
100,000-in Square ID
UU
Grid Zone Designation
12U

SCALE 1:24 000



QUADRANGLE LOCATION

ROAD CLASSIFICATION	
Expressway	Local Connector
Secondary Hwy	Local Road
Ramp	4WD
Interstate Route	US Route
FS Primary Route	FS Passenger Route
	State Route
	FS High Clearance Route

Check with local Forest Service unit  
for current travel conditions and restrictions.

VOLCANO REEF, MT  
2014

1	2	3
4	5	6
7	8	9

1 Fish Lake  
2 Scoffin Butte  
3 Dupuyer West  
4 Walling Reef  
5 Blackleaf  
6 Mount Wright  
7 Cave Mountain  
8 Twin Lakes

