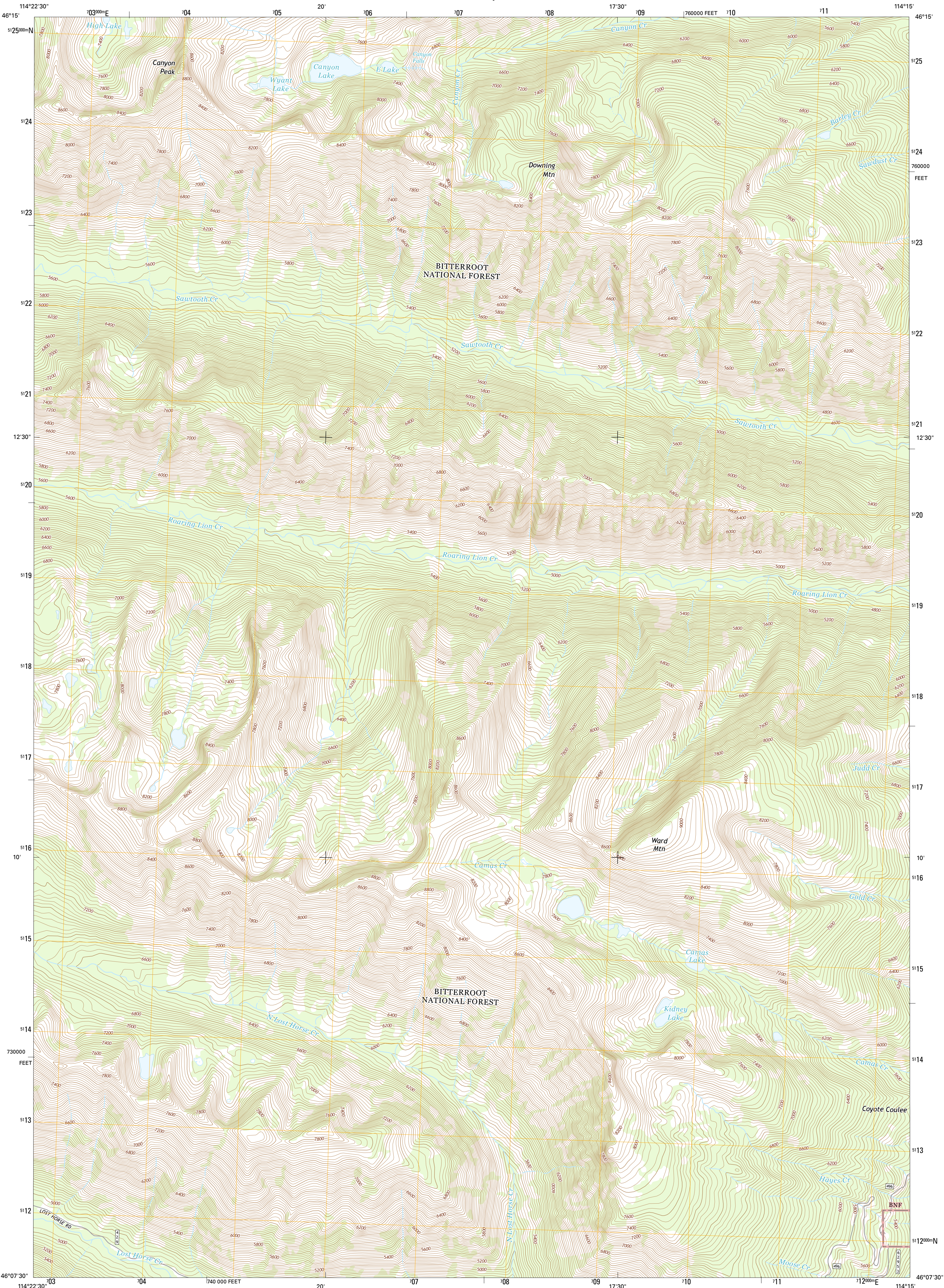




U.S. DEPARTMENT OF THE INTERIOR
U.S. GEOLOGICAL SURVEY



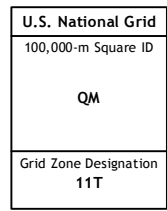
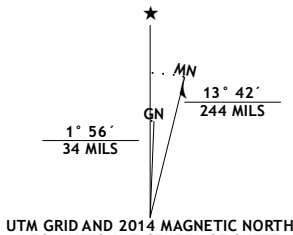
WARD MOUNTAIN QUADRANGLE
MONTANA-RAVALLI CO.
7.5-MINUTE SERIES



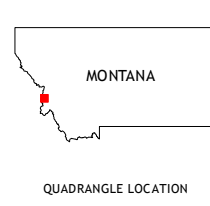
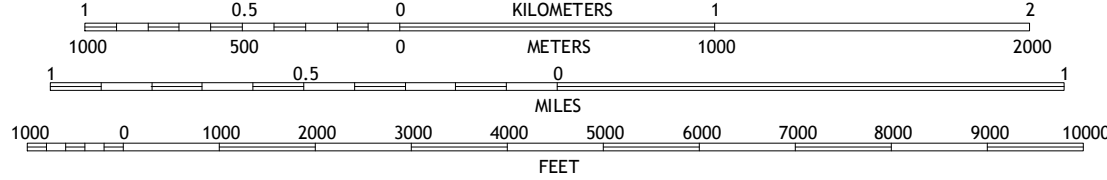
Produced by the United States Geological Survey
North American Datum of 1983 (NAD83)
World Geodetic System of 1984 (WGS84). Projection and
1 000-meter grid: Universal Transverse Mercator, Zone 11T
10 000-foot ticks: Montana Coordinate System of 1983

This map is not a legal document. Boundaries may be
generalized for this map scale. Private lands within government
reservations may not be shown. Obtain permission before
entering private lands.

Imagery.....N.A.P., August 2011
Roads.....HERE, ©2013
Roads within US Forest Service Lands.....FS Topo Data
with limited Forest Service updates, 2013
Names.....G.N.S., 2013
Hydrography.....National Hydrography Dataset, 2011
Contours.....National Elevation Dataset, 2004
Boundaries.....Multiple sources; see metadata file 1972 - 2013
Public Land Survey System.....BLM, 2011



SCALE 1:24 000



QUADRANGLE LOCATION

CONTOUR INTERVAL 40 FEET
NORTH AMERICAN VERTICAL DATUM OF 1988
This map was produced to conform with the
National Geospatial Program US Topo Product Standard, 2011.
A metadata file associated with this product is draft version 0.6.16

1	2	3	1 Blodgett Mountain
4	5	2 Printz Ridge	
6	7	3 Hamilton North	
		4 Tenmile Lake	
		5 Hamilton South	
		6 El Capitan	
		7 Como Peaks	
		8 Darby	

ROAD CLASSIFICATION		
Expressway	Local Connector	
Secondary Hwy	Local Road	
Ramp	4WD	
Interstate Route	US Route	State Route
FS Primary Route	FS Passenger Route	FS High Clearance Route

Check with local Forest Service unit
for current travel conditions and restrictions.

WARD MOUNTAIN, MT
2014

